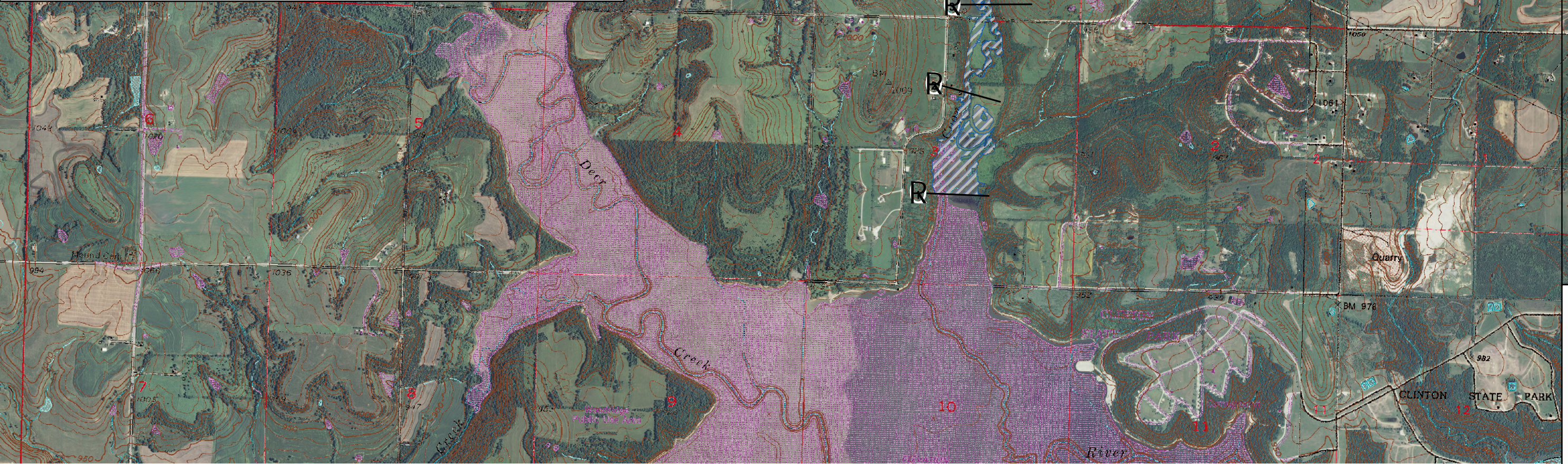
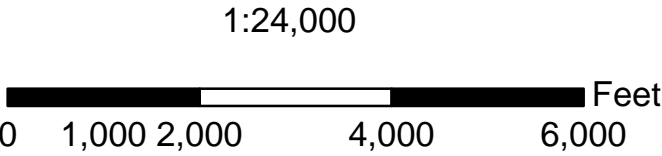


Section	HECRAS Station	Distance Downstream of Dam, ft	Max. Elev of Breach Flood	Elevation of Stream bed	Travel Time, hrs	Flow at Section @ Peak Elev	Flow Top Width at Section @ Peak Elev	Avg. Velocity at Section, ft/sec
CL Dam	DDG- 0238_1_2113	0	1001.1	991.1	0.2	19,011	299	11.6
16	DDG- 0238_1_1656	457	988.5	975.6	0.2	17,803	155	15.0
15	DDG- 0238_1_1048	1,066	977.2	963.7	0.2	17,385	198	10.5
14	DDG- 0238_1_614	1,499	970.9	959.4	0.2	17,009	198	14.2
13	Coon Creek_3_15476	2,113	959.5	948.9	0.3	15,311	478	7.9
12	Coon Creek_3_13947	3,642	953.2	940.6	0.3	13,042	424	5.8
11	Coon Creek_3_13234	4,356	947.9	939.3	0.3	12,356	390	7.0
10	Coon Creek_2_12440	5,149	939.2	927.9	0.3	10,905	461	6.9
9	Coon Creek_2_12100	5,489	938.5	922.5	0.3	10,078	510	2.8
8	Coon Creek_2_12008	5,581	937.0	923.9	0.4	10,984	69	17.4
7	Coon Creek_2_11897	5,693	934.0	922.2	0.4	10,680	438	5.2
6	Coon Creek_2_9634	7,955	915.0	904.1	0.4	8,666	509	4.7
5	Coon Creek_2_7872	9,717	907.5	894.2	0.5	7,014	624	4.0
4	Coon Creek_1_6669	10,921	902.1	887.3	0.7	5,067	483	3.2
3	Coon Creek_1_5439	12,150	897.9	883.4	0.7	4,756	303	5.4
2	Coon Creek_1_2258	15,331	886.8	875.8	0.8	4,485	126	5.2
1	Coon Creek_1_25	17,565	880.8	875.2	0.9	4,146	918	1.6
13_TRIB	DDG- 0196_1_15940	2,476	959.5	952.8	0.3	- 642	226	- 0.8
10_TRIB	DDG- 0146_1_1025	6,174	939.4	935.4	0.4	- 10	28	- 0.2
4_TRIB	DDG- 0032_1_566	11,486	902.1	900.4	0.7	1	25	0.0



\* Travel time is measured from the initiation of breach formation to the time the breach wave arrives at the section.

The inundation area was developed based on a breach with the water surface at the Top of Dam elevation. Cross Sections were developed using 2-meter LIDAR data.



Attachment 1:  
Inundation Area  
Boundary Map

REVISIONS		
DATE	APPROVED	TITLE

DDG-0238 NID-KS04084  
DOUGLAS COUNTY, KANSAS

Natural Resources Conservation Service  
United States Department of Agriculture

File Name

Drawing Name

07/01/2009  
Sheet 1 of 1

Designed  
EWR

Drawn  
DMM

Checked  
JW

Approved  
AGB

06/20/09

07/01/2009

06/20/09

06/20/09