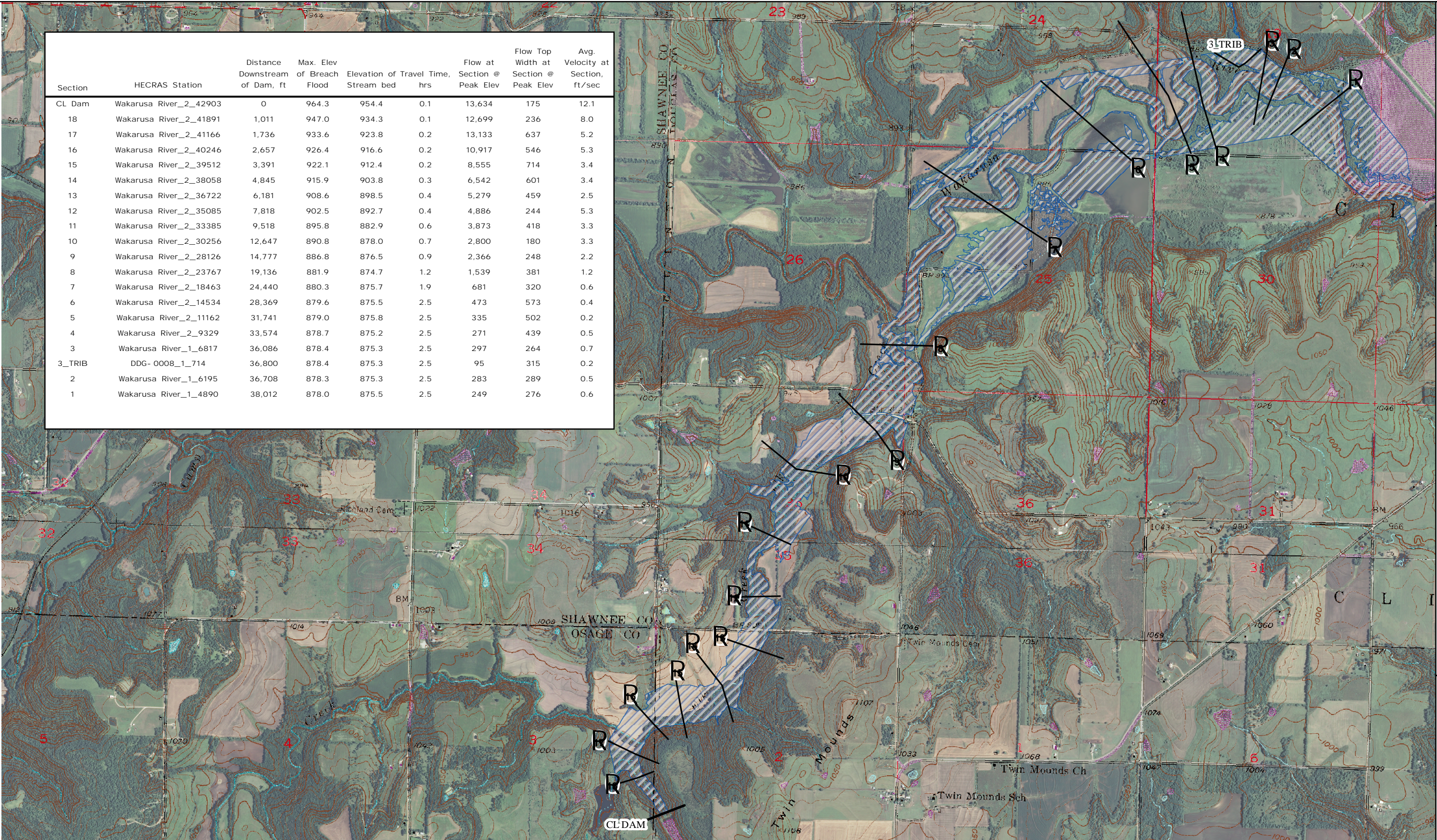
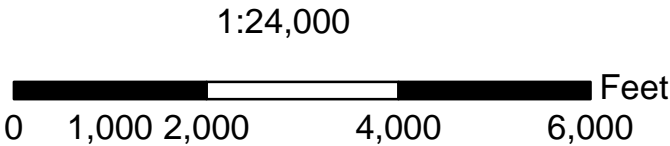


Section	HECRAS Station	Distance Downstream of Dam, ft	Max. Elev of Breach Flood	Elevation of Stream bed	Travel Time, hrs	Flow at Section @ Peak Elev	Flow Top Width at Section @ Peak Elev	Avg. Velocity at Section, ft/sec
CL Dam	Wakarusa River_2_42903	0	964.3	954.4	0.1	13,634	175	12.1
18	Wakarusa River_2_41891	1,011	947.0	934.3	0.1	12,699	236	8.0
17	Wakarusa River_2_41166	1,736	933.6	923.8	0.2	13,133	637	5.2
16	Wakarusa River_2_40246	2,657	926.4	916.6	0.2	10,917	546	5.3
15	Wakarusa River_2_39512	3,391	922.1	912.4	0.2	8,555	714	3.4
14	Wakarusa River_2_38058	4,845	915.9	903.8	0.3	6,542	601	3.4
13	Wakarusa River_2_36722	6,181	908.6	898.5	0.4	5,279	459	2.5
12	Wakarusa River_2_35085	7,818	902.5	892.7	0.4	4,886	244	5.3
11	Wakarusa River_2_33385	9,518	895.8	882.9	0.6	3,873	418	3.3
10	Wakarusa River_2_30256	12,647	890.8	878.0	0.7	2,800	180	3.3
9	Wakarusa River_2_28126	14,777	886.8	876.5	0.9	2,366	248	2.2
8	Wakarusa River_2_23767	19,136	881.9	874.7	1.2	1,539	381	1.2
7	Wakarusa River_2_18463	24,440	880.3	875.7	1.9	681	320	0.6
6	Wakarusa River_2_14534	28,369	879.6	875.5	2.5	473	573	0.4
5	Wakarusa River_2_11162	31,741	879.0	875.8	2.5	335	502	0.2
4	Wakarusa River_2_9329	33,574	878.7	875.2	2.5	271	439	0.5
3	Wakarusa River_1_6817	36,086	878.4	875.3	2.5	297	264	0.7
3_TRIB	DDG- 0008_1_714	36,800	878.4	875.3	2.5	95	315	0.2
2	Wakarusa River_1_6195	36,708	878.3	875.3	2.5	283	289	0.5
1	Wakarusa River_1_4890	38,012	878.0	875.5	2.5	249	276	0.6



* Travel time is measured from the initiation of breach formation to the time the breach wave arrives at the section.

The inundation area was developed based on a breach with the water surface at the Top of Dam elevation. Cross Sections were developed using 2-meter LIDAR data.



Attachment 1:
Inundation Area
Boundary Map

REVISIONS		
DATE	APPROVED	TITLE



DDG-0225 NID-KS04085
DOUGLAS COUNTY, KANSAS

Date	Designed	Drawn	Checked	Approved
06/2009	EWR	DMM	JW	AGB
07/2009				
08/2009				
09/2009				

File Name
Drawing Name
07/01/2009 Sheet 1 of 1