

The State of Kansas
GIS Policy Board's
Data Access and Support Center (DASC)
FY2016 Annual Report



Outline

Introduction 2
Organizational Chart 2
Funding 3
Database Archival and Distribution 4-6
Coordination & Promotion Activities 7-8
Additional Initiatives 9-23
Web Services 24
Map Server Statistics 25
Future Direction 26-27

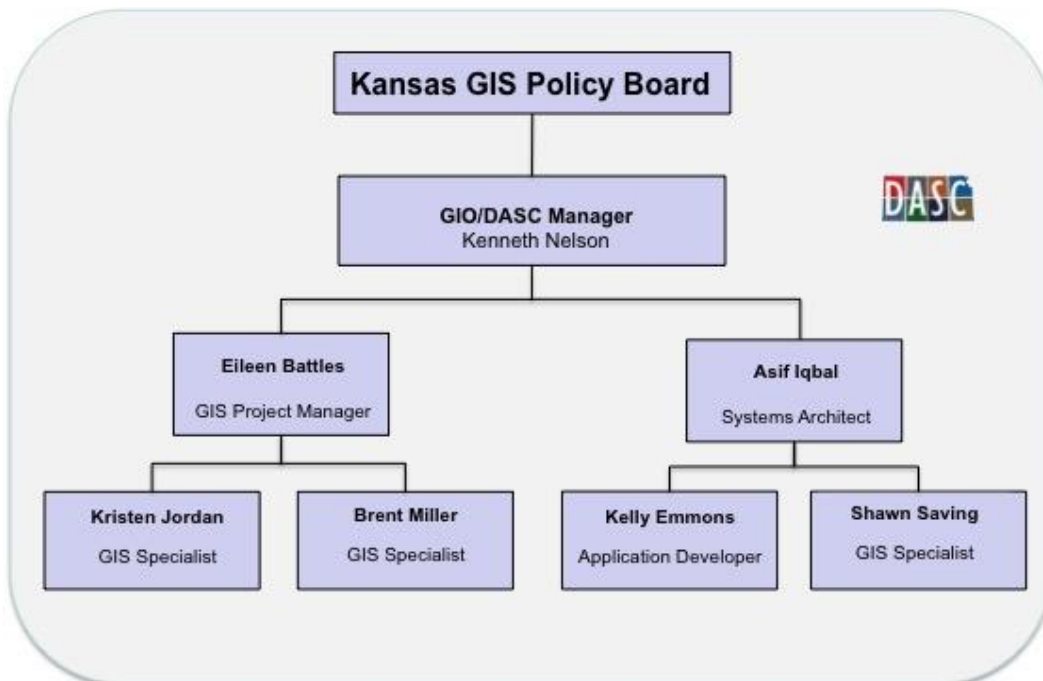
DASC is located at
University of Kansas
Kansas Geological Survey
1930 Constant Avenue
Lawrence, Kansas 66047
Tel: 785-864-2000 Fax: 785-864-5317
dasc@kgs.ku.edu
www.KansasGIS.org

INTRODUCTION

Since its inception in 1991, the Data Access & Support Center (DASC) has served as the State of Kansas Geographic Information System (GIS) data clearinghouse. Over the past 25 years, the geospatial technology industry has experienced tremendous growth and change. Once seen as a back-office technology used by a few experienced technicians, GIS is now integrated into a wide variety of applications and business processes. The availability of high-speed networks, web services, and geo-enabled mobile devices has highlighted the capability of geospatial technology and delivered it to a much wider audience.

Originally created as a center for the archiving and distribution of geospatial data, DASC has worked to expand its service portfolio over the years. While data archiving and distribution are still at the core of DASC's mission, DASC also provides a variety of geospatial services including web-based application development and hosting, database development and integration, state and local coordination, technical support, and local GIS data backup. These services support the Kansas GIS Initiative and complement state and local GIS activities.

Physically located at the Kansas Geological Survey, DASC serves at the pleasure of the Kansas GIS Policy Board and under the direction of the Kansas Geographic Information Officer. The following document provides a summary of DASC's services and initiatives during FY2016.



FUNDING

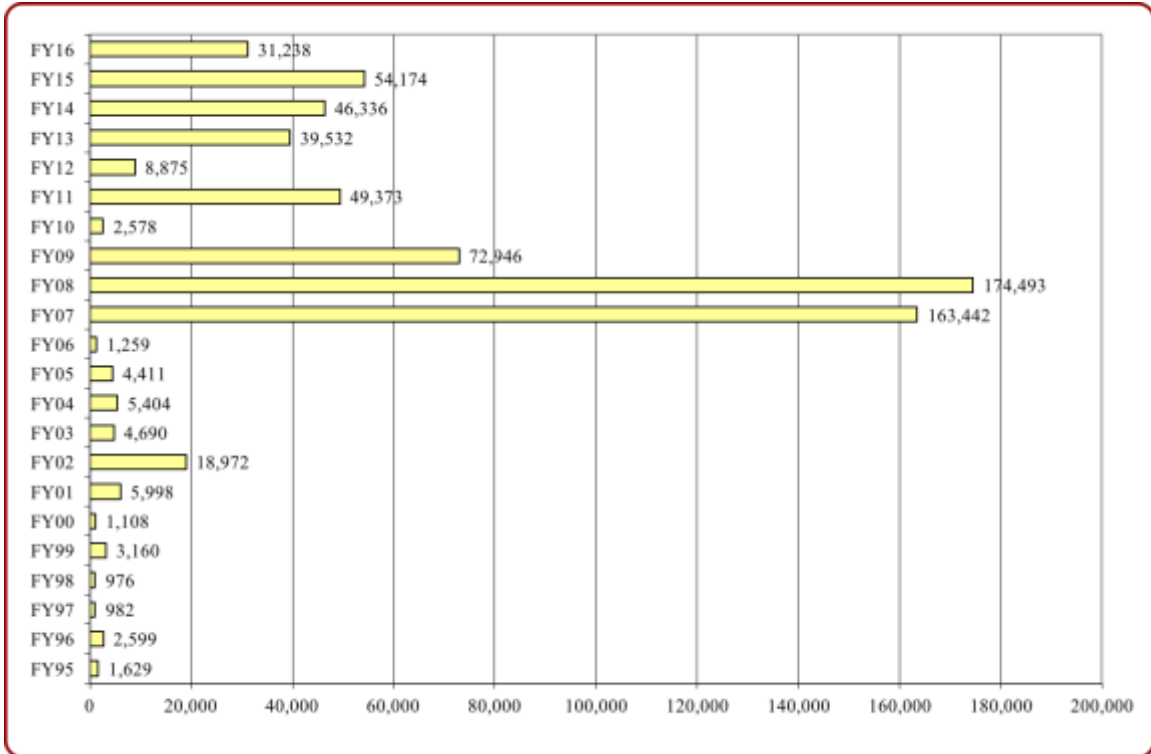
Historically, DASC has relied on three primary funding sources to support the variety of services it offers. These funding sources include the annual operational funding provided by the Kansas Office of Information Technology Services (OITS), in-kind support provided by the Kansas Geological Survey (KGS), and fee-for-service activities. Due to budget constraints, no operational budget support was provided by OITS for FY2015. In response to this situation, \$50,000 in funding was provided through the GIS Policy Board's Database Development program to help stabilize the clearinghouse operation during FY2015. Operational funding support in the amount of \$280,000 was restored for the DASC operation for FY2016.

In addition to the operational funding provided by OITS and the in-kind support provided by KGS, DASC also generates revenue through cost-recovery services. The revenue generated by these activities (sometimes referred to as "additional initiatives") broadens the scope of the DASC program, increases capacity to provide service, and helps cover IT-related expenses. Because additional initiatives do not follow set fiscal calendars, the most effective way to quantify the level of activity within any given state fiscal year (FY) is to calculate the total salary expenses for the entire DASC staff, not just those funded by the annual OITS budget. The total DASC staff expenses (gross salary+fringe benefits) for FY2016 exceeded \$600,000. This total staffing expense fluctuates annually depending on the amount of cost-recovery activity.

DATABASE ARCHIVAL AND DISTRIBUTION

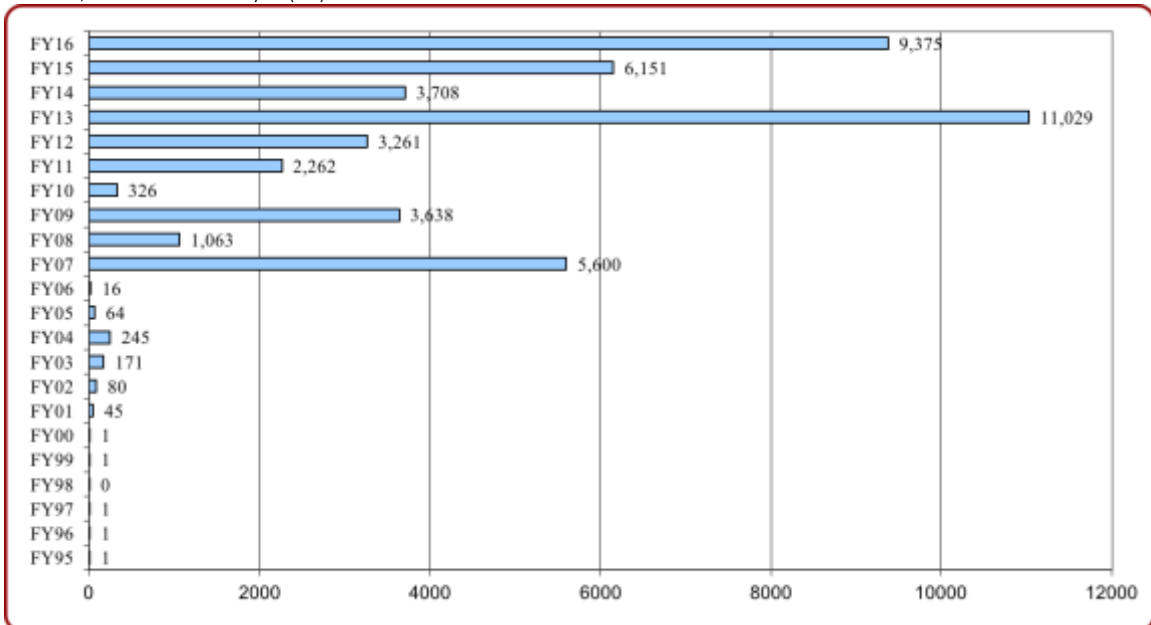
The following figures summarize database delivery, archival, and distribution activities.

Database Deliveries to DASC – Total number of files:

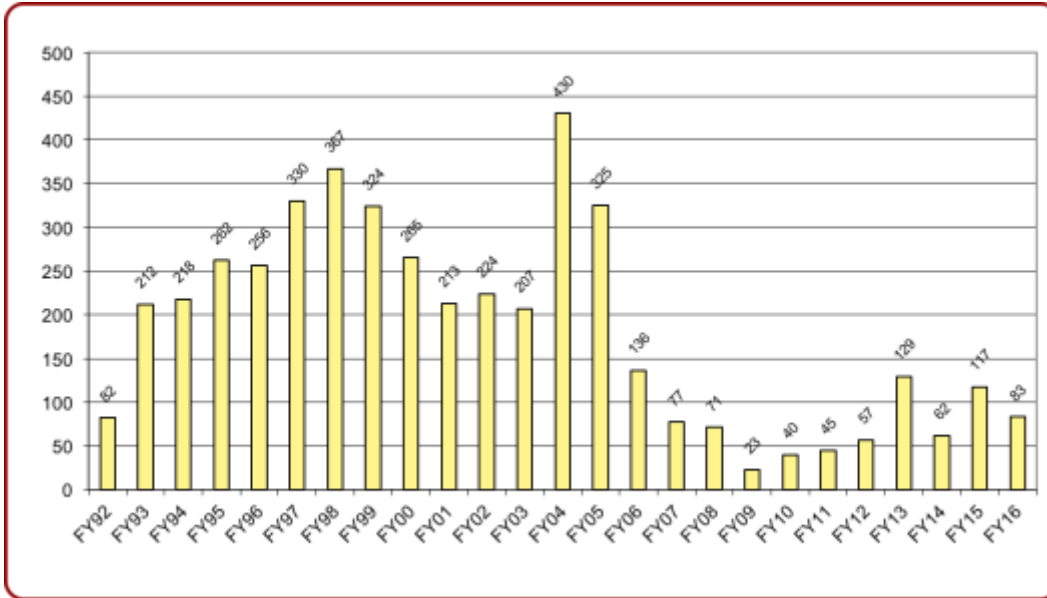


Database Deliveries to DASC – Total file size in Gigabytes (GB):

Note: 1,024 GB = 1 Terabyte (TB)

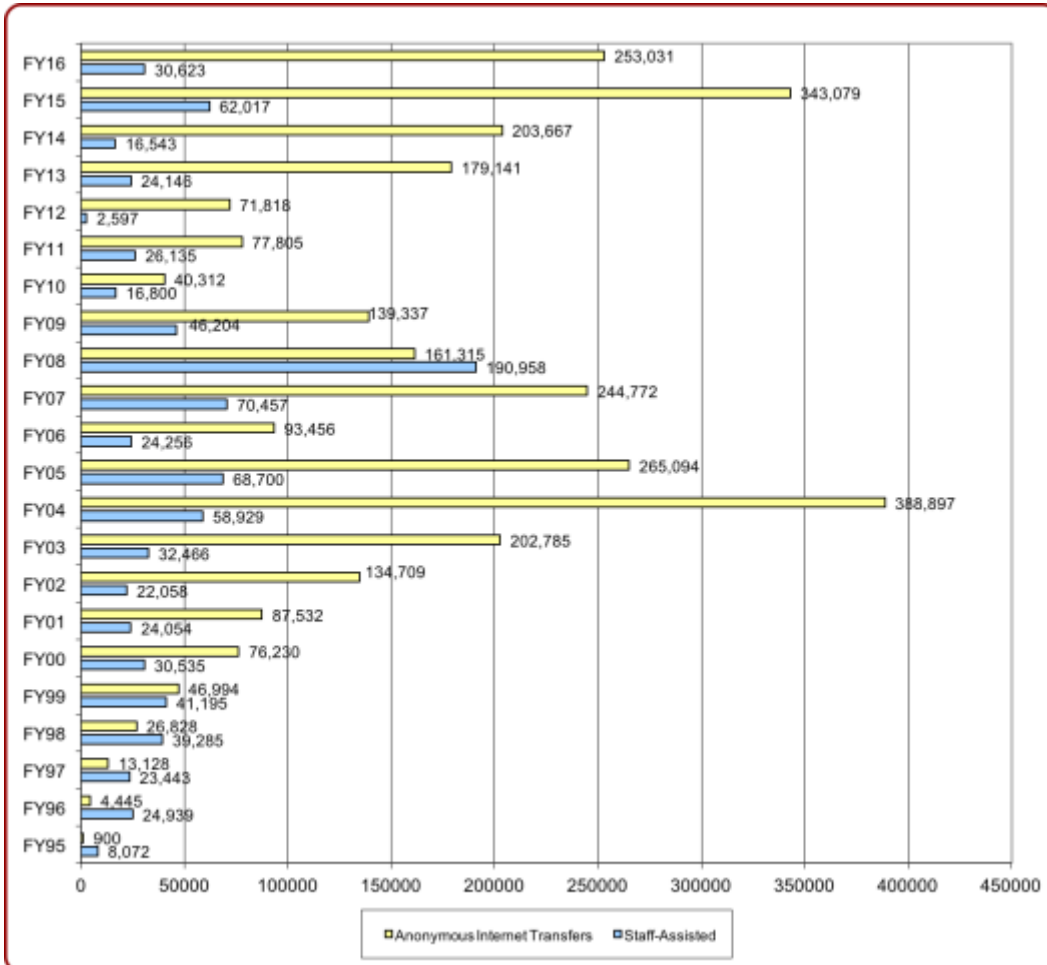


Staff Assisted Database Requests

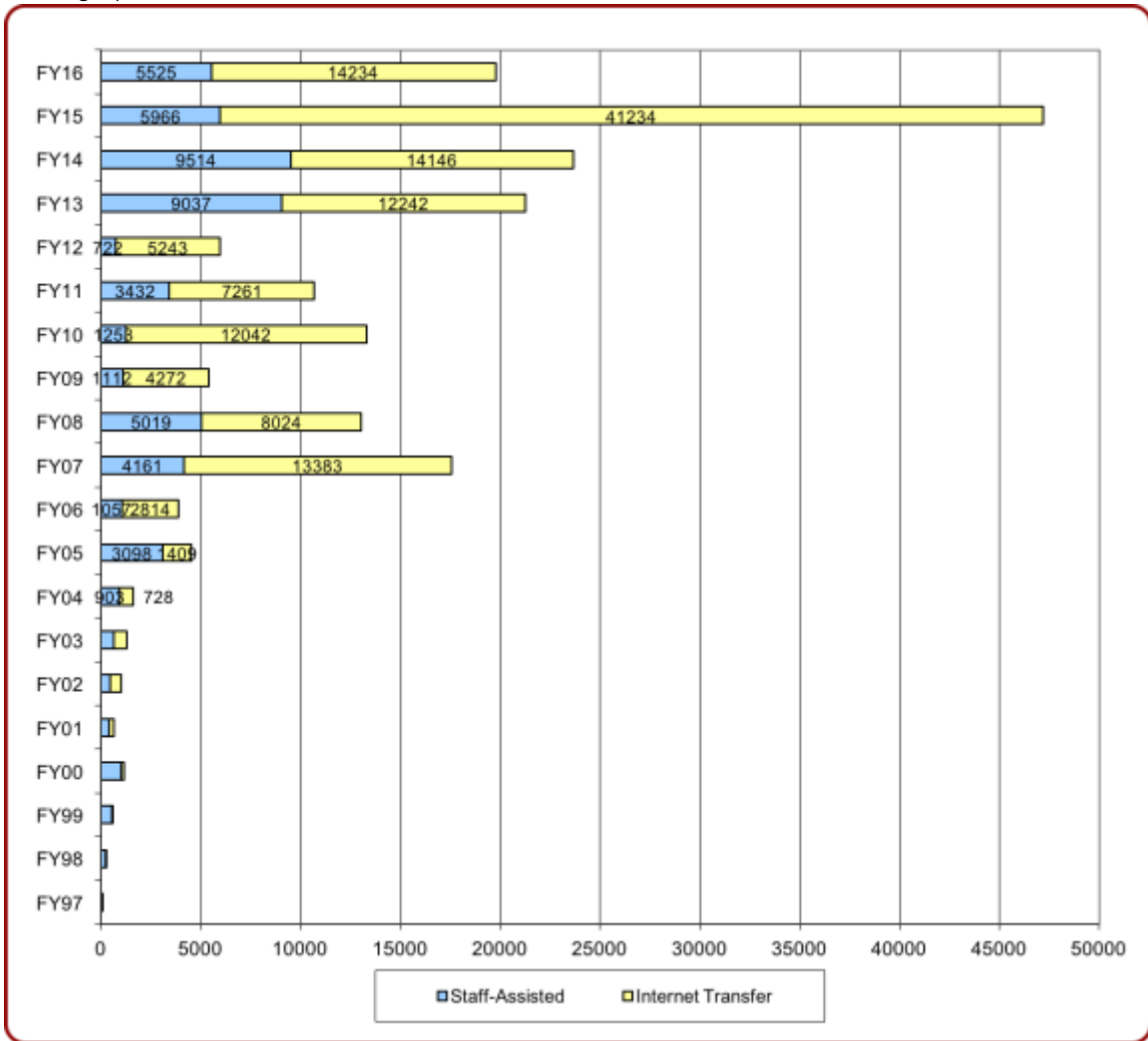


A staff-assisted request involves a customer contacting the DASC office and requesting additional file handling/processing over and above what is available free-of-charge from the DASC web site.

Total Files Distributed



Total Gigabytes Distributed



COORDINATION & PROMOTION ACTIVITIES

In addition to the events listed below, DASC staff continued the tradition of serving on GIS-related committees throughout the year. Serving in this capacity not only provides professional development opportunities for staff members, but also helps to establish and maintain relationships with the Kansas GIS community:

- Kansas Association of Mappers – 2015-2016 President & website administrator
- MidAmerica GIS Consortium (MAGIC):
 - 2015-16 Steering Committee member
 - 2015 Clearinghouse Summit – Planning Committee Chair
- ArcGIS User’s Group – group coordination
- Elevation & Imagery Data Committee
- National States Geographic Information Council (NSGIC) State Representative
- Next Generation 911 (NG9-1-1)
 - Kansas 911 Council member (non-voting)
 - GIS Committee Chairperson & committee member
 - SIF Workgroup
 - GIS Data Review Committee
 - Technical Committee
 - Technical Security Subcommittee

Date	Event	Location
July 16, 2015	KDOT ARNOLD Pooled Fund Study Meeting	Topeka, KS
July 20-21, 2015	NG911 Vesta Locate Admin Training	Lawrence, KS
July 28, 2015	Kansas Association of Tax Representative (KATR) – Kansas Statewide Tax Unit Database presentation	Wichita, KS
July 30, 2015	MAGIC Clearinghouse Summit and State GIS program updates	Conference Call
July 31, 2015	“Introduction to GitHub” webinar presented in collaboration with MAGIC and MAGIC States Clearinghouse Summit by DASC, Arkansas Game & Fish Commission, and Arkansas GIS Office	Webinar
August 16-18, 2015	2015 MAGIC Clearinghouse Summit	Fayetteville, AR
August 19, 2015	NG911 - KDOT Conflation & Aggregation Pilot Project Data Review	Lawrence, KS
August 27, 2015	MAGIC Clearinghouse Summit and State GIS program updates	Conference Call
September 8-9, 2015	NG911 PSAP cut over to State Network – Cowley County	Winfield, KS
September 15-16, 2015	KDOR/Property Valuation Division, County Clerk Training - Kansas Statewide Tax Unit Database presentation	Garden City and Hays, KS
September 18, 2015	KDOR/Property Valuation Division, County Clerk Training - Kansas Statewide Tax Unit Database presentation	Salina, KS
September 22-24, 2015	KDOR/Property Valuation Division, County Clerk Training - Kansas Statewide Tax Unit Database presentation	Topeka, Wichita & Iola, KS
October 4-8, 2015	Kansas Association of Mappers (KAM) Annual Conference - NG911 Top 10 Things GISers Need To Know presentation	Wichita, KS
October 4-8, 2015	National States Geographic Information Council (NSGIC) Annual Conference	Kansas City, MO

Date	Event	Location
October 11-13, 2015	Kansas Association of Public Communications Officers (APCO)	Dodge City, KS
October 22, 2015	MAGIC Clearinghouse Summit and State GIS program updates	Conference Call
November 4, 2015	ArcGIS User Group Meeting	Topeka, KS
November 12, 2015	Traffic Record Coordinating Committee (TRCC) – Crash Mapper presentation	Topeka, KS
November 18, 2015	GIS Day - booth display	Lawrence, KS
December 2, 2015	KDHE Bureau Chief meeting – Data Sharing presentation	Topeka, KS
December 8, 2015	US Census Bureau State Partnership Projects	Webinar
January 28, 2016	US Census Bureau BAS Webinar	Webinar
February 11, 2016	Traffic Record Coordinating Committee (TRCC) – Crash Mapper demonstration	Topeka, KS
February 25, 2016	MAGIC Clearinghouse Summit and State GIS program updates	Conference Call
March 15, 2016	Association of Public Communications Officers (APCO) International Conference	Kansas City, MO
March 16, 2016	Natural Resources GIS Conference – presentation	Salina, KS
March 23, 2016	MAGIC Clearinghouse Summit and State GIS program updates	Conference Call
March 29-31, 2016	Kansas Rural Water Association (KRWA) Annual Conference – booth display	Wichita, KS
April 4, 2016	NG911 GIS Data Steward and Data Maintainer Training	Wichita, KS
April 7, 2016	EVRN560 class presentation at KU – Statewide GIS Initiatives	Lawrence, KS
April 11-13, 2016	Kansas Association of Public Communications Officers (APCO) Fall Conference – Vesta Locate User Group presentation	Topeka, KS
April 24-28, 2016	2016 Mid-America GIS Consortium Conference – Short Course, State of the State Clearinghouse presentation, Kansas NG911 presentation, and The Quest for the Elusive City Boundary-US Census Partnership presentation	Overland Park, KS
April 26, 2016	US Census, Preparation for the 2020 Census, Kansas Legislative Research Department	Topeka, KS
May 3, 2016	NG911 GIS Data Steward and Data Maintainer Training	Garden City, KS
May 12, 2016	Traffic Record Coordinating Committee (TRCC) – Crash Mapper demonstration	Topeka, KS
June 7, 2016	NG911 GIS Data Steward and Data Maintainer Training	Hays, KS
June 23, 2016	NG911 GIS Data Steward and Data Maintainer Training	Manhattan, KS
June 27 – July 1, 2016	Esri International Users Conference	San Diego, CA

ADDITIONAL INITIATIVES

Esri Enterprise License Agreement

In January 2011, the state of Kansas signed an Enterprise License Agreement (ELA) with Esri, a leader in the GIS software industry. This agreement allows all state agencies to acquire new software licenses at a significant discount compared to the Esri State Master Purchase Agreement (MPA). DASC facilitates the ELA by developing software quotes for state agencies, distributing software media and license files, providing technical support as requested. During FY2015, DASC worked with the Secretary of Administration (acting CIO), OITS, state GIS leaders, and Esri representatives to negotiate a new three-year ELA. The new agreement is effective February 1, 2015 – January 31, 2018. In early CY2017, DASC will assemble a similar team of stakeholders to work towards the next three year ELA renewal to provide enterprise-level GIS software to Kansas state government users.

Initial three-year agreement:

- ELA Year 1 – February 1, 2011 – January 31, 2012
- ELA Year 2 – February 1, 2012 – January 31, 2013
- ELA Year 3 – February 1, 2013 – January 31, 2014

One-year extension:

- ELA Year 4 – February 1, 2014 – January 31, 2015

Second three-year agreement:

- ELA Year 5 – February 1, 2015 – January 31, 2016
- ELA Year 6 – February 1, 2016 – January 31, 2017
- ELA Year 7 – February 1, 2017 – January 31, 2018

Software provided under Kansas State Government ELA

Item	Total Qty/Seats
Desktop Software (Single Use or Concurrent Use)	
Basic (ArcView), Standard (ArcEditor), and Advanced (ArcInfo)	unlimited
Desktop Extension Software (Single Use or Concurrent Use)	
ArcGIS 3D Analyst, ArcGIS Data Reviewer, ArcGIS Geostatistical Analyst, ArcGIS Network Analyst, ArcGIS Publisher, ArcGIS Schematics, ArcGIS Spatial Analyst, and ArcGIS Workflow Manager	unlimited
Server Software (Basic/Standard/Advanced)	
ArcGIS for Server Workgroup and Enterprise	unlimited
Server Extensions	
ArcGIS 3D Analyst, ArcGIS Geostatistical Analyst, ArcGIS Image Extension, ArcGIS Network Analyst, ArcGIS Schematics, ArcGIS Spatial Analyst, ArcGIS GeoEvent, and ArcGIS Workflow Manager	unlimited
ArcGIS Engine	unlimited
ArcGIS Engine Extensions (Single Use or Concurrent Use)	
ArcGIS 3D Analyst, ArcGIS Geodatabase Update, ArcGIS Network Analyst, ArcGIS Schematics, and ArcGIS Spatial Analyst	unlimited
ArcGIS Runtime	unlimited
ArcGIS Runtime Extensions (Single Use)	
ArcGIS 3D Analyst, ArcGIS Network Analyst, and ArcGIS Spatial Analyst	unlimited

ELA also includes:

- ArcGIS Subscription (Level 5) – 500 named users, 62,500 credits
- Community Analyst Subscription (Level 1) – 5 named users
- Community Analyst (additional user pack) – 5 named users
- Esri Developer Network – 2 seats
- ArcGIS Data Interoperability for Desktop Extension – 2 seats

State Agencies Covered by the Esri ELA

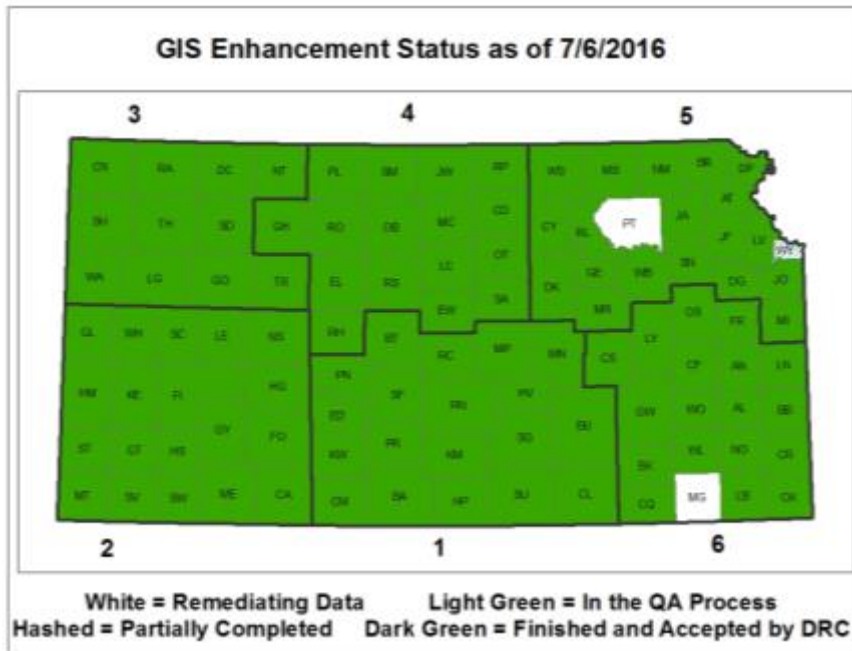
AGENCY NUMBER	AGENCY NAME
34	ADJUTANT GENERAL
39	DEPARTMENT ON AGING
46	KANSAS DEPARTMENT OF AGRICULTURE
55	ANIMAL HEALTH DEPARTMENT
58	KANSAS HUMAN RIGHTS COMMISSION
82	ATTORNEY GENERAL
83	KANSAS BUREAU OF INVESTIGATION
94	BANK COMMISSIONER
102	BEHAVIORAL SCIENCES REGULATORY BOARD
105	STATE BOARD OF HEALING ARTS
143	CORPORATION COMISSION
159	STATE DEPARTMENT OF CREDIT UNIONS
171	KANSAS HEALTH POLICY AUTHORITY
173	DEPARTMENT OF ADMINISTRATION
176	KANSAS DEVELOPMENT FINANCE AUTHORITY
178	OFFICE OF ADMINISTRATIVE HEARINGS
206	BOARD OF EMERGENCY MEDICAL SERVICES
234	FIRE MARSHAL
264	DEPARTMENT OF HEALTH AND ENVIRONMENT
276	DEPARTMENT OF TRANSPORTATION
280	KANSAS HIGHWAY PATROL
288	STATE HISTORICAL SOCIETY
296	DEPARTMENT OF LABOR
331	INSURANCE DEPARTMENT
349	JUDICIAL COUNCIL
350	JUVENILE JUSTICE AUTHORITY
359	KANSAS ARTS COMMISSION
365	KANSAS PUBLIC EMPLOYEES RETIREMENT SYSTEM
371	KANSAS TECHNOLOGY ENTERPRISE CORPORATION

AGENCY NUMBER	AGENCY NAME
373	STATE FAIR BOARD
422	LEGISLATIVE ADMINISTRATIVE SERVICES
425	LEGISLATIVE RESEARCH DEPARTMENT
428	LEGISLATURE
434	STATE LIBRARY
450	KANSAS LOTTERY
482	BOARD OF NURSING
521	DEPARTMENT OF CORRECTIONS
531	BOARD OF PHARMACY
540	LEGISLATIVE DIVISION OF POST AUDIT
543	KANSAS REAL ESTATE APPRAISAL BOARD
549	REAL ESTATE COMMISSION
553	KANSAS RACING AND GAMING COMMISSION
561	BOARD OF REGENTS
562	COURT OF TAX APPEALS
565	DEPARTMENT OF REVENUE
622	SECRETARY OF STATE
625	SECURITIES COMMISSIONER OF KANSAS
626	KANSAS SENTENCING COMMISSION
629	DEPARTMENT OF SOCIAL AND REHABILITATION SERVICES
634	STATE CONSERVATION COMMISSION
652	DEPARTMENT OF EDUCATION
663	BOARD OF TECHNICAL PROFESSIONS
670	STATE TREASURER
677	JUDICIAL BRANCH
694	COMMISSION ON VETERAN'S AFFAIRS
709	KANSAS WATER OFFICE
710	KANSAS DEPARTMENT OF WILDLIFE AND PARKS
	KANSAS DATA ACCESS AND SUPPORT CENTER

NEXT GENERATION 911 (NG911)

While NG911 means different things to different people, it is first and foremost the replacement of the current analog 911 system to digital 911 communications. Major changes will be required to transition to NG911; 911 must be enhanced to support new features such as text and video. New 911 applications and Internet Protocol (IP)-enabled customer premise equipment (CPE) must be installed. NG911 will require a different means to automatically identify a caller's location and successfully route the "call" to the appropriate PSAP. NG911 will rely heavily on Geographic Information Systems (GIS) data, which must be standardized and have near real-time accuracy on a statewide basis. (Source: Next Generation 911 GIS Enhancement Project, <http://kansas911.org/DocumentCenter/View/265>)

To develop an accurate, statewide, standardized GIS database to support geospatial call routing and PSAP operations, the Kansas 911 Coordinating Council initiated a three-phase data enhancement project. The phases included 1) GIS Data Gap Analysis; 2) Data Remediation; and 3) Quality Assurance. Upon completion of all three phases, local jurisdictions assumed responsibility for the long-term data maintenance. By the end of FY2016, nearly all counties/PSAP jurisdictions across the state had completed the data enhancement process.



During FY2016, DASC supported many aspects of the NG911 initiative. DASC staff served on numerous committees and contributed to the development of several policy, procedures, plans, and standards documents.

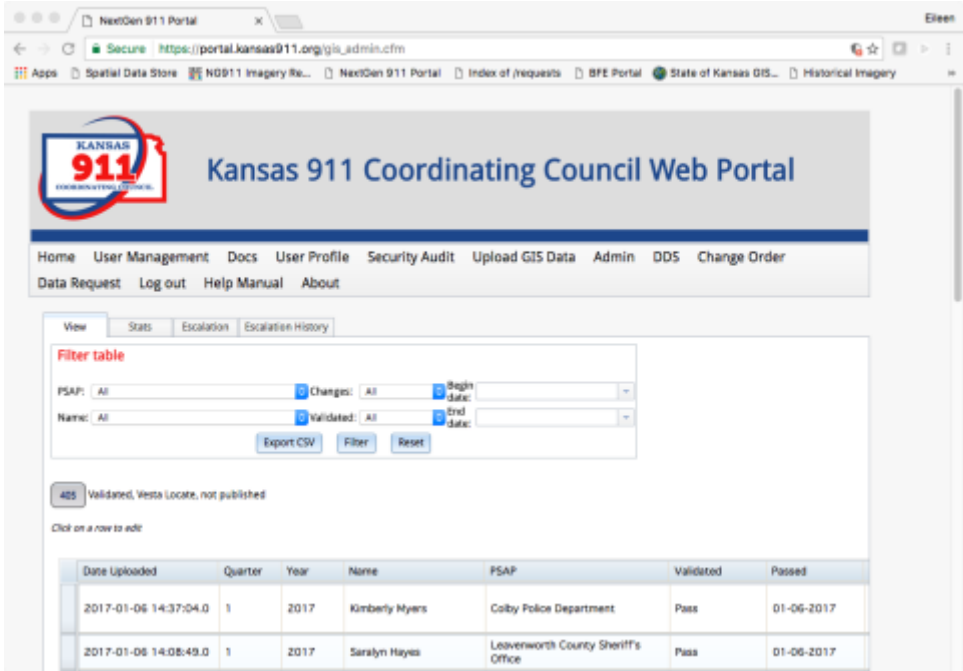
The NG911 Program Portal (*Portal*) has become an important content management system for the NG911 project. The Portal serves as a centralized portal for all content, documents, and data related to the NG911 initiative. There were numerous

enhancements to the Portal in FY2016, including accepting GIS data maintenance submissions, PSAP Expenditure Reports, and Change Order Requests (COR). The Portal also contains various administration tools that allow the 911 Council to view submission statistics and reports. Additional enhancements include advanced user and document settings, as well as an email module for communicating with the NG911 community.

NG911 Program Portal – login page




NG911 Program Portal – GIS Data Submission Module




NG911 Toolbox

The NG911 Toolbox continues to grow and mature based on project needs and Standards. The Toolbox is organized into modules that include Adjustment Tools, Comparison Tools, Conversion Tools, Enhancement Tools, MSAG Tools, Submission Tools, and Validation Tools. The NG911 Toolbox is a user-friendly tool that ensures the data maintenance submissions are standardized, current, accurate, and compliant with the *Kansas NG911 GIS Data Model*.

Expanded NG911 Toolbox & sample validation results



- [-] Kansas NG911 GIS Tools.tbx
 - [-] Adjustment Tools
 - Create Geocode Exceptions
 - Fix Domain Case
 - Fix Duplicate ESB IDs
 - [-] Comparison Tools
 - Compare NG911 Data
 - Compare NG911 Geodatabases
 - [-] Conversion Tools
 - Add/Update Parcel Layer
 - Convert 1.1 to 2.0
 - GDB to Shapefiles
 - Zip NG911 Geodatabase
 - [-] Enhancement Tools
 - Add KSPID
 - Assign Unique Identifier
 - Assign Unique Identifier Road Alias Table
 - Calculate Label
 - Check Road Elevation Direction
 - Compare Road Names
 - Create Road Alias Records
 - Find Address Range Overlaps
 - Geocode Address Points
 - Split Single ESB Layer
 - US National Grid Calculator
 - Verify Road Alias
 - [-] MSAG Tools
 - Check TN List
 - Create MSAG Locator
 - Geocode Prepped TN List
 - MSAG NG911 Comparison
 - [-] Submission Tools
 - Check Data and Zip
 - [-] Validation Tools
 - 1 Check Template
 - 2 Check Address Points
 - 3 Check Roads
 - 4 Check Boundaries
 - 5 Check Additional Layers
 - 6 Optional Clear Results Table
 - 7 Optional Update Domains
 - 8 Optional Verify Topology Exceptions
 - 9 Optional Check All Required



```

Completed
Close
<< Details

Close this dialog when completed successfully.

Completed check for required field
values: 0 issues found
AddressPoints: 3773 records marked for
submission
RoadCenterline: 2969 records marked for
submission
RoadAlias: 307 records marked for
submission
AuthoritativeBoundary: 1 records marked
for submission
MunicipalBoundary: 5 records marked for
submission
CountyBoundary: 1 records marked for
submission
ESZ: 8 records marked for submission
E:\Kristen\Data\NG911\GDB\KSN911
_HP.gdb\HYDRANTS does not exist
E:\Kristen\Data\NG911\GDB\KSN911
_HP.gdb\GATES does not exist
ESB_ENS: 3 records marked for
submission
ESB_LAW: 4 records marked for
submission
ESB_FIRE: 4 records marked for
submission
ESB: 8 records marked for submission
Checking for invalid geometry..
E:\Kristen\Data\NG911\GDB\KSN911
_HP.gdb\HYDRANTS does not exist
E:\Kristen\Data\NG911\GDB\KSN911
_HP.gdb\GATES does not exist
Completed for invalid geometry: 0
issues found
    
```

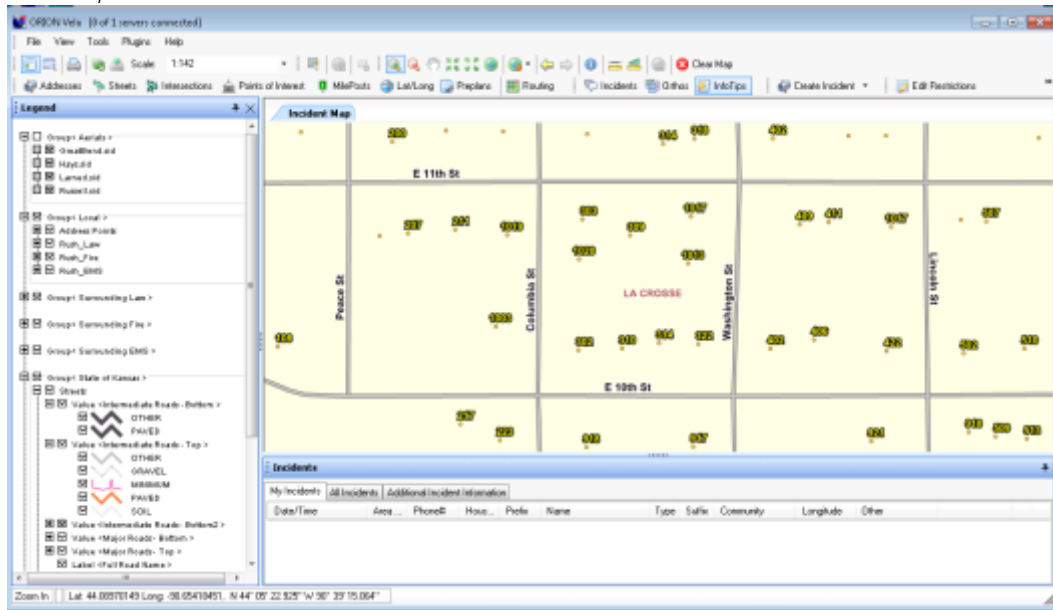
DESCRIPTION	LAYER	FIELD	FEATUREID
Error: Feature not inside authoritative boundary	Hydrants		14813183744690
Error: Feature not inside authoritative boundary	Hydrants		14813183744699
Error: Feature not inside authoritative boundary	Hydrants		14813183744712
Error: Feature not inside authoritative boundary	Hydrants		14813183744756
Error: Feature not inside authoritative boundary	Hydrants		14813183744758
Error: Feature not inside authoritative boundary	Gates		14812001719
Notice: Segment's address range is from high to low instead of low to high	RoadCenterline		RLC00467
Notice: Segment's address range is from high to low instead of low to high	RoadCenterline		RLC00468
Notice: Segment's address range is from high to low instead of low to high	RoadCenterline		RLC00469
Notice: Segment's address range is from high to low instead of low to high	RoadCenterline		RLC00472

[NG911 Vesta Map Templates](#)

DASC creates, manages and updates (publishes) the *Vesta Locate* map templates for the hosted call handling solution's centrally-managed PSAPs using the locally maintained NG911 GIS data.

Over 130 map templates were published during FY2016. *Vesta Locate* map templates are similar to an Esri ArcMap project file. A template contains a table of contents with the GIS data layers, as well as symbology, zoom settings, label settings, and data source paths for the GIS data.

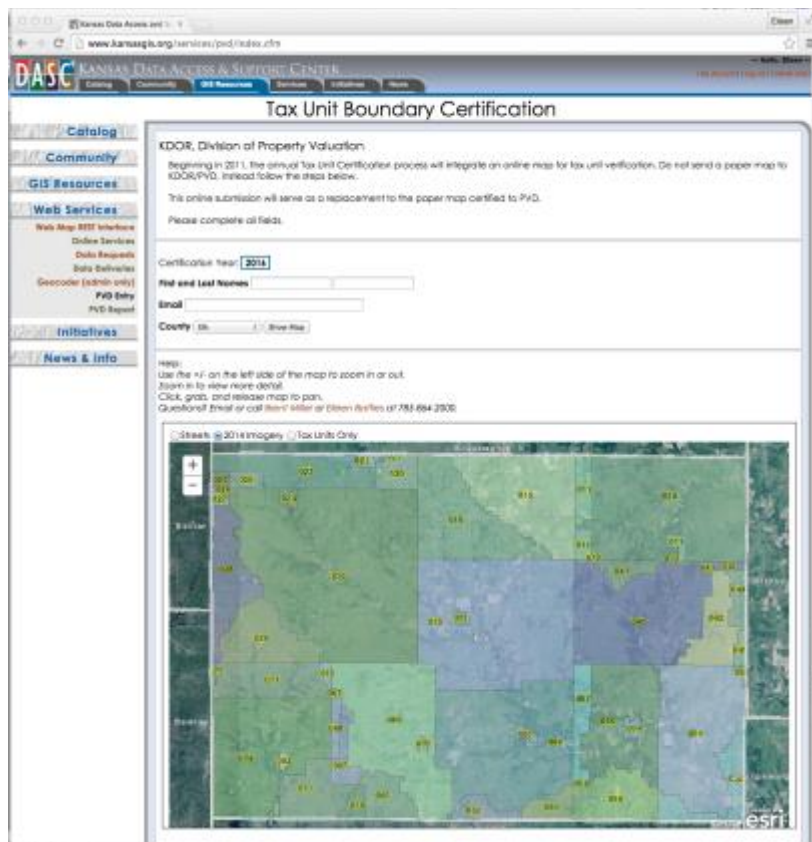
Vesta Map



KANSAS STATEWIDE GIS TAX UNIT BOUNDARY DATABASE

Since 2009, DASC has participated in a collaborative effort with the State of Kansas Department of Revenue/Property Valuation Division (KDOR/PVD), and county clerks to create and verify a statewide GIS tax unit boundary file. Every year, county clerks certify tax unit updates to KDOR/PVD from December 1 through November 30. As part of this process, DASC has developed a custom map viewer that allows clerks to interactively review tax unit boundaries and determine if updates are necessary. If a county has changes, they submit revised data to DASC in GIS format, or request a large-format paper map on which they annotate boundary edits. DASC has published an annual statewide tax unit boundary file for the years 2011 – 2015 and is currently updating the 2016 version of the database.

The success of this project is largely due to the support and participation from county clerks across the state. Before the statewide GIS dataset was available, clerk's offices often had to print and ship tax unit maps to numerous utilities and private sector companies. The availability of this dataset has alleviated this need and streamlined access to current and authoritative data.



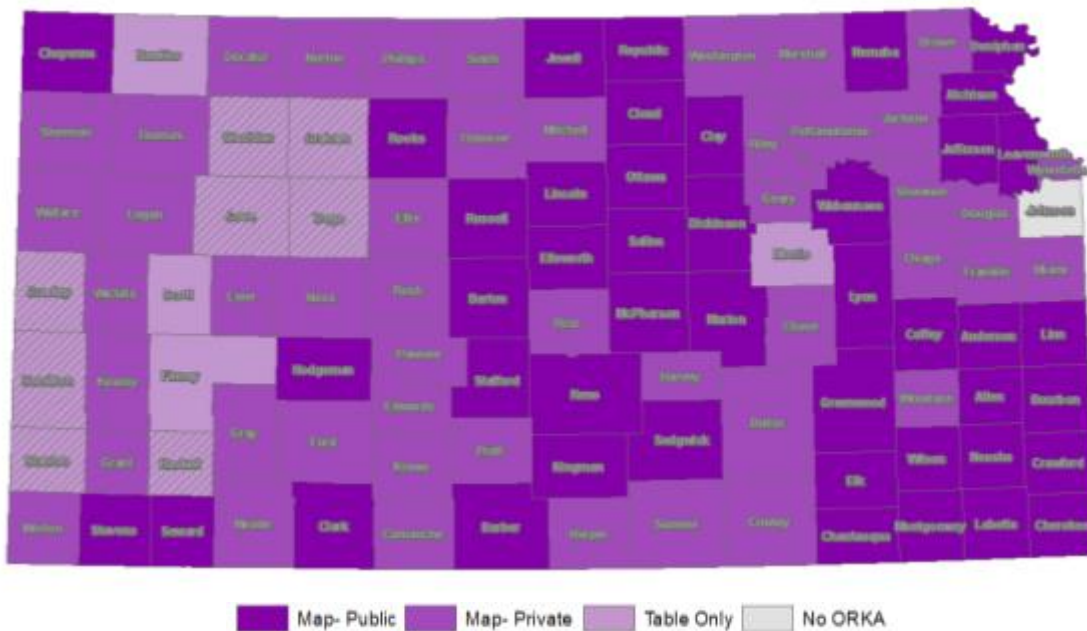
Tax Units Boundary interactive map viewer

OPEN RECORDS FOR KANSAS APPRAISERS (ORKA)

ORKA is a web-based application that provides an integrated display of GIS databases (e.g., parcel boundaries, aerial imagery, and road centerlines) with property characteristics from the county appraiser's Computer Assisted Mass Appraisal (CAMA) database. ORKA is a collaborative effort with the Kansas Department of Revenue's Division of Property Valuation (PVD), DASC, and county governments across the state. Kansas is one of a few states in the nation to have a standardized CAMA system, which makes a project of this scope feasible. The Kansas Department of Revenue (KDOR) hosts the CAMA system for 94 of 105 counties. The other 11 counties locally host their own CAMA system, two of which partner with DASC to use ORKA.

DASC operates the application server framework that powers ORKA and publishes all map services required by the application. The ORKA application supports a map option for counties with GIS data and a table-view option for counties that don't have parcel data. DASC works directly with county appraiser's offices and GIS departments to acquire GIS data updates. Counties can choose to have their ORKA site password-protected or publically available. As of June 30, 2016, 89 counties were using ORKA with the map option (45 publically, 44 password-protected), and 15 counties were enabled to use the table-view option.

In addition to the online ORKA application, the map services published at DASC can also be viewed within the standardized appraisal software's optional mapping interface used by county appraisers across the state. Currently, all of the counties using ORKA are leveraging these map services inside their appraisal software.



KANSAS ONLINE WATER USE REPORT

Water, like other natural resources in Kansas, is protected for the use and benefit of the citizens of this state. The Kansas Water Appropriation Act protects both the people's right to use Kansas water and the state's supplies of groundwater and surface water for the future through water rights. The law is administered by the Kansas Department of Agriculture's Division of Water Resources (DWR), which issues permits to appropriate water, regulates usage, and keeps records of all water rights in the state. A water right is a real property right under which a person may lawfully divert and use water.

Each year approximately 14,650 water use reports are mailed to water right holders in Kansas. Due to the volume of information DWR receives, a standard, paper form is required. Compliance with the reporting requirement has drastically improved the state water use database yielding valuable information. This has resulted in Kansas having a superior water use database. However, the paper forms are very cumbersome for both DWR and water right holders, especially irrigators and public water suppliers that have many water rights.

During the spring of 2013, the KGS and KDA began development of a web-based water use reporting system. The initial phase of the project established the backend application infrastructure and created the Irrigation and Municipal reporting modules. Funded by the Kansas GIS Policy Board (Kansas Water Plan fund), Phase II (2014) of the project focused on a test release of the Irrigation and Municipal modules, and the development of 10 additional reporting modules (artificial recharge, contamination remediation, dewatering, domestic, fire protection, industrial, recreation, sediment storage, stockwater and thermal exchange). Phase III (2015), focused on the first public launch of the application, enhancements and modifications to the reporting modules based on user feedback, and development of the Hydraulic Dredging and Water Power reporting modules. By Phase IV, the 2016 reporting year, the site will contain report modules for all 14 beneficial uses of water. During FY2016, DASC continued to refine and enhance the application and utilization continued to climb. The number of reports filed online increased by over 600% from 2013 (251 reports) to 2015 (1,881 reports).

Module #	Module Name	Implementation Phase
1	Artificial Recharge	Version 2
2	Contamination remediation	Version 2
3	Dewatering	Version 2
4	Domestic	Version 2
5	Fire protection	Version 2
6	Industrial	Version 2
7	Irrigation	Version 3
8	Municipal	Version 3
9	Recreation	Version 2
10	Sediment Storage	Version 2
11	Stockwater	Version 2
12	Thermal Exchange	Version 2
13	Hydraulic Dredging	Version 1
14	Water Power	Version 1

2011 IRRIGATION WATER USE REPORT

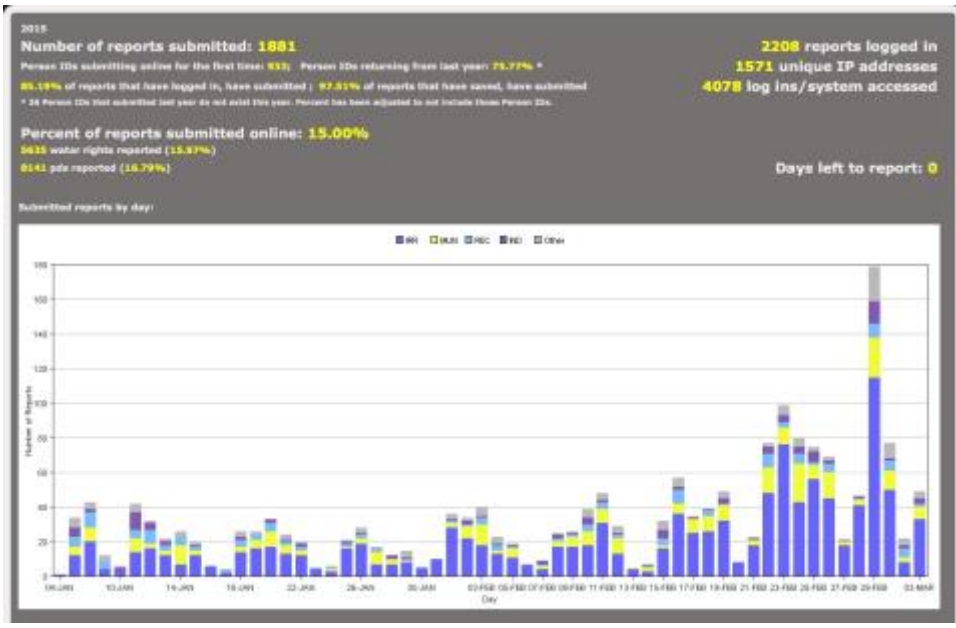
This is the annual Water Use Report required to be filed for all Vested or Appropriative Rights. **IMPORTANT:** Kansas Law requires this completed report to be filed by March 1. Failure to do so will subject the owner to a civil fine not to exceed \$250 per acre number. If any part of diversion shown below is permanently suspended, please circle it. IF YOU DID NOT USE WATER, YOU MUST REPORT THE NUMBER FOR NON-USE TO HELP PROTECT YOUR WATER RIGHT! Information on each part of diversion must be completed. Please begin by reading the attached instructions and definitions.

FILE NUMBER	LEGAL DESCRIPTION OF POINT(S) OF DIVERSION				ACRES IRR.	INCLUDE MULTIPLICATION FACTOR			PUMP HOURS PUMPED	PUMP RATE (GPM)	CROP CODE	TYPE OF SYSTEM	TYPE OF ENERGY	WELL DATA		
	QUALIFIERS	SEC TWP R1G	CM	CR		IRRIGATING WATER METER READING	BASELINE WATER METER READING	METERS QUANTITY OF WATER						DEPTH TO WATER	DATE MEASURED	
9781-00	NC SE	27-23S-13W	1	4	M	130	49,441,200	13,441,600	63,800,400	G		2	4	0	20-3	2-12
12869-00 11	1320N 3855W AKA: WELL #11	33-24S-12W	1			130	44,262,900	87,933,100	46,670,200	G		2	4	0	2-6	2-11
18823-00 1	3860N 1320W AKA: WELL #1	34-23S-13W	1	4		130	48,219,900	89,673,300	69,456,400	G		2	4	0	17-8	2-12
18903-00 2	1320N 3500W AKA: 5 YR ALLOCATION - WELL #2	27-23S-13W	2	4	A	90	477,887	643,361	165,472	A		2	4	0	2-9	2-12
17938-00	3860N 2610W AKA: 8' 8" ORIG WELL	34-24S-12W	4	4	L		See File	22,579	16,170	77,000		2	5	7		
18071-00	3860N 1300W	28-28S-11W	1	4	M	130	63,500,300	48,629,600	78,129,200	G		2	4	0	43-1	2-12
19430-00 LW	3840N 3960W	29-23S-14W	1	4		130	54,074,300	09,192,300	54,716,000	G		2	4	0	26-11	2-12
19431-00 E	3860N 1320W	29-23S-14W	3	4		130	18,170,700	19,744,200	91,575,900	G		2	4	0	19-10	2-12

CALENDAR YEAR: 11 OFFICE USE: 4394 FIELD OFFICE: 1 CD: 5177
 I submit the report as the best information available. I understand that knowingly falsifying the report is a violation of state law.

WATER RESOURCES RECEIVED
MAR 01 2012

Paper Water Use Report



Kansas Online Water Use Report Dashboard

Kansas Water Use Reporting System

Enter your PIN and Person ID
[Click here for PIN and Person ID help](#)

PIN: Person ID:

Welcome to the Kansas Water Use Reporting System. Annual water use can be reported on-line to comply with the water use reporting requirements of the Kansas Water Appropriation Act. Owners of water rights in Kansas must report the previous years' use for all uses, except domestic use, by March 1 of each year. Filing a complete and accurate report will help protect your water right.

If you need help, please read the [instructions](#) for completing the on-line report and [Terms and Definitions](#).

Failure to file a water use report by **March 1**, or filing an incomplete report, subjects the owner to a civil penalty not to exceed \$250 per water right permit. See [K.S.A. 82a-732](#).

Application login screen

Kansas Annual Water Use OnLine Reporting System

[Water Use List](#) | [Print Report](#) | [View Report](#) | [Instructions](#) | [Terms and Definitions](#) | [Change Address](#) | [Log out](#)

Irrigation Report

Point of Diversion	Irrigation	Quantity	Well Depth (ft)	Depth Water
3154-00 <small>3154 N 51st St - 3154-000 HW 19 - 00170 - 1 660</small> REVERTED BACK TO ORIGINAL WELL Link	Acres: <input type="text"/> Energy Type: <input type="text" value="Electric"/> System Type: <input type="text" value="Pond"/> Is Irrigation allowed for well year? <input type="radio"/> Yes <input type="radio"/> No	Report Water Meters: <input type="text"/>	<input type="text"/>	<input type="text"/>

[Next](#)

Contact us: 785-564-6626 water@ksdhs.gov

Irrigation Report

Kansas Annual Water Use OnLine Reporting System

[Water Use List](#) | [Print Report](#) | [View Report](#) | [Instructions](#) | [Terms and Definitions](#) | [Change Address](#) | [Log out](#)

Irrigation Report

Point of Diversion	Irrigation	Quantity	Well Depth (ft)	Depth Water
3154-00 <small>3154 N 51st St - 3154-000 HW 19 - 00170 - 1 660</small> REVERTED BACK TO ORIGINAL W Link	Acres: <input type="text"/> Energy Type: <input type="text" value="Electric"/> System Type: <input type="text" value="Pond"/> Is Irrigation allowed for well year? <input type="radio"/> Yes <input type="radio"/> No	Report Water Meters: <input type="text"/>	<input type="text"/>	<input type="text"/>

If you grew crops on your land last year, check the appropriate crops:

<input type="checkbox"/> Alfalfa	<input type="checkbox"/> Corn	<input type="checkbox"/> Sorghum (Milo)	<input type="checkbox"/> Soybeans
<input type="checkbox"/> Wheat	<input type="checkbox"/> Oats	<input type="checkbox"/> Barley	<input type="checkbox"/> Rye
<input type="checkbox"/> Dry Beans	<input type="checkbox"/> Sunflowers	<input type="checkbox"/> Athletic Field	<input type="checkbox"/> Golf Course
<input type="checkbox"/> Truck Farm	<input type="checkbox"/> Orchard	<input type="checkbox"/> Nursery	<input type="checkbox"/> Pasture
<input type="checkbox"/> Cotton	<input type="checkbox"/> Sod/Turf Grass	<input type="checkbox"/> Grapes	<input type="checkbox"/> Other

Double Crop? Yes No

[OK](#)

Irrigation Report

Part B: Monthly Water Use Summary (Report Year "2015")

Report all amounts in units of **1000 gallons**

	Column 1 Raw Water Diverted	Column 2 Water Purchased From All Sources	Column 3 Water Sold to Public Suppliers	Column 4 Water Sold to Industrial, Stock Bark Containers	Column 5 Water Sold to Residential and Commercial Customers	Column 6 Metered Water Provided Free	Column 7 Unaccounted For Water (will be substituted)	Column 8 % of Unaccounted for Water (will be substituted)
Jan								
Feb								
Mar								
Apr								
May								
Jun								
Jul								
Aug								
Sep								
Oct								
Nov								
Dec								

Monthly Water Use Summary

KANSAS FIRSTNET

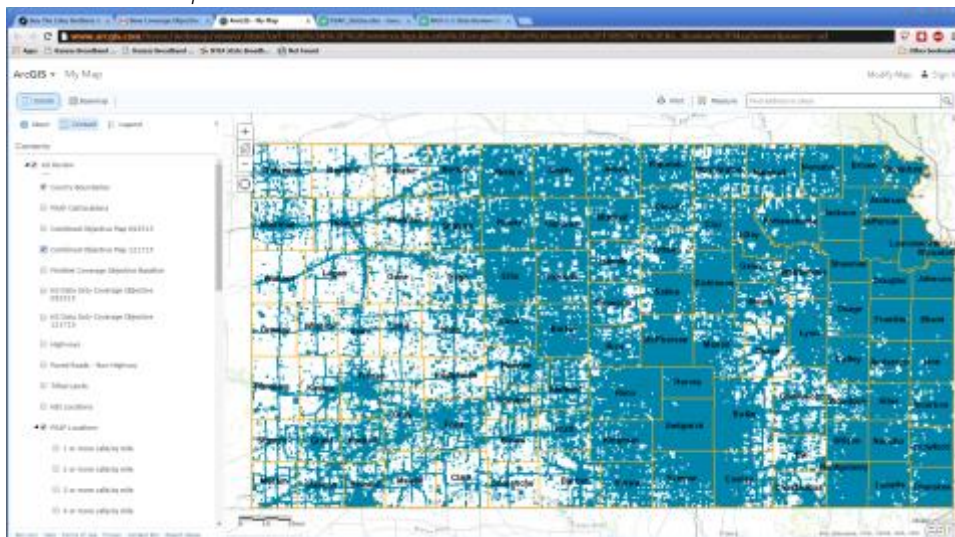
The First Responder Network Authority (FirstNet) is an independent authority within the National Telecommunications and Information Administration created to provide emergency responders with the first high-speed wireless broadband network dedicated to public safety. Each state has the responsibility to define the areas that shall be covered by the FirstNet network. In collaboration with the Kansas Adjutant General's Department, which plays a leadership role for the Kansas FirstNet project, DASC assisted in the development the coverage objective map for Kansas.

The Adjutant General's Department collected Public Safety Access Points (PSAP) call information for the year 2014. DASC utilized the newly available NG911 data and advanced geocoding routines to geocode the PSAP call data. DASC compiled a state coverage objective using several local, and larger-scale, datasets - 911 call locations provided by local PSAPs, fire response locations from the National Fire Incident Reporting System (NFIRS), critical infrastructure from the KAG, automobile crash locations, State and Federal highways and non-highway paved roads from KDOT, addressable structures from NG911, served warrant locations from the Kansas Bureau of Investigation, and tribal lands population density from the US Census Bureau.

Once all layers were assembled, DASC converted each to a 1 mile x 1 mile square grid resolution as per the national FirstNet standard. According to rules developed by the Adjutant General's Department for each layer, a new coverage objective map was created and submitted to NTIA. Phase 1 version of the coverage objective was submitted September 30, 2015 and Phase 2 (which included updates and additional data) was submitted on December 31, 2015.

For more information on the Kansas FirstNet program please visit <http://www.kansastag.gov/OEC.asp?PageID=507>

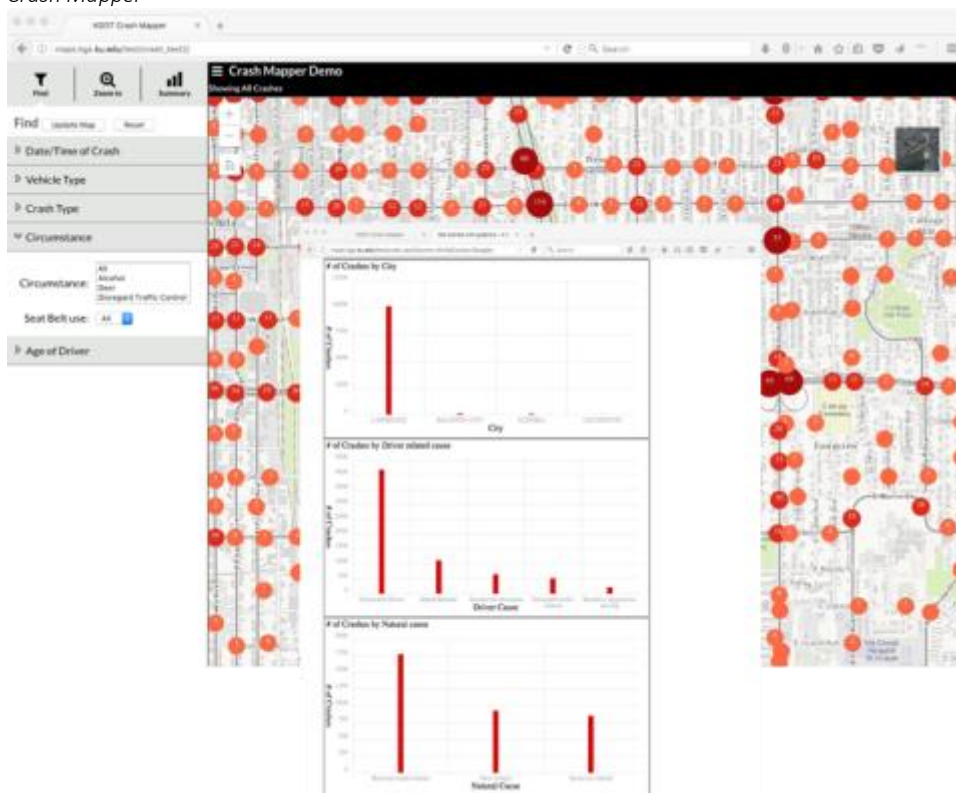
Kansas FirstNet Map Viewer



CRASH MAPPER

In collaboration with the Kansas Department of Transportation (KDOT) and the Traffic Records Coordinating Council (TRCC), DASC is working on a two-phased project related to crash records. Phase one, Crash Map Data Enhancement, is an effort to determine locations for crash records provided to KDOT. Crash records are typically submitted by local law enforcement jurisdictions and the Kansas Highway Patrol (KHP) as a distance from a road intersection. Upon receipt, DASC runs the data through a series of address standardization routines to remove data entry errors and to improve road name matching to the current NG911 roads layer. Crash locations deemed sufficiently accurate are reported to KDOT. Phase two of the project involves the development of a web-based mapping application and custom reporting tool (available via REST endpoint) to query and display these crash records. This application is currently under review by KDOT and DASC will incorporate the feedback into a final version for public release. DASC will continue to work on crash records not yet geographically located as data scrubbing techniques are improved and updates to NG911 roads data become available.

Crash Mapper



[STREAMLINED SALES TAX PROJECT \(SSTP\)](#)

In Kansas, as in many states, retailers must use destination-based sourcing rules to correctly identify the local sales tax to charge on a retail sales transaction. Under the destination-based sourcing rules, sales generally are sourced to the location where the purchaser receives the item sold. Retailers who ship or deliver sold items to their customers' locations are required to collect the local sales tax in effect where delivery is made (source - www.ksrevenue.org/sstpoverview.html).

In collaboration with KDOR, DASC supports the Kansas SSTP project by developing and maintaining the databases, web services, and workflows necessary for operating the streamlined sales tax portal, and participating in the National Streamlined Sales Tax Compact. This project requires the integration of multiple tabular and geographic data sources from federal, state, and local government, and the US Postal Service, to produce the rates and boundaries file on a quarterly basis. At the core of the project is a series of data integration and geoprocessing services that tie the data together. DASC has leveraged this project to build relationships with state agencies and local government mapping programs to continually update and improve the quality of the database.

The screenshot shows a web browser window displaying the Kansas Department of Revenue's website. The URL in the address bar is <https://www.ksst.kdor.ks.gov/lookup.cfm?CRID=1377100&CFTOKEN=33022828&sessionid=cc30bb7d95a6daef5ca61...>. The page features the Kansas Department of Revenue logo and a navigation menu with links for Home, Personal Tax, Business Tax, Vehicles, E-services, Forms, Contact Us, Divisions, Media, and Miscellaneous. The main content area is titled "Kansas Sales and Use Tax Address Tax Rate Locator" and includes a search bar, a "FILE YOUR TAXES ONLINE" button, and a list of related items such as "Contact e-services", "Manage your account online", "Business registration online", "Local sales tax rate changes", "Frequently asked questions", "Resolve tax issues", "New tax notices", "Tax rate locator", and "Policy library". The footer contains the text "© Copyright 2011 Kansas Department of Revenue | Privacy Statement | Security Statement".

WEB SERVICES

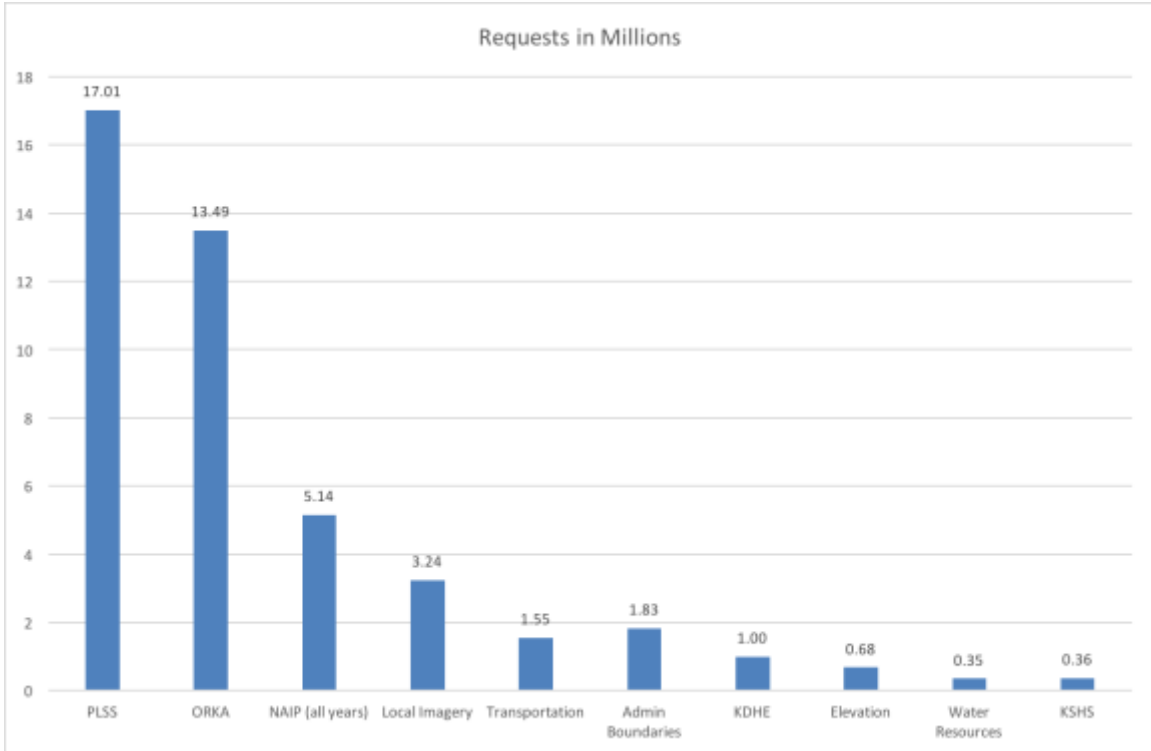
During FY2016, DASC provided application development and hosting services for the following projects:

- Kansas NG911 Program Portal – 911 Coordinating Council
- Kansas Water Use Report – KDA
- Open Records for Kansas Appraisers (ORKA) – KDOR
- Streamlines Sales Tax Database & Web Services – KDOR
- Crash Mapper – TRCC/KDOT
- KWO Public Water Supply (PWS) Mapping Portal
- Historical Property Inventory – Kansas State Historical Society (KSHS)
- Archeological Sites Inventory – KSHS
- Fish & Wildlife Contracts and Reporting application – Kansas Department of Wildlife, Parks, & Tourism
- Map service hosting for KDHE public applications
- Database & Content Management System (CMS) - Northeast Kansas Environmental Services (NEKES)

MAP SERVICE STATISTICS

During FY2016, DASC hosted over 350 map services that received over 40 million requests.

Top 10 Map Services – total number of requests per service



FUTURE DIRECTION

Kansas GIS Initiative Strategic Planning:

- Updated strategic plan focusing on primary components of the Kansas GIS Initiatives, including, but not limited to:
 - Kansas GIS Policy Board, Technical Advisory Committee, and TAC Data Committees
 - Kansas One Map
 - DASC

Esri Enterprise License Agreement (ELA) management:

- Work with Esri and state government stakeholders to renew Esri ELA agreement
- Facilitate access to ELA products by developing software quotes, distributing software media and license files, and providing technical support
- Administer enterprise-level ArcGIS online

Database & Application Development Activities:

- Kansas Floodplain Mapping Portal – Kansas Department of Agriculture
- KWO Public Water Supply (PWS) Mapping Portal
- Statewide Tax Units Database v2016 update
- Streamlined Sales Tax Database:
 - Incorporate local GIS data updates made available through NG911 GIS Enhancement project
- ORKA:
 - Statewide parcel geodatabase and web service
 - ORKA version 4.0 release
 - Completion of statewide CRS table merge and web services
- Kansas Water Use Report:
 - Public release for 2017 reporting period
 - Application enhancements based on user input
 - Enhance to executive dashboard
- Crash Mapper:
 - Complete Crash Mapper application and associated web services
 - Complete work on data enhancement activities
 - Application and data maintenance services
- NG911 Program Support Activities:
 - Development and management of the NG9-1-1 Program Portal

- Management of statewide imagery database – data distribution, map service user account management
- Development and management of map templates for hosted call handling solution mapping interface (Vesta Map)
- Production and deployment of statewide imagery Network Attached Storage (NAS) devices in support of each Public Safety Answering Point (PSAP) cutover
- Coordination and outreach activities
- Program and policy development
- Coordination & Outreach Activities:
 - Continue to promote the Kansas GIS Initiative and DASC services at conferences and events across the state
 - Serve on GIS-related committees
 - KAM Past-President (Kristen Jordan)
 - 2017 MAGIC GIS Clearinghouse Summit, Columbia, MO (Eileen Battles, planning committee)
 - MAGIC GIS Steering Committee
 - NSGIC State Representative