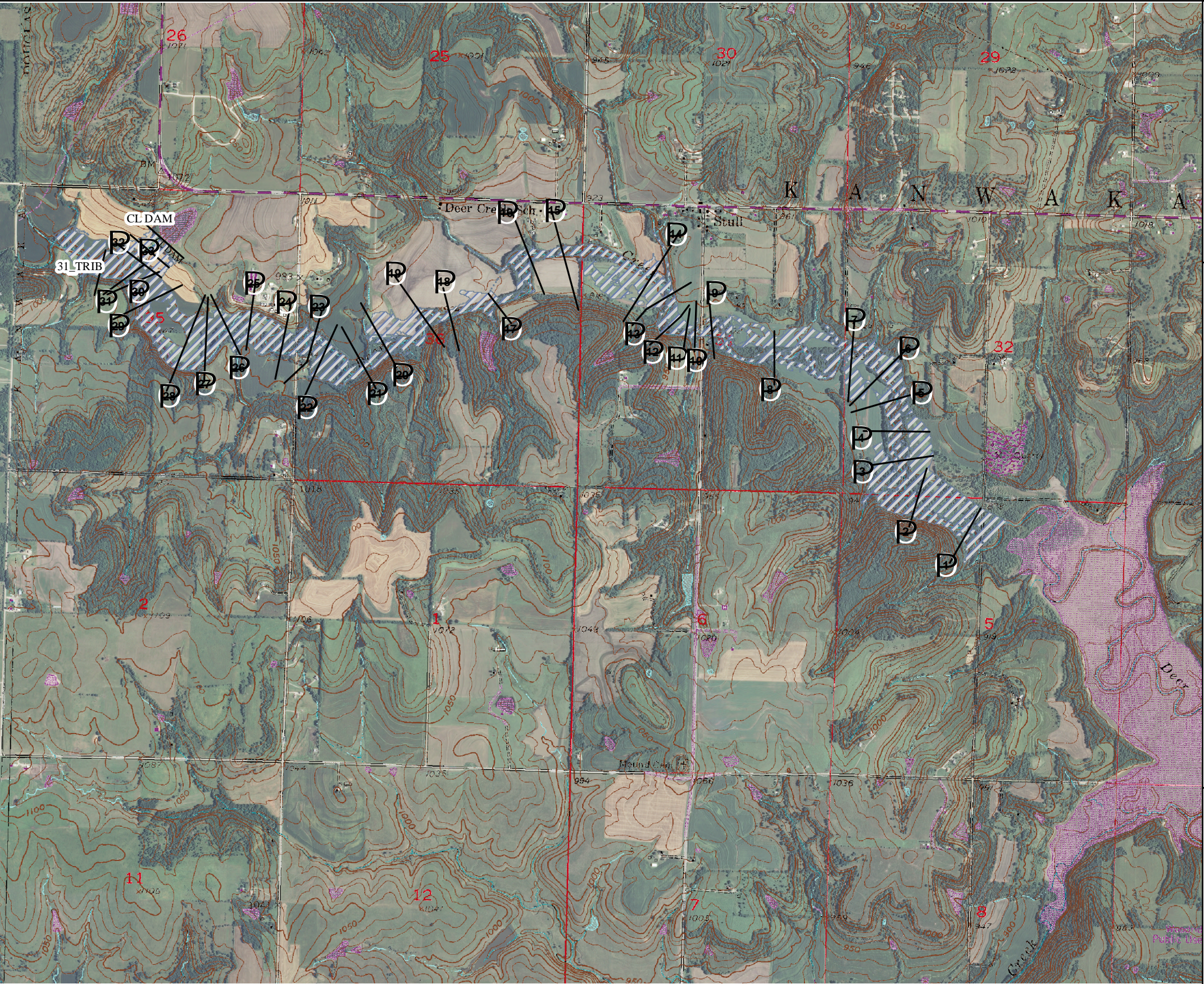


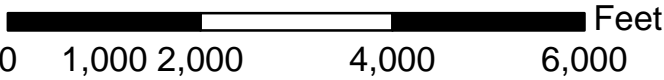
Section	HECRAS Station	Distance Downstream of Dam, ft	Max. Elev of Breach Flood	Elevation of Stream bed	Travel Time, hrs	Flow at Section # Peak Elev	Flow Top Width at Section # Peak Elev	Avg. Velocity at Section, ft/sec
CL Dam	DDG- 0229_1_1073	0	977.3	965.3	0.1	24.883	484	14.3
33	DDG- 0229_1_737	336	963.6	956.1	0.1	24.001	728	8.4
32	DDG- 0229_1_459	614	957.3	951.0	0.1	23.474	938	13.1
31	Deer Creek_3_26211	1,073	954.5	939.9	0.2	14.074	620	4.5
31_TRIB	DDG- 0173_1_492	1,565	954.7	941.3	0.2	-1,227	512	-0.5
30	Deer Creek_3_26063	1,221	954.1	939.4	0.2	13,374	505	4.2
29	Deer Creek_3_25618	1,665	952.3	939.4	0.2	12,057	678	5.7
28	Deer Creek_3_24193	3,091	946.2	938.1	0.3	9,243	952	3.2
27	Deer Creek_3_23605	3,678	944.3	935.3	0.3	6,669	874	2.2
26	Deer Creek_3_22833	4,451	943.0	932.9	0.4	5,905	887	2.3
25	Deer Creek_3_22262	5,021	941.7	931.9	0.4	4,836	598	2.2
24	Deer Creek_3_20677	6,606	936.6	925.9	0.5	4,607	470	3.2
23	Deer Creek_3_19704	7,580	931.8	921.8	0.5	4,551	324	5.2
22	Deer Creek_3_19378	7,906	930.7	920.0	0.6	4,116	718	1.9
21	Deer Creek_3_18167	9,117	927.4	918.1	0.6	3,872	141	5.2
20	Deer Creek_3_17550	9,734	925.8	915.0	0.7	3,579	620	2.7
19	Deer Creek_3_16129	11,155	923.8	912.8	0.8	3,131	419	2.2
18	Deer Creek_3_15540	11,743	922.9	912.7	0.8	3,046	145	3.9
17	Deer Creek_3_14650	12,634	921.4	909.1	0.9	2,901	266	2.5
16	Deer Creek_2_12833	14,450	912.6	902.0	1.0	2,845	256	3.0
15	Deer Creek_2_12147	15,137	910.4	900.0	1.0	2,810	164	4.4
14	Deer Creek_2_10332	16,952	902.6	894.7	1.2	2,669	717	2.3
13	Deer Creek_2_9807	17,477	901.0	892.7	0.0	2,608	460	3.2
12	Deer Creek_2_8990	18,293	897.6	888.9	1.3	2,578	458	2.9
11	Deer Creek_2_8565	18,719	895.8	886.9	1.3	2,570	212	5.4
10	Deer Creek_1_8391	18,893	895.1	886.4	1.3	2,576	249	5.2
9	Deer Creek_1_8068	19,216	894.1	884.9	1.3	2,555	340	3.3
8	Deer Creek_1_6497	20,786	890.1	882.5	1.5	2,390	345	2.5
7	Deer Creek_1_4133	23,150	886.7	876.6	1.7	2,118	1,032	1.7
6	Deer Creek_1_3067	24,216	885.7	877.1	1.8	2,025	739	2.5
5	Deer Creek_1_2502	24,782	884.9	876.6	1.8	1,974	494	1.9
4	Deer Creek_1_1729	25,554	884.0	877.0	2.0	1,769	663	1.4
3	Deer Creek_1_1070	26,214	883.7	876.0	2.0	1,619	1,082	0.7
2	Wakarusa River_9_23211	27,284	882.2	876.5	2.2	1,473	819	1.2
1	Wakarusa River_9_22090	28,404	881.3	876.5	2.4	1,377	664	1.3

\* Travel time is measured from the initiation of breach formation to the time the breach wave arrives at the section.

The inundation area was developed based on a breach with the water surface at the Top of Dam elevation. Cross Sections were developed using 2-meter LIDAR data.



1:24,000



Attachment 1:  
Inundation Area  
Boundary Map

REVISIONS		
DATE	APPROVED	TITLE



File Name
Drawing Name
07/01/2009
Sheet 1 of 1

DDG-0229 NID-KS04078  
DOUGLAS COUNTY, KANSAS

Designed	EWR	Date	06/20/09
Drawn	DMM	Date	07/01/2009
Checked	JW	Date	06/20/09
Approved	AGB	Date	06/20/09