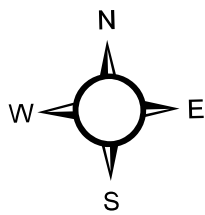
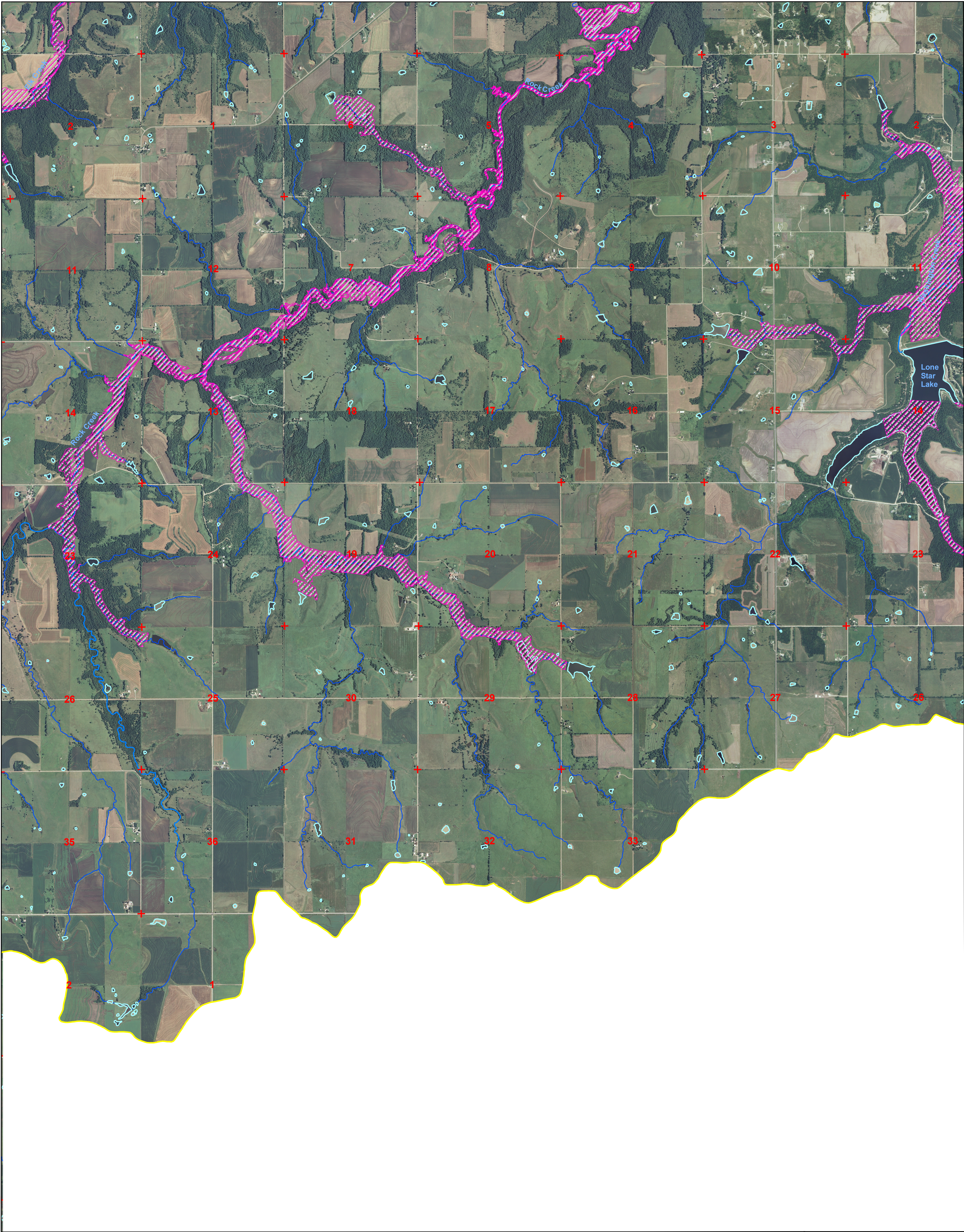


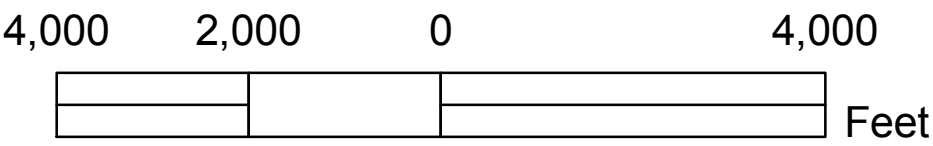
# Dam Breach Inundation Map

## Douglas County, Kansas - Wakarusa Watershed

### Panel 5 of 8



1 inch equals 2,000 feet



The Inundation areas depicted on this map represent the extent of all individual breach routes during a breach event. The inundation area depicts the largest inundation area from one individual breach event. Accumulation from multiple simultaneous breach events are not accounted for on this map.

Inundation areas were developed using the 2 meter Digital Elevation Models derived from the Kansas 2006 LIDAR collection and the High Resolution National Hydrography Dataset for Kansas. Inundation areas were developed using ArcGIS9.1 software with Hec-GeoRas 4.1.1 and Hec-Ras 4.0 software.

### Legend

Globe 24k Quad Boundary

Wakarusa Watershed Boundary

Public Land Survey System

Dam Breach Inundation Areas

### Hydrography

Perennial

Intermittent

Shoreline

Pipeline

Canal

