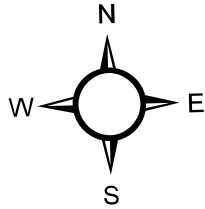
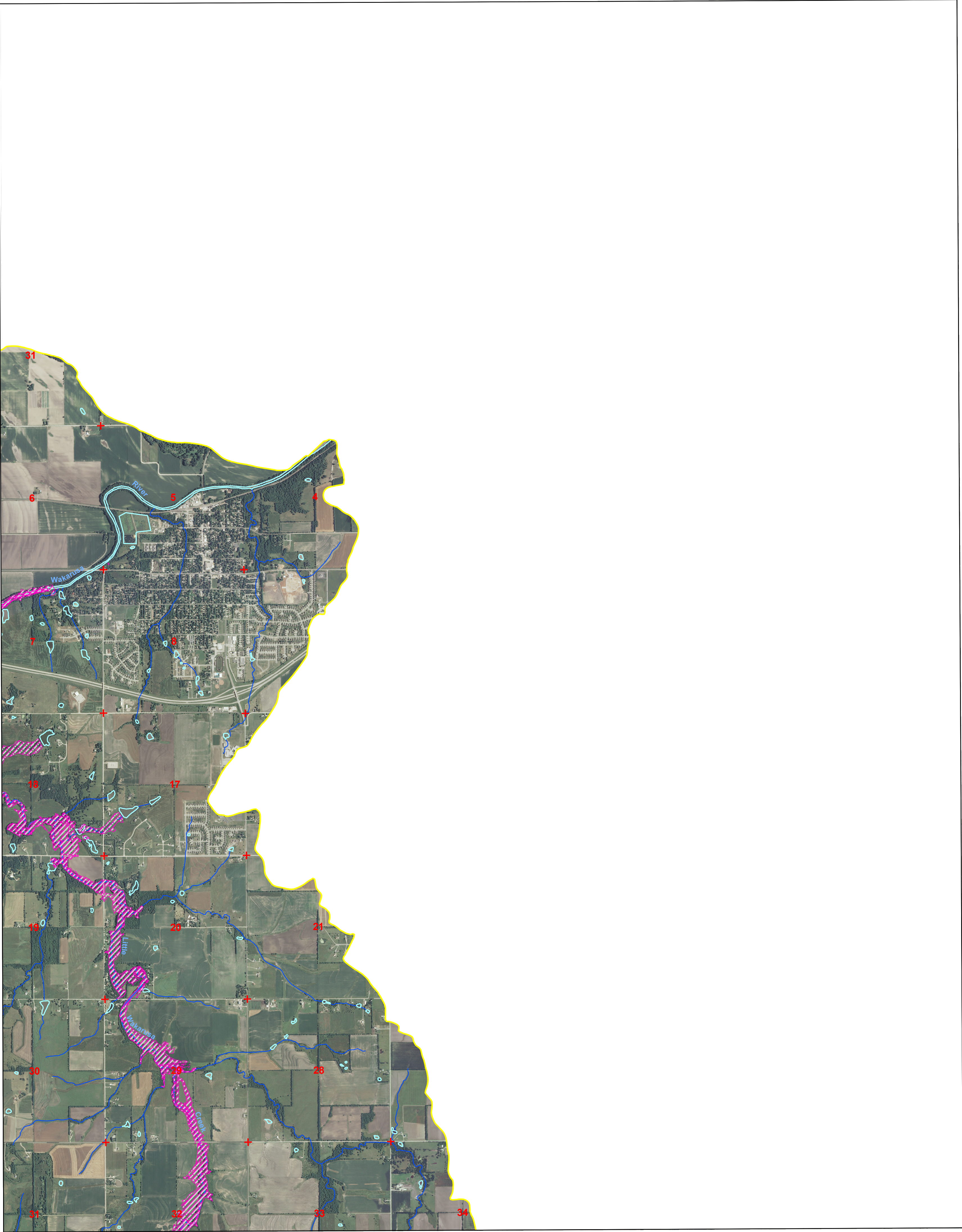


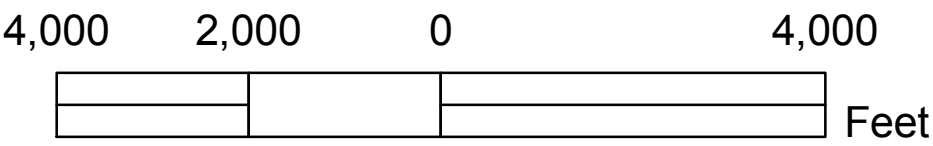
Dam Breach Inundation Map

Douglas County, Kansas - Wakarusa Watershed

Panel 4 of 8



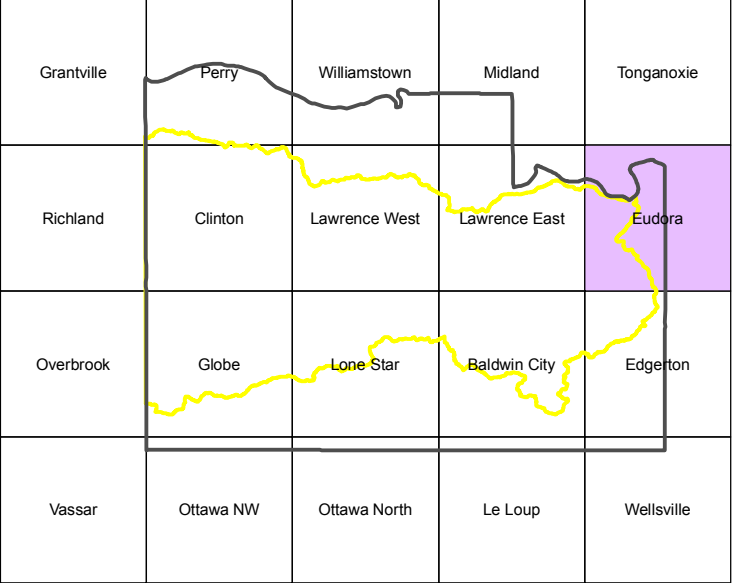
1 inch equals 2,000 feet



The Inundation areas depicted on this map represent the extent of all individual breach routes during a breach event. The inundation area depicts the largest inundation area from one individual breach event. Accumulation from multiple simultaneous breach events are not accounted for on this map.

Inundation areas were developed using the 2 meter Digital Elevation Models derived from the Kansas 2006 LIDAR collection and the High Resolution National Hydrography Dataset for Kansas. Inundation areas were developed using ArcGIS9.1 software with Hec-GeoRas 4.1.1 and Hec-Ras 4.0 software.

Panel Location



Legend

- Eudora 24k Quad Boundary

Wakarusa Watershed Boundary

Public Land Survey System

Dam Breach Inundation Areas
- Perennial

Intermittent

Shoreline

Pipeline

Canal