

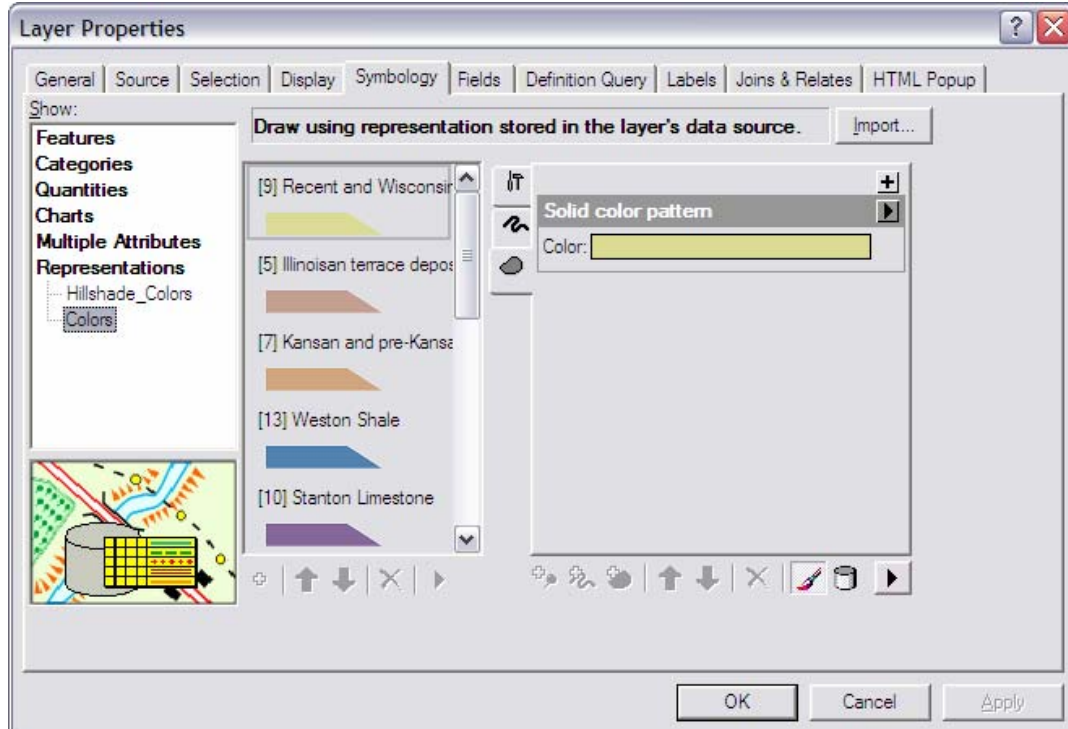
Using the KGS Historical County Geology Data

Software requirements: Personal geodatabases – ArcGIS 9.2+. For all other software, including earlier versions of ArcGIS, download the shapefile versions of the data (ArcGIS 9.2 geodatabases are not compatible with earlier versions of ArcGIS).

Font: To properly display the geologic symbology used in the data attribute tables, use the GeoAgeKGS font, which can be downloaded from the same directory as the data (GEOAGE_KGS.ZIP). Unzip the file and install the font by copying GEOAGE_KGS.TTF to the **C:\Windows\Fonts** directory. Pasting the file into this directory will install the font – you should briefly see an installation status bar immediately after pasting the file here. In both ArcGIS and ArcCatalog, select **Options** from the **Tools** pulldown menu, then click on the **Tables** tab. Select **GeoAgeKGS** as the table font from the pulldown menu of loaded fonts. This will now be your default table font.

Cartographic representations: Cartographic representations have been created for all feature classes in the county personal geodatabases. These representations allow the data user to set polygon and line colors and line symbology to match that used by the KGS Cartographic Services unit, especially the new standardized statewide geologic color scheme. The geology polygon feature classes include two representations – one for display with no background, and the other for use with a hillshade, to be displayed over the hillshade at 30% transparency.

To display the county geology data using cartographic representations, right-click on the layer in ArcGIS in the window listing the layers, then select **Properties**. Click on the **Symbology** tab, then click on the word **Representations** at the bottom of the list, and select your representation choice. Note that by choosing the representation, you choose all the colors together – changes to individual units/categories are not allowed when a representation is used, unless the representation itself is edited.



If you want to use the KGS color scheme with shapefiles, you can do so in ArcGIS by installing **KGS_Symbology.style** (available for download with the shapefiles) and setting the geology polygons to the color with that geology name from your polygon fill choices. To install the style, copy the file to your style directory, which is normally **C:\Program Files\ArcGIS\Styles**.