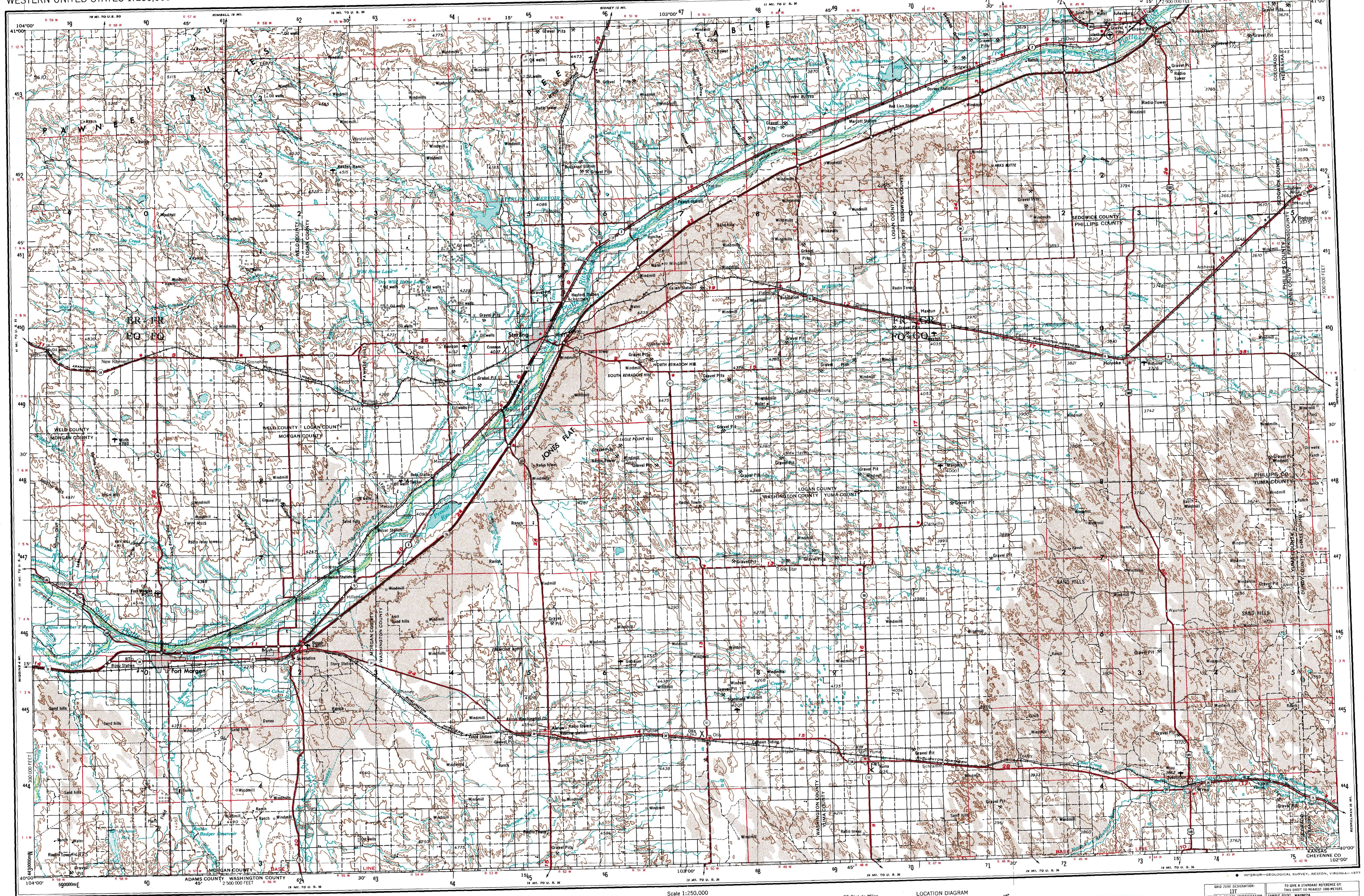


WESTERN UNITED STATES 1:250,000

STERLING



Prepared by the U.S. Army Topographic Command (BET), Washington, D.C. Compiled in 1955 by photogrammetric methods and from USGS quadrangles 1:24,000, 1951-1953. Photographs field annotated 1954. Revised by the U.S. Geological Survey in 1976 from aerial photographs taken 1973. 100,000-foot grid based on Colorado coordinate system north zone. Area covered by dashed light-blue pattern is subject to controlled inundation. Location of geodetic control established by government agencies is shown on corresponding 1:250,000-scale Geodetic Control Diagram.

LEGEND

Figures in red denote approximate distances in miles between stars

POPULATED PLACES

Over 500,000
100,000 to 500,000
25,000 to 100,000
5,000 to 25,000
1,000 to 5,000
Less than 1,000

ROADS

Primary, all-weather, hard surface
Secondary, all-weather, hard surface
Light-duty, all-weather, hard or improved surface
Fair or dry weather, unimproved surface
Trail
Interchange

RAILROADS

Single track double or multiple
Normal gauge
Narrow gauge

BOUNDARIES

International
State
County
Park or reservation

Other Features

Landplane airport
Landing area
Seaplane airport
Seaplane anchorage
Woods-brushwood
Windmill; Mine
Landmark: School; Church; Other
Spot elevation in feet
Spot elevation in feet
Marsh or swamp
Intermittent or dry stream
Power line

Scale 1:250,000

0 5 10 15 20 25 30 Statute Miles

0 5 10 15 20 25 30 Kilometers

0 5 10 15 20 25 30 Nautical Miles

CONTOUR INTERVAL 100 FEET
WITH SUPPLEMENTARY CONTOURS AT 50 FOOT INTERVALS
TRANSVERSE MERCATOR PROJECTION

BLACK NUMBERED LINES INDICATE THE 30,000 METER UNIVERSAL TRANSVERSE MERCATOR GRID, ZONE 13

1975 MAGNETIC DECLINATION FROM TRUE NORTH VARIES FROM 12° 42' W. TO 12° 00' W. EASTERN FOR THE CENTER OF THE WEST EDGE TO 11° 00' W. EASTERN FOR THE CENTER OF THE EAST EDGE

FOR SALE BY U.S. GEOLOGICAL SURVEY, DENVER, COLORADO 80225, OR RESTON, VIRGINIA 22092

LOCATION DIAGRAM

13-10	13-11	13-12	13-13	13-14
13-15	13-16	13-17	13-18	13-19
13-20	13-21	13-22	13-23	13-24
13-25	13-26	13-27	13-28	13-29
13-30	13-31	13-32	13-33	13-34

SECTIONIZED TOWNSHIP

6	5	4	3	2	1
7	8	9	10	11	12
13	14	15	16	17	18
19	20	21	22	23	24
25	26	27	28	29	30
31	32	33	34	35	36

GRID ZONE DESIGNATION

13-12

TO GIVE A STANDARD REFERENCE ON THIS SHEET TO WATER 100 FEET

SAMPLE POINT: MAINNETA

1. Read letters identifying 100,000 meter square in which the point lies.
2. Locate first vertical grid line to left of point and read LARGE figure labeling the line within the top of the column range, or on the line itself.
3. Estimate number from grid line to point.
4. Locate first horizontal grid line below point and read LARGE figure labeling the line within the left of the range, or on the line itself.
5. Estimate number from grid line to point.

SAMPLE REFERENCE

If reporting beyond 20" in any direction, prefix Grid Zone Designation, e.g.:
420000

117003303

STERLING, COLORADO; NEBRASKA; KANSAS
1954
REVISED 1976