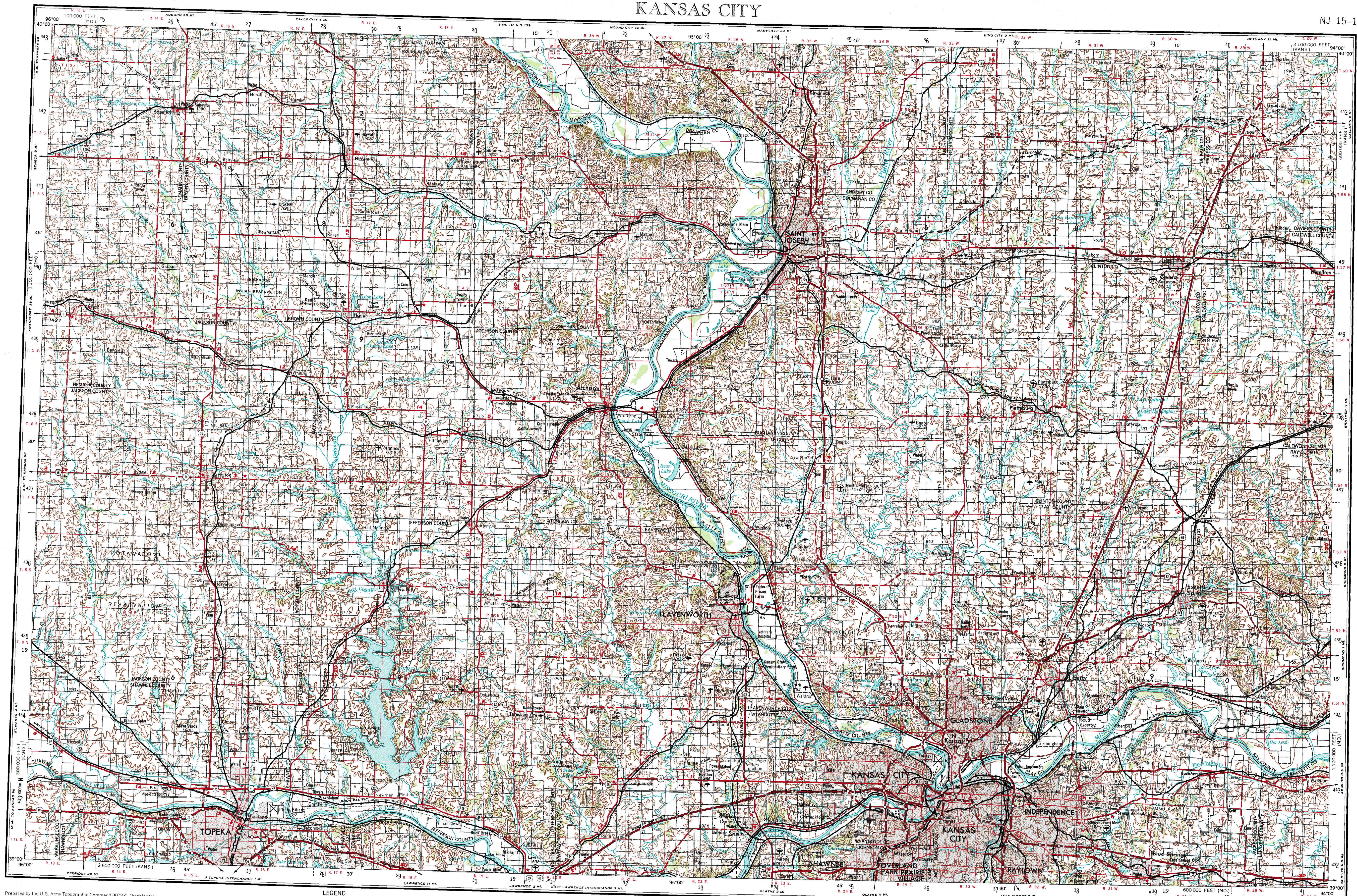


KANSAS CITY



Prepared by the U.S. Army Topographic Command (KCS), Washington, D.C. Compiled in 1955 by photogrammetric methods and from United States quadrangles 1:62,500 and 1:100,000, 1922-51. Planimetry revised from aerial photographs taken 1951-52. Map first checked 1956. Revised in 1974 by the U.S. Geological Survey from aerial photographs taken 1973.

Area covered by dashed light-blue pattern is subject to controlled inundation.

100,000-foot grid based on Kansas coordinate system, north zone, and Missouri coordinate system, west zone.

Location of geodetic control established by government agencies is shown on corresponding 1:250,000-scale Geodetic Control Diagram.

