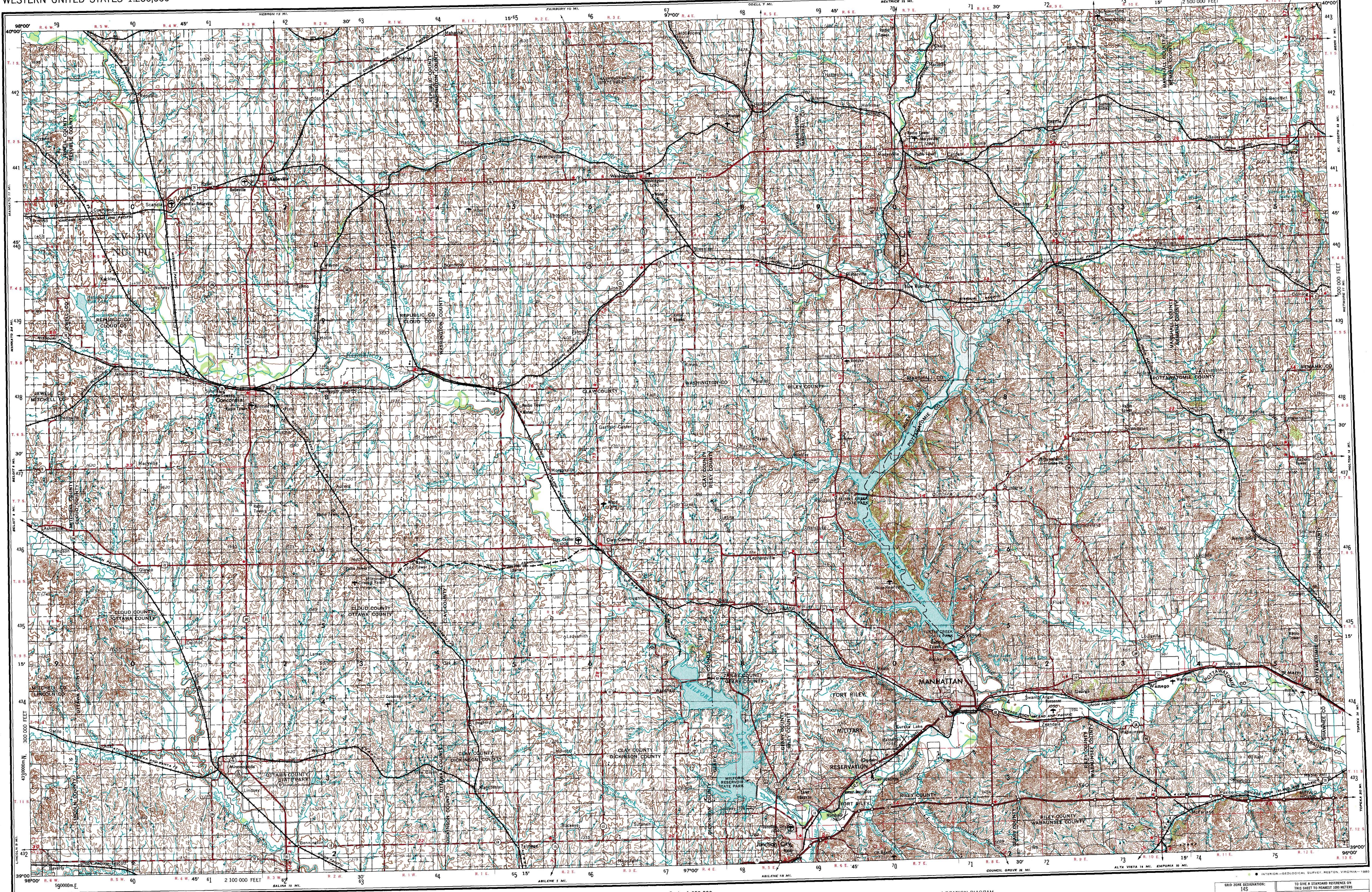


WESTERN UNITED STATES 1:250,000

MANHATTAN



Prepared by the U.S. Army Topographic Command (ASTC), Washington, D.C. Compiled in 1955 by photogrammetric methods and from United States quadrangles, 1:25,000, 1949. Planimetry revised from aerial photographs taken 1954. Photographs field annotated 1955. Revised by the U.S. Geological Survey, 1969.

Transverse Mercator Projection, 10,000-meter Universal Transverse Mercator grid, zone 14, 100,000-foot grid ticks based on Kansas north coordinate system, 1927 North American datum. To place on the predicted North American Datum 1983 move the projection lines 3 meters north and 26 meters west.

Areas covered by dashed light-blue pattern are subject to controlled inundation.

Location of geodetic control established by government agencies is shown on corresponding 1:250,000-scale Geodetic Control Diagram.

There may be private inholding within the boundaries of National or State reservations shown on this map.

LEGEND

Figures in red denote approximate distances in miles between stars.

POPULATED PLACES

Over 500,000
100,000 to 500,000
25,000 to 100,000
5,000 to 25,000
1,000 to 5,000
Less than 1,000

ROADS

Primary, all-weather, hard surface
Secondary, all-weather, hard surface
Light-duty, all-weather, hard or improved surface
Fair or dry weather, unimproved surface
Trail

RAILROADS

Single track
Double or multiple track
Standard gauge
Narrow gauge
Interchange

BOUNDARIES

International
State
County
Park or reservation

Other features:

Landplane airport
Landing area
Seaplane airport
Seaplane anchorage
Woods-brushwood
Mine
Landmark: School; Church; Other
Spot elevation in feet
Marsh or swamp
Intermittent or dry stream
Power line

ROUTE MARKERS: Interstate, U.S., State

Scale 1:250,000

0 5 10 15 20 25 30 Kilometers

0 5 10 15 20 25 30 Statute Miles

0 5 10 15 20 25 30 Nautical Miles

CONTOUR INTERVAL 50 FEET

1965 MAGNETIC DECLINATION FROM TRUE NORTH VARIES FROM 9°N (170 MILS) EASTERLY FOR THE CENTER OF THE WEST EDGE TO 8°N (150 MILS) EASTERLY FOR THE CENTER OF THE EAST EDGE

FOR SALE BY U.S. GEOLOGICAL SURVEY, DENVER, COLORADO 80225, OR RESTON, VIRGINIA 22092

LOCATION DIAGRAM

NK 14-7 NORTH PLATTE	NK 14-8 NEBASKA	NK 14-9 NEBASKA	NK 15-7 NEBASKA	NK 15-8 NEBASKA
NK 14-10 NEBASKA	NK 14-11 NEBASKA	NK 14-12 NEBASKA	NK 15-10 NEBASKA	NK 15-11 NEBASKA
NK 14-1 NEBASKA	NK 14-2 NEBASKA	NK 14-3 NEBASKA	NK 15-1 NEBASKA	NK 15-2 NEBASKA
SCOTT CITY NJ 14-4	NJ 14-5 NEBASKA	NJ 14-6 NEBASKA	NJ 15-4 NEBASKA	NJ 15-5 NEBASKA
DODGE CITY NJ 14-7	NJ 14-8 NEBASKA	NJ 14-9 NEBASKA	NJ 15-7 NEBASKA	NJ 15-8 NEBASKA

SECTIONIZED TOWNSHIP

6	5	4	3	2	1
18	17	16	15	14	13
19	20	21	22	23	24
30	29	28	27	26	25
31	32	33	34	35	36

GRID ZONE DESIGNATION

14S

TO GIVE A STANDARD REFERENCE ON THIS SHEET TO NEAREST 1000 METERS

SAMPLE POINT: BAND

NV	PV	QV
NU	PU	QU

1. Band letters identify 100,000 meter squares in which the point lies.
2. Locate first VERTICAL grid line to LEFT of point and read LARGE figure labeling the line either in the top or bottom margin, or on the line itself.
3. Estimate tenths from grid line to point.
4. Locate first HORIZONTAL grid line below point and read LARGE figure labeling the line either in the left or right margin, or on the line itself.
5. Estimate tenths from grid line to point.

SAMPLE REFERENCE

1. If reporting beyond 18° in any direction, prefix Grid Zone Designation, as: 14SP08U74

MANHATTAN, KANSAS

1955