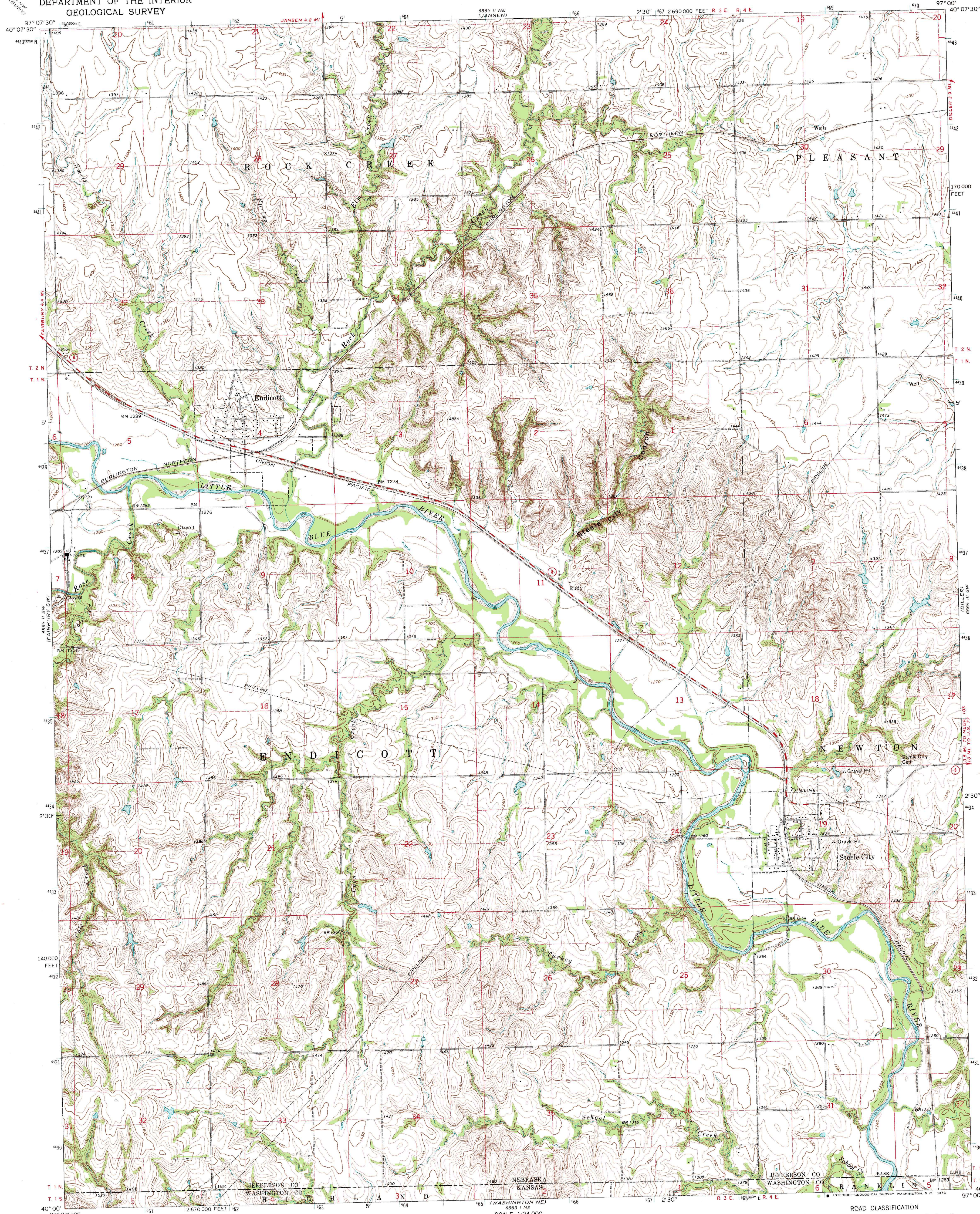


UNITED STATES  
DEPARTMENT OF THE INTERIOR  
GEOLOGICAL SURVEY

ENDICOTT QUADRANGLE  
NEBRASKA-KANSAS  
7.5 MINUTE SERIES (TOPOGRAPHIC)



Maped, edited, and published by the Geological Survey as part of the Department of the Interior program for the development of the Missouri River Basin Control by USGS and USCGS

Topography by photogrammetric methods from aerial photographs taken 1967. Field checked 1970

Polyconic projection, 1927 North American datum 10,000-foot grid based on Nebraska coordinate system, south zone 1000-meter Universal Transverse Mercator grid ticks, zone 14, shown in blue

Fine red dashed lines indicate selected fence and field lines where generally visible on aerial photographs. This information is unchecked

SCALE 1:24 000

1 MILE

1 KILOMETER

CONTOUR INTERVAL 10 FEET

DATUM IS MEAN SEA LEVEL

THIS MAP COMPLIES WITH NATIONAL MAP ACCURACY STANDARDS

FOR SALE BY U.S. GEOLOGICAL SURVEY, DENVER, COLORADO 80225, OR WASHINGTON, D. C. 20242

AND BY THE STATE GEOLOGICAL SURVEY, LAWRENCE, KANSAS 66044

A FOLDER DESCRIBING TOPOGRAPHIC MAPS AND SYMBOLS IS AVAILABLE ON REQUEST

ROAD CLASSIFICATION

Secondary highway, all weather, Light-duty road, all weather, hard surface

Unimproved road, fair or dry weather

State Route



ENDICOTT, NEBR.-KANS.

N4000-W9700/7.5

1970

AMS 6564 II SE SERIES V875