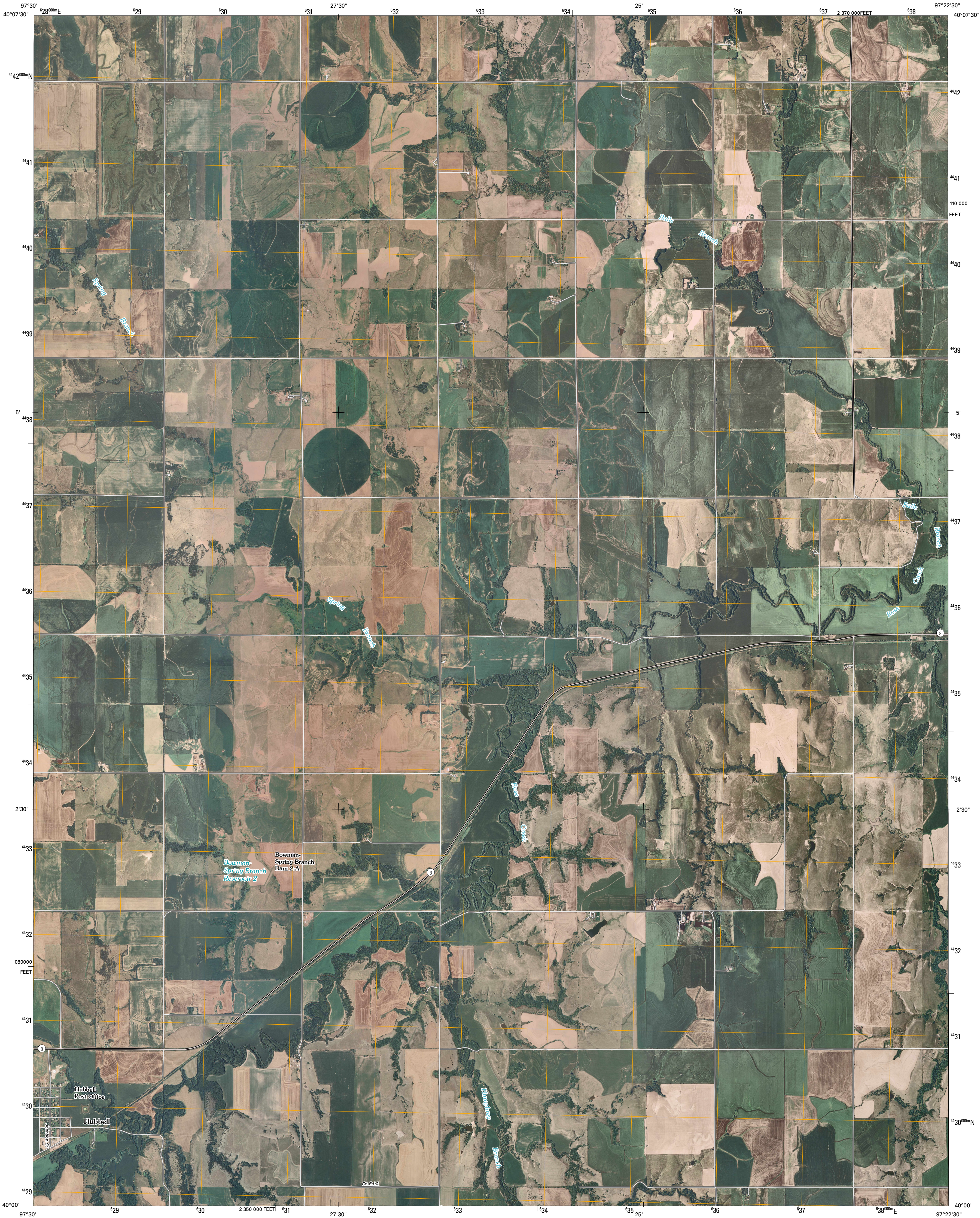




U.S. DEPARTMENT OF THE INTERIOR  
U. S. GEOLOGICAL SURVEY

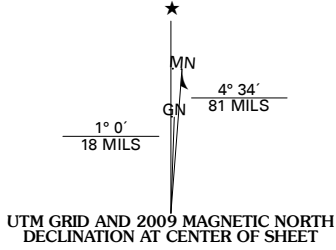


HUBBELL QUADRANGLE  
NEBRASKA-KANSAS  
7.5-MINUTE SERIES

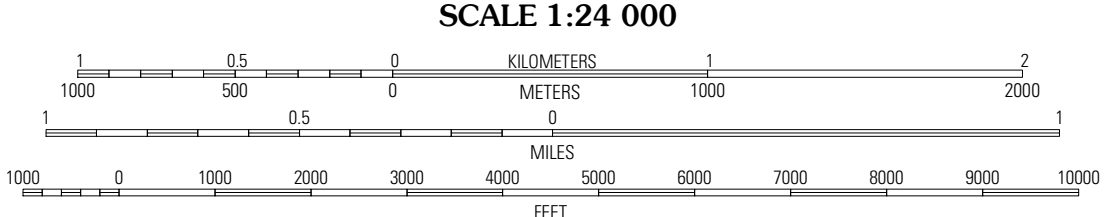


Produced by the United States Geological Survey  
North American Datum of 1983 (NAD83)  
World Geodetic System of 1984 (WGS84). Projection and  
1 000-meter grid: Universal Transverse Mercator, Zone 14T  
10 000-foot ticks: Nebraska Coordinate System of 1983

Imagery.....NAIP, July 2006 - July 2008  
Roads.....National Transportation Dataset, 2005 - 2006  
Names.....GNIS, 2008



U.S. National Grid
100,000-m Square ID
PK
Grid Zone Designation
14T

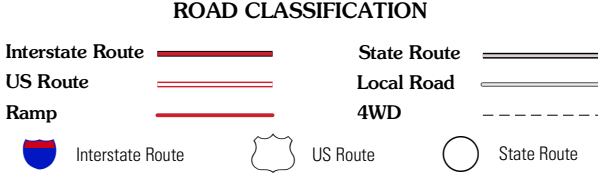


This map was produced to conform with version 0.0.25 of the  
draft USGS Standards for 7.5-Minute Quadrangle Maps.  
A metadata file associated with this product is also draft version 0.0.25



QUADRANGLE LOCATION		
Hebron	Alexandria	Gladstone
Chester	Hubbell	Reynolds
Munden	Nanka	Mahaska

ADJOINING 7.5' QUADRANGLES



HUBBELL, NE-KS  
2009