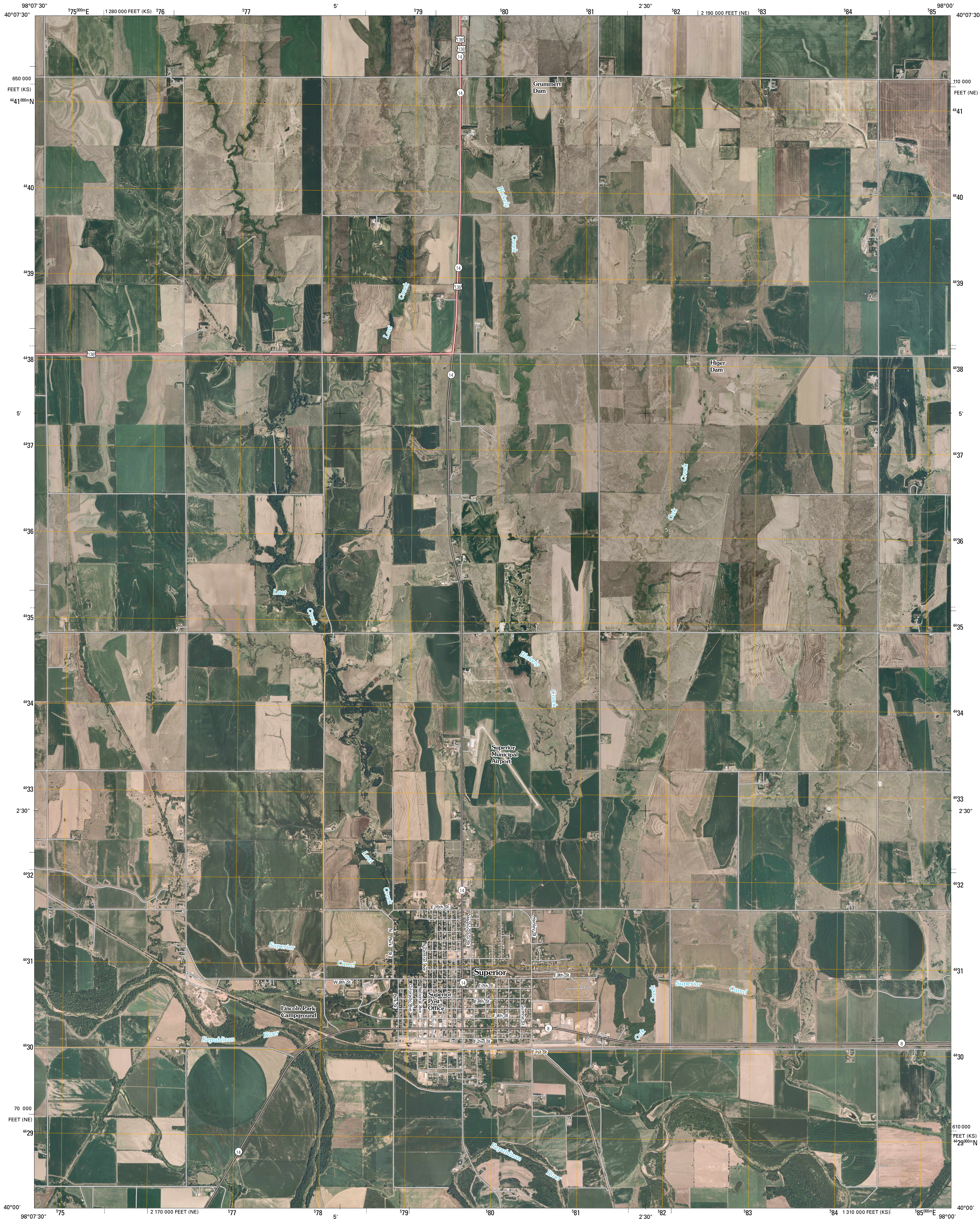




U.S. DEPARTMENT OF THE INTERIOR
U. S. GEOLOGICAL SURVEY

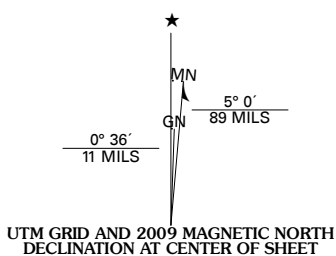


SUPERIOR QUADRANGLE
NEBRASKA-KANSAS
7.5-MINUTE SERIES



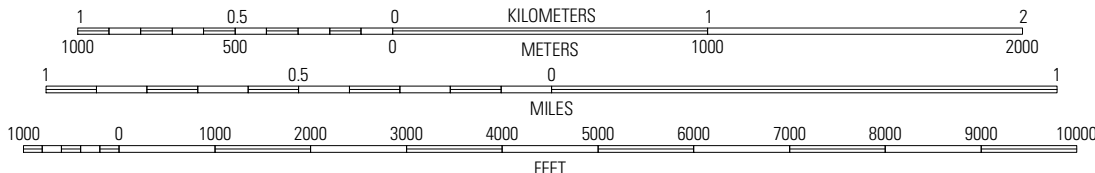
Produced by the United States Geological Survey
North American Datum of 1983 (NAD83)
World Geodetic System of 1984 (WGS84). Projection and
1 000-meter grid: Universal Transverse Mercator, Zone 14T
10 000-foot ticks: Nebraska Coordinate System of 1983
and Kansas Coordinate System of 1983
(north zone)

Imagery.....NAIP, July 2006 - July 2008
Roads.....National Transportation Dataset, 2005 - 2006
Names.....GNIS, 2008



U.S. National Grid
100,000-m Square ID
NK
Grid Zone Designation
14T

SCALE 1:24 000

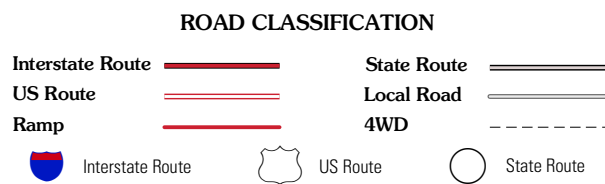


This map was produced to conform with version 0.0.25 of the
draft USGS Standards for 7.5-Minute Quadrangle Maps.
A metadata file associated with this product is also draft version 0.0.25



QUADRANGLE LOCATION		
Mount Clare	Nelson	Oak
Bostwick	Superior	Hardy
Mankato NW	Webber	Scandia NW

ADJOINING 7.5' QUADRANGLES



SUPERIOR, NE-KS
2009