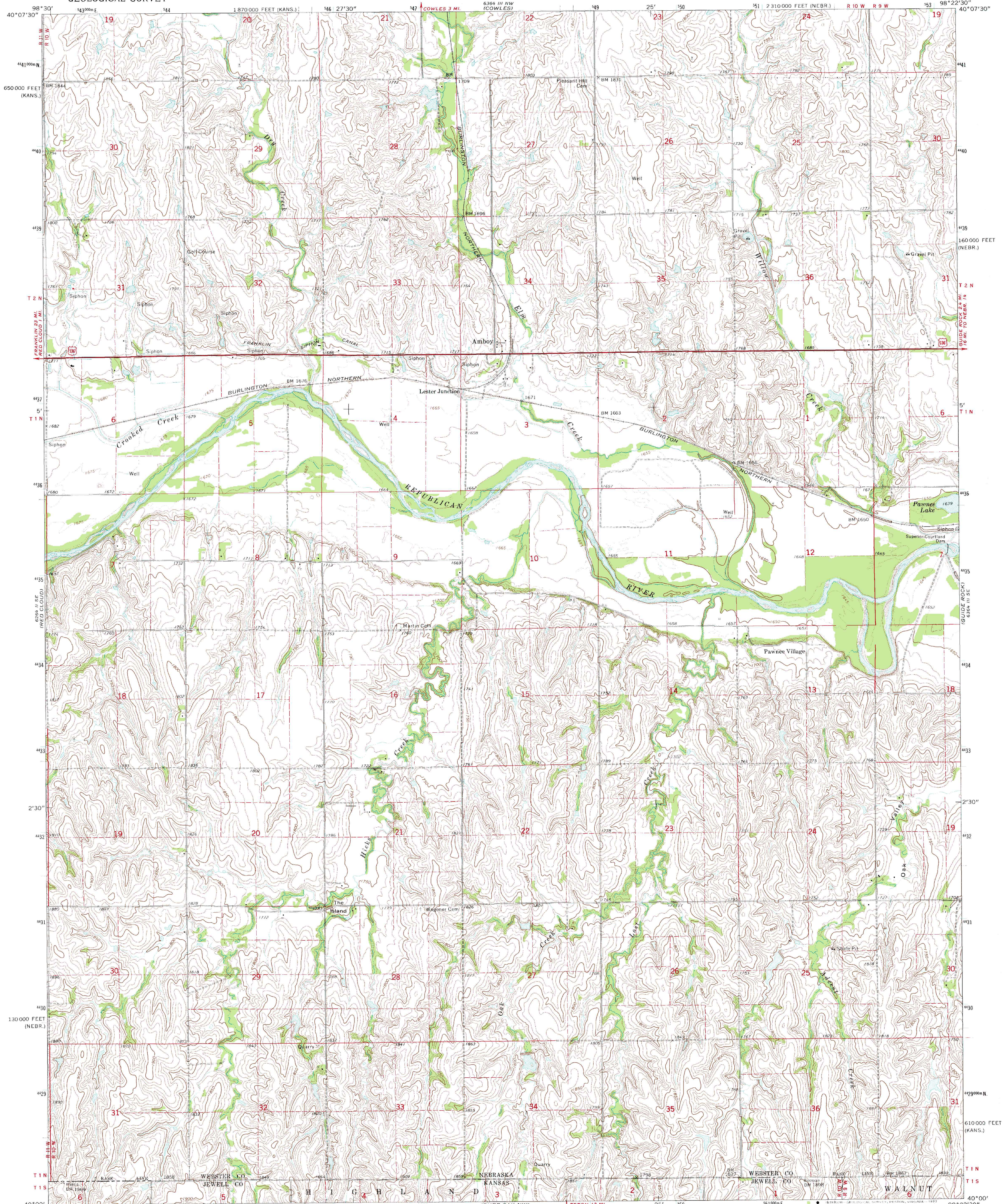
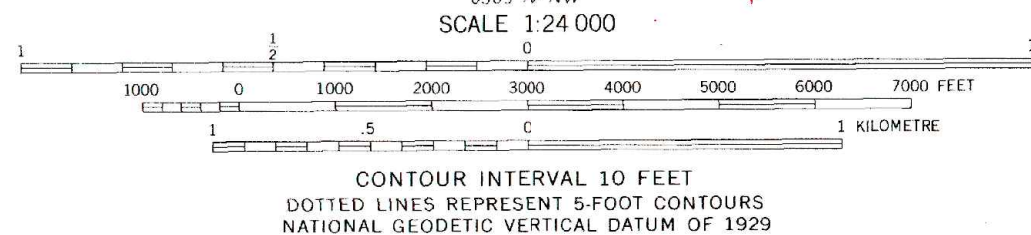
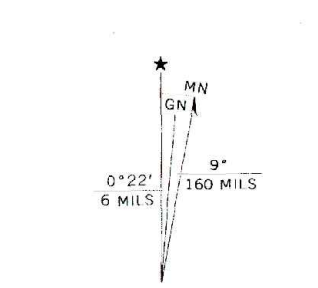


UNITED STATES  
DEPARTMENT OF THE INTERIOR  
GEOLOGICAL SURVEY

AMBOY QUADRANGLE  
NEBRASKA—KANSAS  
7.5 MINUTE SERIES (TOPOGRAPHIC)



Mapped, edited, and published by the Geological Survey  
Control by USGS and NOS/NOAA  
Topography of Nebraska area by photogrammetric methods from  
aerial photographs taken 1973. Field checked 1974  
Topography of Kansas area by photogrammetric methods from  
aerial photographs taken 1967. Revised from aerial photographs  
taken 1973. Field checked 1974  
Projection: Nebraska coordinate system, south zone  
(Lambert conformal conic)  
10,000-foot grid ticks based on Nebraska coordinate  
system, south zone, and Kansas coordinate system, north zone  
1000-metre Universal Transverse Mercator grid ticks,  
zone 14, shown in blue. 1927 North American datum  
Fine red dashed lines indicate selected fence and field lines where  
generally visible on aerial photographs. This information is unchecked



ROAD CLASSIFICATION  
Primary highway, hard surface  
Secondary highway, hard surface  
Light-duty road, hard or improved surface  
Unimproved road  
Interstate Route  
U.S. Route  
State Route

THIS MAP COMPLIES WITH NATIONAL MAP ACCURACY STANDARDS  
FOR SALE BY U.S. GEOLOGICAL SURVEY, DENVER, COLORADO 80225, OR RESTON, VIRGINIA 22092  
AND STATE GEOLOGICAL SURVEY, LAWRENCE, KANSAS 66044  
A FOLDER DESCRIBING TOPOGRAPHIC MAPS AND SYMBOLS IS AVAILABLE ON REQUEST

AMBOY, NEBR.—KANS.  
N4000—W9822.5/7.5

1974

AMS 6364 III SW—SERIES V875