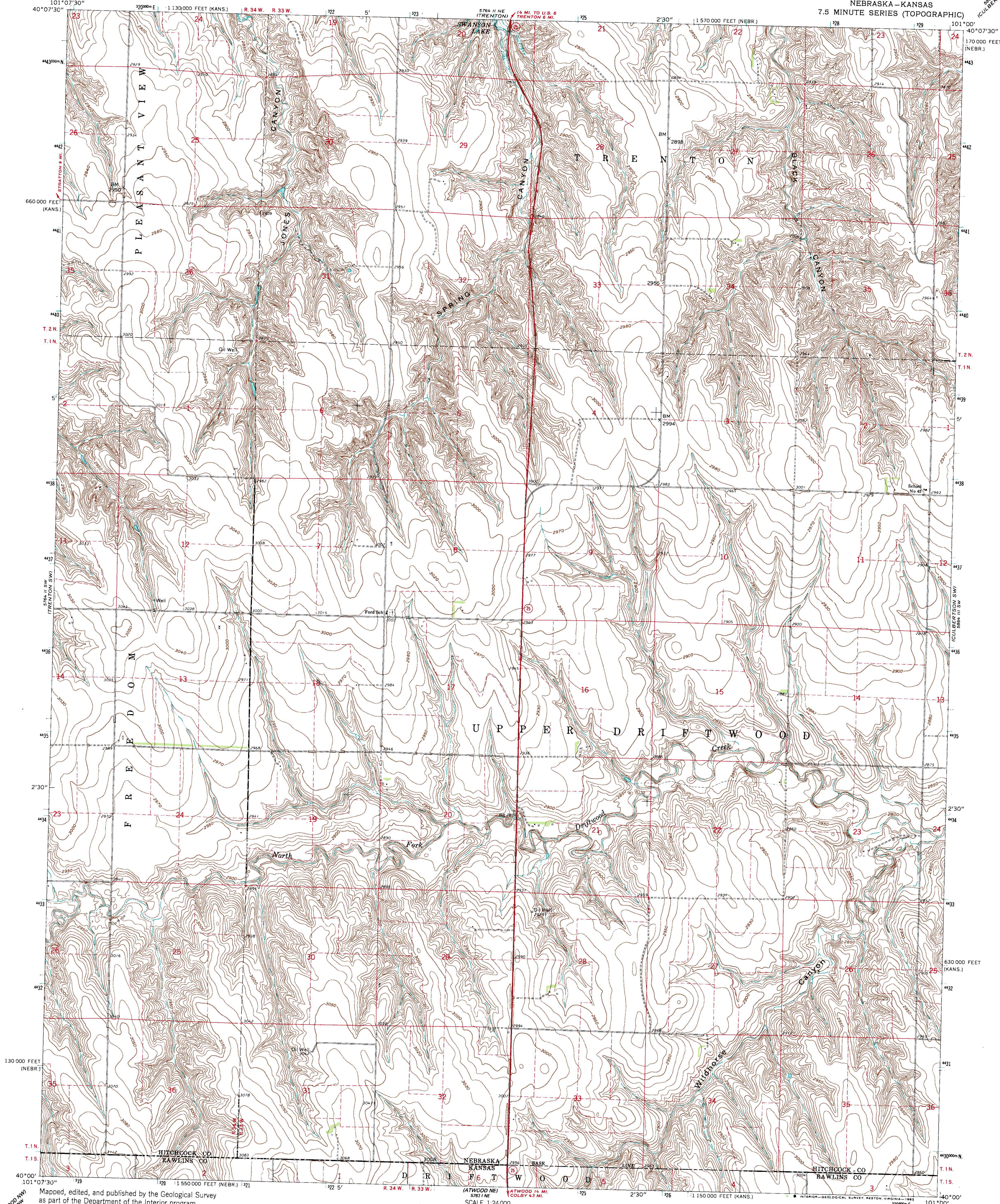


UNITED STATES  
DEPARTMENT OF THE INTERIOR  
GEOLOGICAL SURVEY

TRENTON SE QUADRANGLE  
NEBRASKA-KANSAS  
7.5 MINUTE SERIES (TOPOGRAPHIC)



Mapped, edited, and published by the Geological Survey as part of the Department of the Interior program for the development of the Missouri River Basin Control by USGS and USC&GS

Topography by photogrammetric methods from aerial photographs taken 1960. Field checked 1962

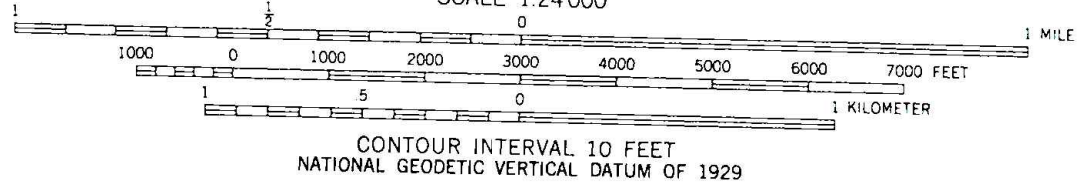
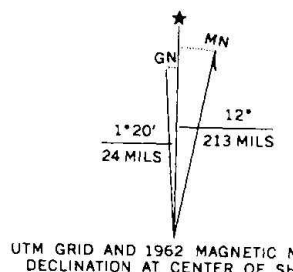
Polyconic projection. 1927 North American datum 10,000-foot grids based on Nebraska coordinate system, south zone and Kansas coordinate system, north zone 1000-meter Universal Transverse Mercator grid ticks, zone 14, shown in blue

To place on the predicted North American Datum 1983, move the projection lines 4 meters north and 37 meters east as shown by dashed corner ticks

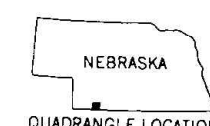
Map photoinspected 1976

No major culture or drainage changes observed

Area covered by dashed light-blue pattern is subject to controlled inundation. Dashed blue line at elevation 2785 indicates areas subject to infrequent inundation



THIS MAP COMPLIES WITH NATIONAL MAP ACCURACY STANDARDS FOR SALE BY U.S. GEOLOGICAL SURVEY, DENVER, COLORADO 80225, OR RESTON, VIRGINIA 22082 AND KANSAS GEOLOGICAL SURVEY, LAWRENCE, KANSAS 66044 A FOLDER DESCRIBING TOPOGRAPHIC MAPS AND SYMBOLS IS AVAILABLE ON REQUEST



ROAD CLASSIFICATION  
Heavy-duty ——— Light-duty ———  
Unimproved dirt ———  
State Route —○—

TRENTON SE, NEBR.-KANS.  
N4000—W10100/7.5

1962  
PHOTOINSPECTED 1976  
AMS 5764 II SE—SERIES V875