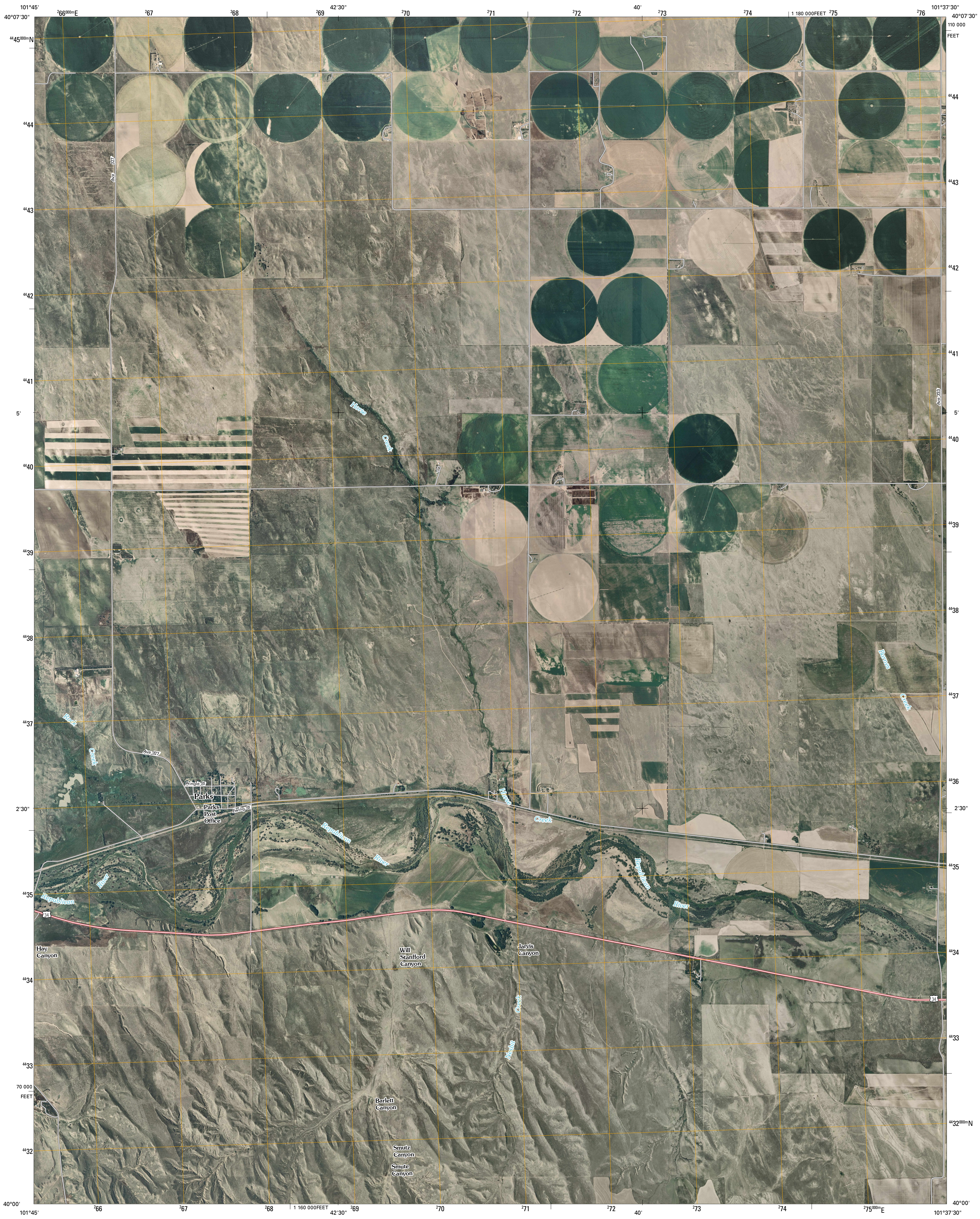




U.S. DEPARTMENT OF THE INTERIOR  
U. S. GEOLOGICAL SURVEY

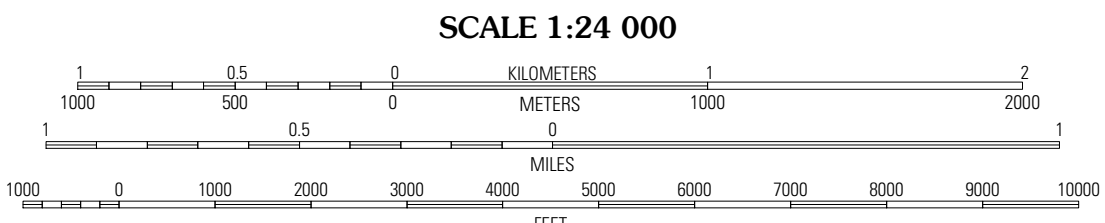
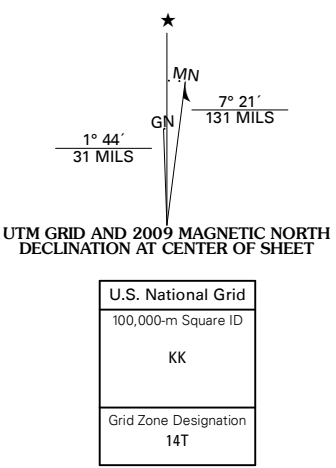


PARKS QUADRANGLE  
NEBRASKA-KANSAS  
7.5-MINUTE SERIES



Produced by the United States Geological Survey  
North American Datum of 1983 (NAD83)  
World Geodetic System of 1984 (WGS84). Projection and  
1 000-meter grid: Universal Transverse Mercator, Zone 14T  
10 000-foot ticks: Nebraska Coordinate System of 1983  
and Kansas Coordinate System of 1983  
(north zone)

Imagery.....NAIP, July 2006 - July 2008  
Roads.....National Transportation Dataset, 2005  
Names.....GNIS, 2008

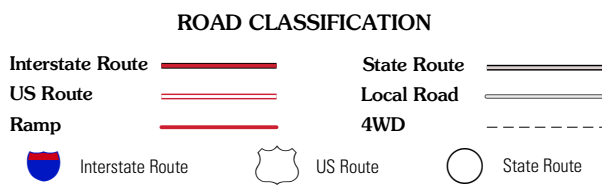


This map was produced to conform with version 0.0.25 of the  
draft USGS Standards for 7.5-Minute Quadrangle Maps.  
A metadata file associated with this product is also draft version 0.0.25



QUADRANGLE LOCATION			
Haigler NE	Benkelman NW	Arrowhead Lake	
Rock Creek Lake	Parks	Benkelman	
White Canyon	Heinzelman Canyon	Henkle Canyon	

ADJOINING 7.5' QUADRANGLES



PARKS, NE-KS  
2009