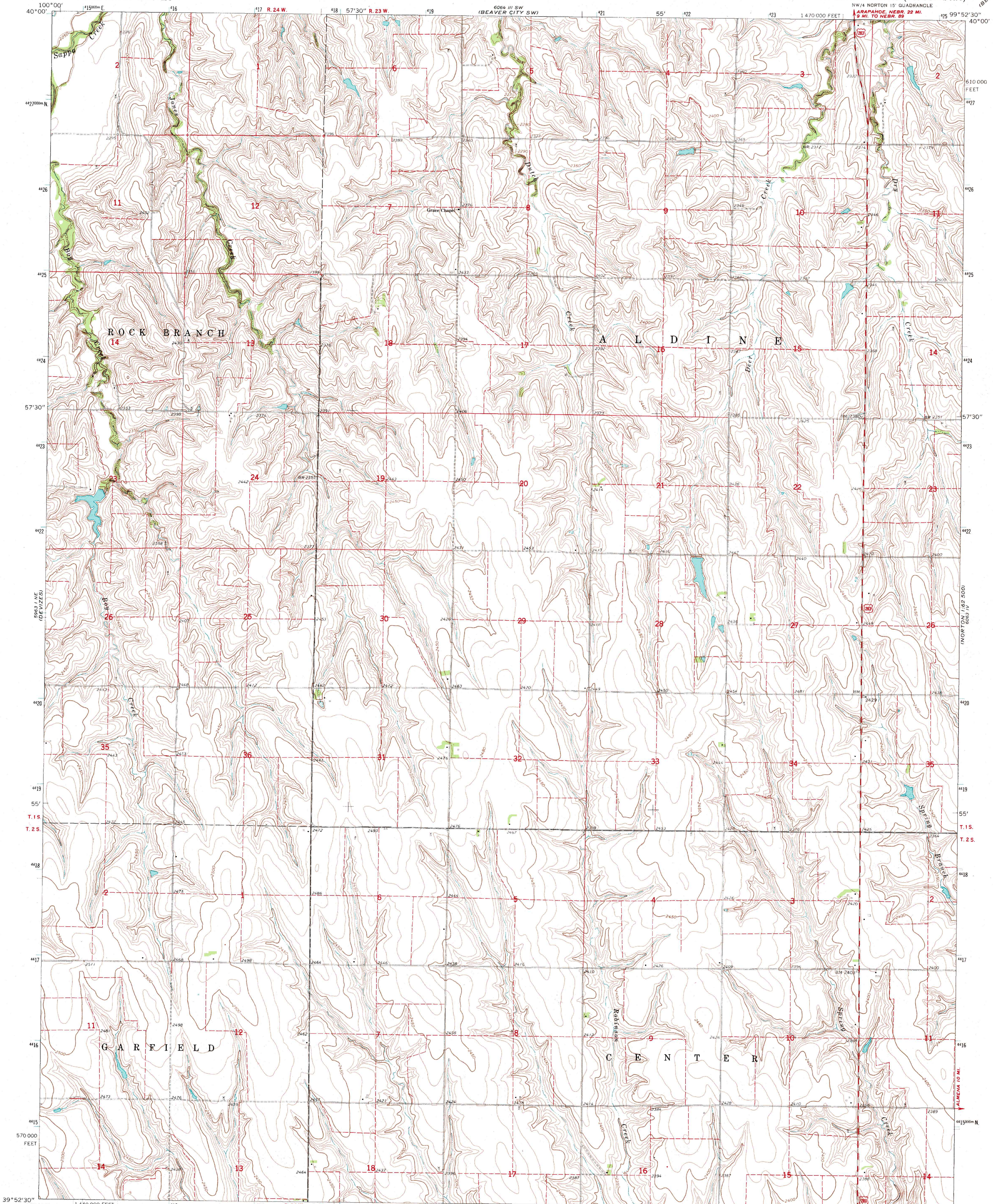


WILSONVILLE

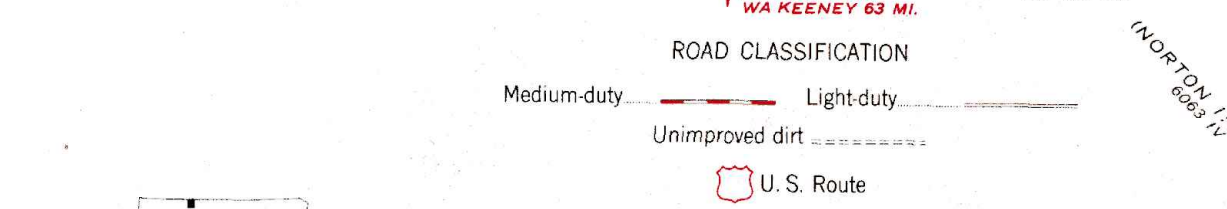
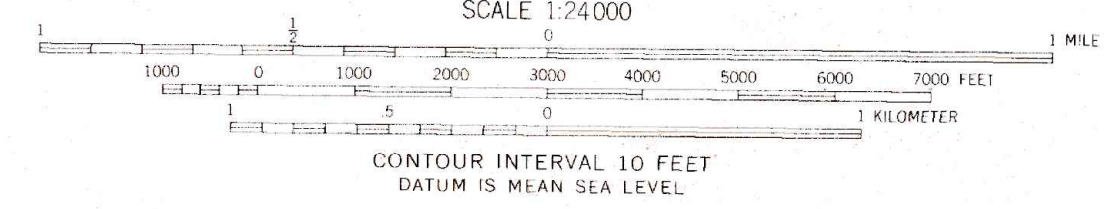
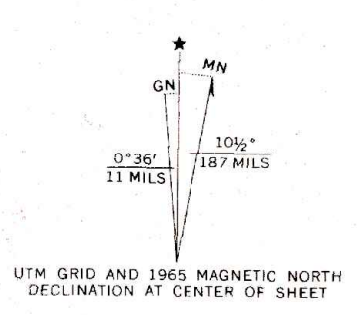
UNITED STATES
DEPARTMENT OF THE INTERIOR
GEOLOGICAL SURVEY

NORTON NW QUADRANGLE
KANSAS—NORTON CO.
7.5 MINUTE SERIES (TOPOGRAPHIC)

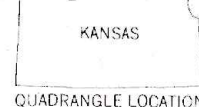
BEAVER CITY SE



Mapped, edited, and published by the Geological Survey as part of the Department of the Interior program for the development of the Missouri River Basin. Control by USGS and USC&GS. Topography by photogrammetric methods from aerial photographs taken 1963. Field checked 1965. Polyconic projection. 1927 North American datum. 10,000-foot grid based on Kansas coordinate system, north zone. 1000-meter Universal Transverse Mercator grid ticks, zone 14, shown in blue. Fine red dashed lines indicate selected fence and field lines where generally visible on aerial photographs. This information is unchecked.



THIS MAP COMPLIES WITH NATIONAL MAP ACCURACY STANDARDS
FOR SALE BY U.S. GEOLOGICAL SURVEY, DENVER, COLORADO 80225 OR WASHINGTON, D.C. 20242
AND BY THE STATE GEOLOGICAL SURVEY, LAWRENCE, KANSAS
A FOLDER DESCRIBING TOPOGRAPHIC MAPS AND SYMBOLS IS AVAILABLE ON REQUEST



NORTON NW, KANS.
NW 1/4 NORTON 15 QUADRANGLE
N3952.5—W9952.5/7.5

1965

AMS 6063 IV NW—SERIES V878