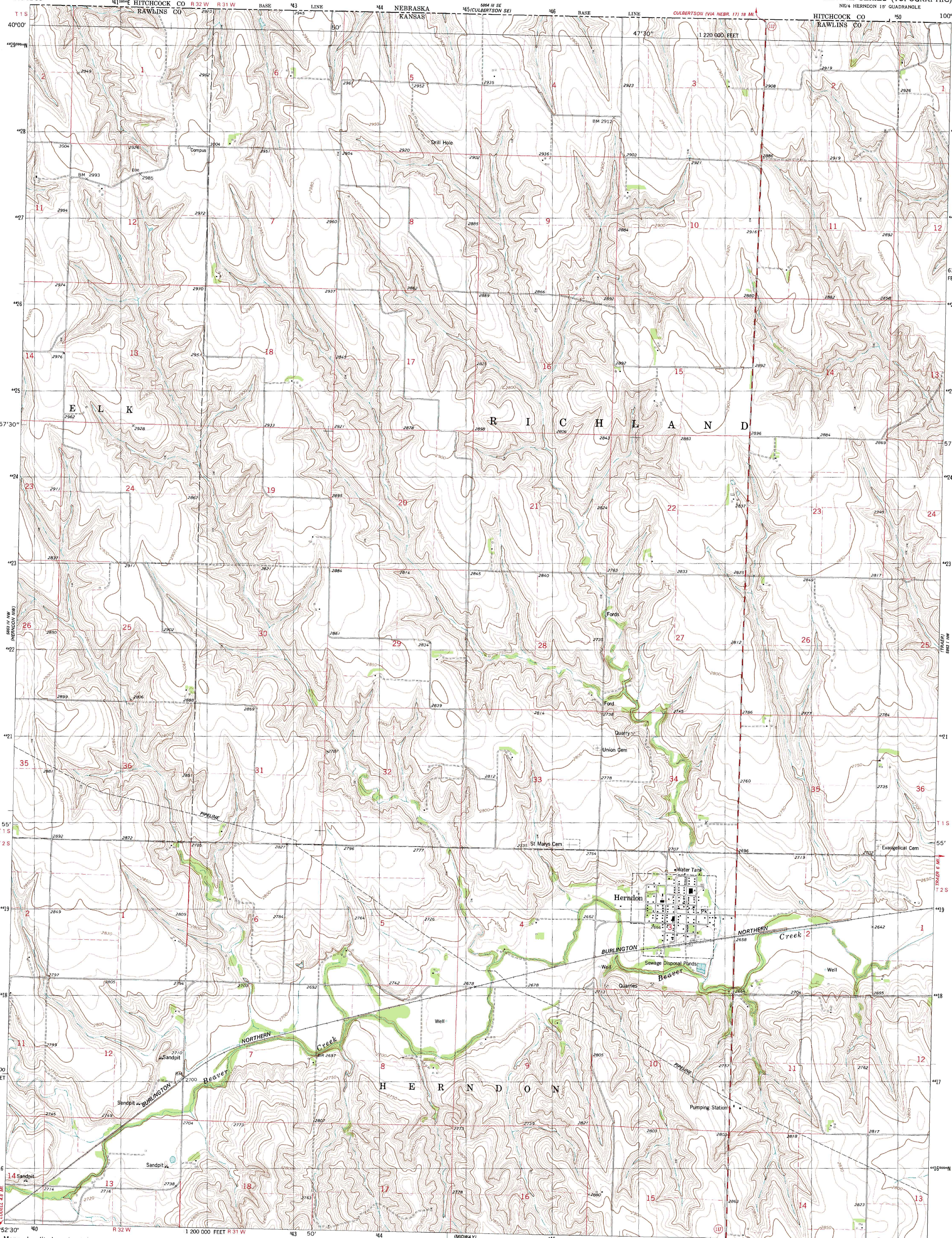


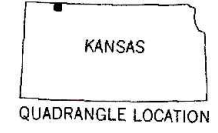
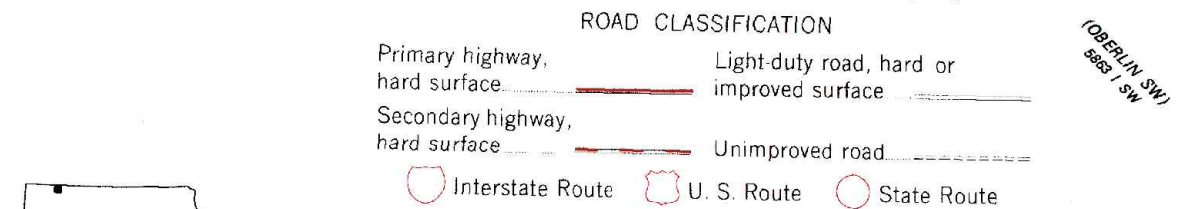
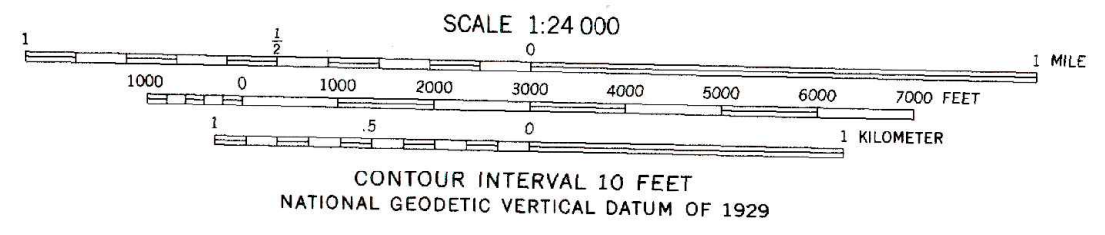
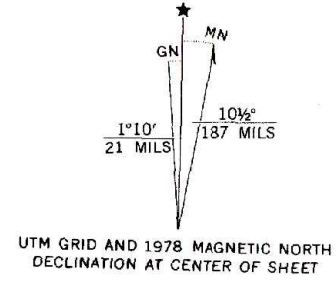
UNITED STATES
DEPARTMENT OF THE INTERIOR
GEOLOGICAL SURVEY

STATE OF KANSAS

HERNDON QUADRANGLE
KANSAS—RAWLINS CO.
7.5 MINUTE SERIES (TOPOGRAPHIC)
NE 4 HERNDON 15' QUADRANGLE



Mapped, edited, and published by the Geological Survey
in cooperation with State of Kansas agencies
Control by USGS and NOS/NOAA
Topography by photogrammetric methods from aerial photographs
taken 1975. Field checked 1976. Map edited 1978
Projection and 10,000-foot grid ticks: Kansas coordinate
system, north zone (Lambert conformal conic)
1000-meter Universal Transverse Mercator grid, zone 14
1927 North American datum
Fine red dashed lines indicate selected fence and field lines where
generally visible on aerial photographs. This information is unchecked



THIS MAP COMPLIES WITH NATIONAL MAP ACCURACY STANDARDS
FOR SALE BY U.S. GEOLOGICAL SURVEY, DENVER, COLORADO 80225, OR RESTON, VIRGINIA 22092
AND STATE GEOLOGICAL SURVEY, LAWRENCE, KANSAS 66044
A FOLDER DESCRIBING TOPOGRAPHIC MAPS AND SYMBOLS IS AVAILABLE ON REQUEST

HERNDON, KANS.
NE 4 HERNDON 15' QUADRANGLE
N3952.5-W10045/7.5

1978
AMS 5863 IV NE-SERIES V878