

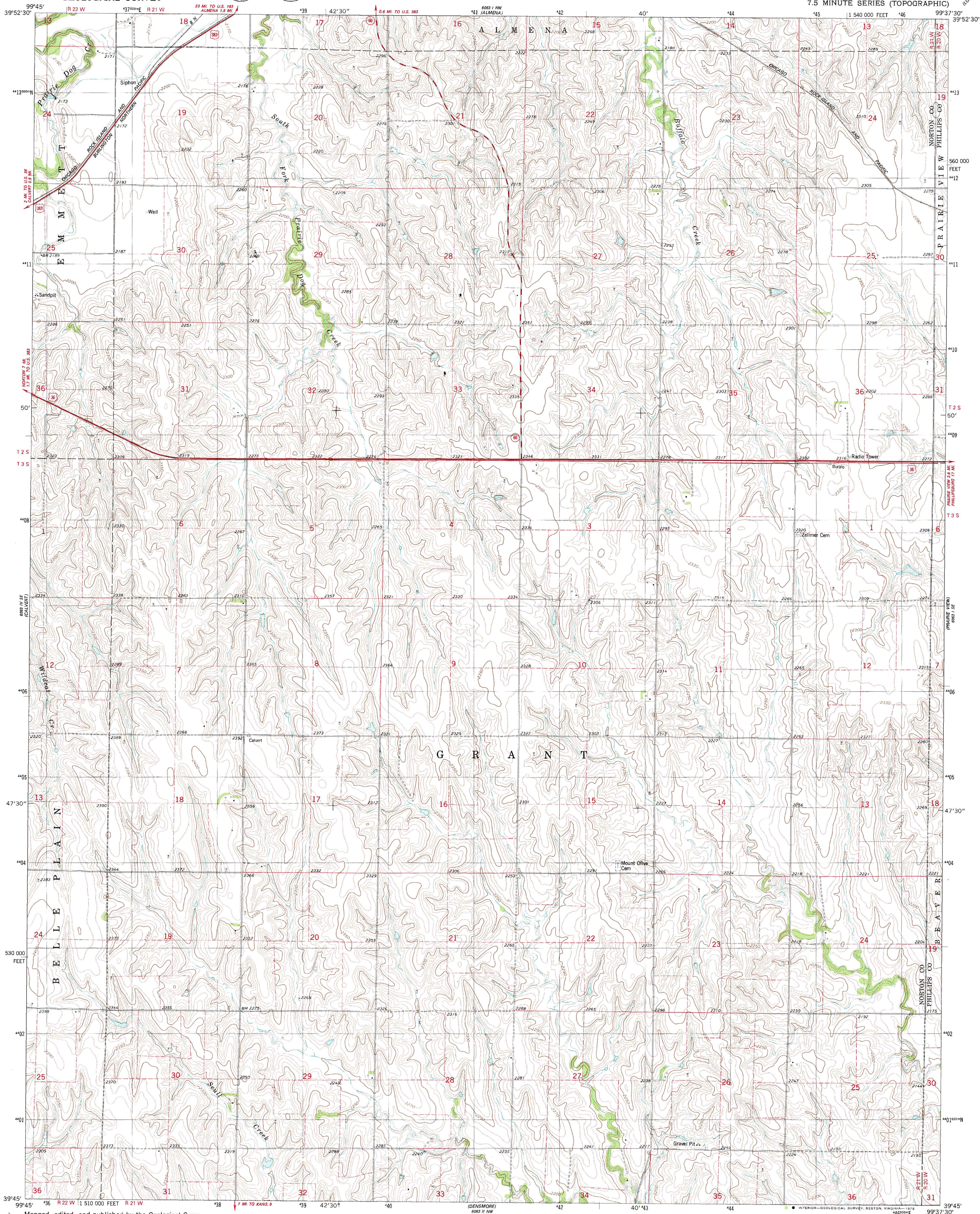
6063 I NW
6063 I NE
6063 I SE
6063 I SW

UNITED STATES
DEPARTMENT OF THE INTERIOR
GEOLOGICAL SURVEY



ALMENA SW QUADRANGLE
KANSAS
7.5 MINUTE SERIES (TOPOGRAPHIC)

6063 I NW
6063 I NE
6063 I SE
6063 I SW

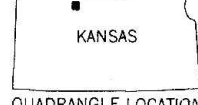
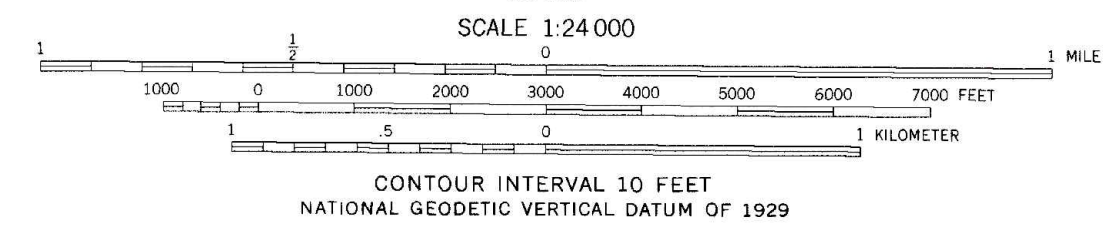
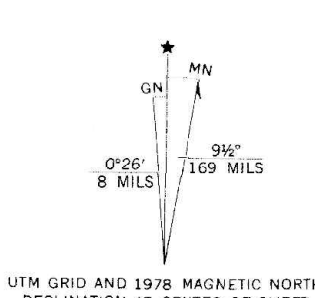


Mapped, edited, and published by the Geological Survey
Control by USGS and NOS/NOAA

Topography by photogrammetric methods from aerial photographs
taken 1974. Field checked 1975. Map edited 1978

Projection and 10,000-foot grid ticks: Kansas coordinate
system, north zone (Lambert conformal conic)
1000-meter Universal Transverse Mercator grid, zone 14
1927 North American datum

Fine red dashed lines indicate selected fence and field lines where
generally visible on aerial photographs. This information is unchecked



ALMENA SW, KANS.
N3945-W9937.5/7.5

1978

AMS 6063 I SW-SERIES V878