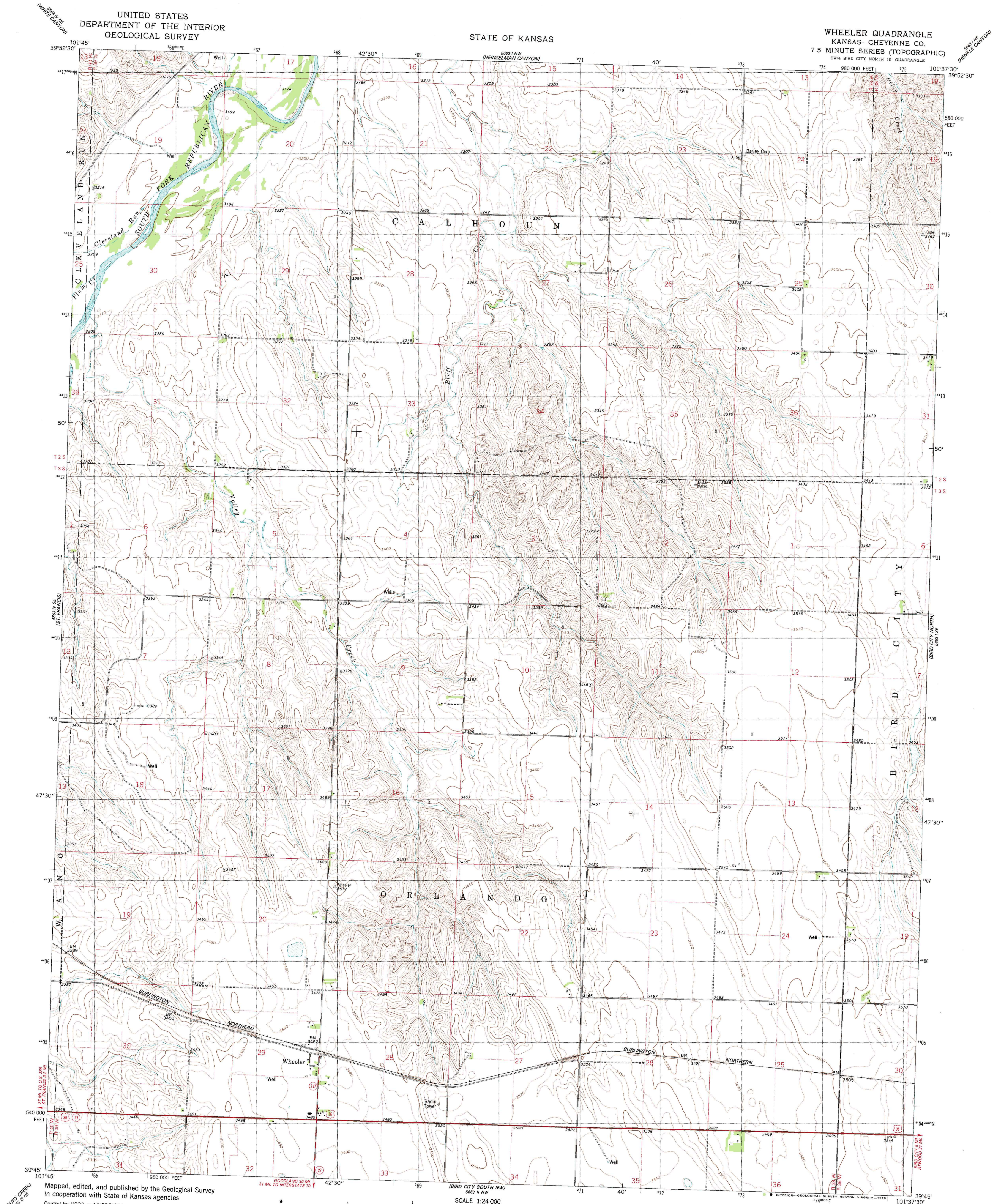


UNITED STATES  
DEPARTMENT OF THE INTERIOR  
GEOLOGICAL SURVEY

STATE OF KANSAS

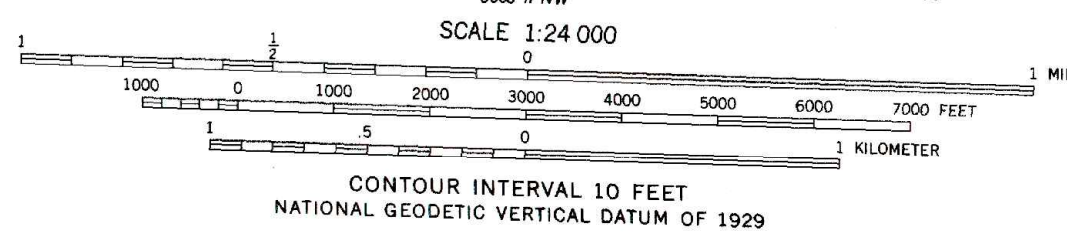
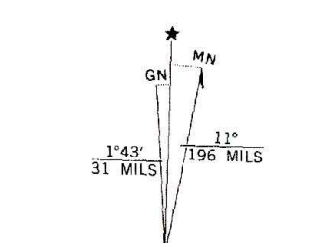
WHEELER QUADRANGLE  
KANSAS—CHEYENNE CO.  
7.5 MINUTE SERIES (TOPOGRAPHIC)  
SW/4 BIRD CITY NORTH 15' QUADRANGLE



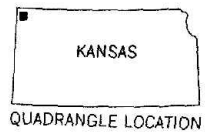
Mapped, edited, and published by the Geological Survey  
in cooperation with State of Kansas agencies  
Control by USGS and NOS/NOAA

Topography by photogrammetric methods from aerial photographs  
taken 1974. Field checked 1976. Map edited 1978  
Projection and 10,000-foot grid ticks: Kansas coordinate  
system, north zone (Lambert conformal conic)  
1000-meter Universal Transverse Mercator grid, zone 14  
1927 North American datum

Fine red dashed lines indicate selected fence and field lines where  
generally visible on aerial photographs. This information is unchecked



ROAD CLASSIFICATION  
Primary highway, hard surface  
Secondary highway, hard surface  
Unimproved road  
Interstate Route  
U. S. Route  
State Route



THIS MAP COMPLIES WITH NATIONAL MAP ACCURACY STANDARDS  
FOR SALE BY U. S. GEOLOGICAL SURVEY, DENVER, COLORADO 80225, OR RESTON, VIRGINIA 22092  
AND STATE GEOLOGICAL SURVEY, LAWRENCE, KANSAS 66044  
A FOLDER DESCRIBING TOPOGRAPHIC MAPS AND SYMBOLS IS AVAILABLE ON REQUEST

WHEELER, KANS.  
SW/4 BIRD CITY NORTH 15' QUADRANGLE  
N3945 — W10137.5/7.5

1978  
AMS 5663 1 SW—SERIES V878