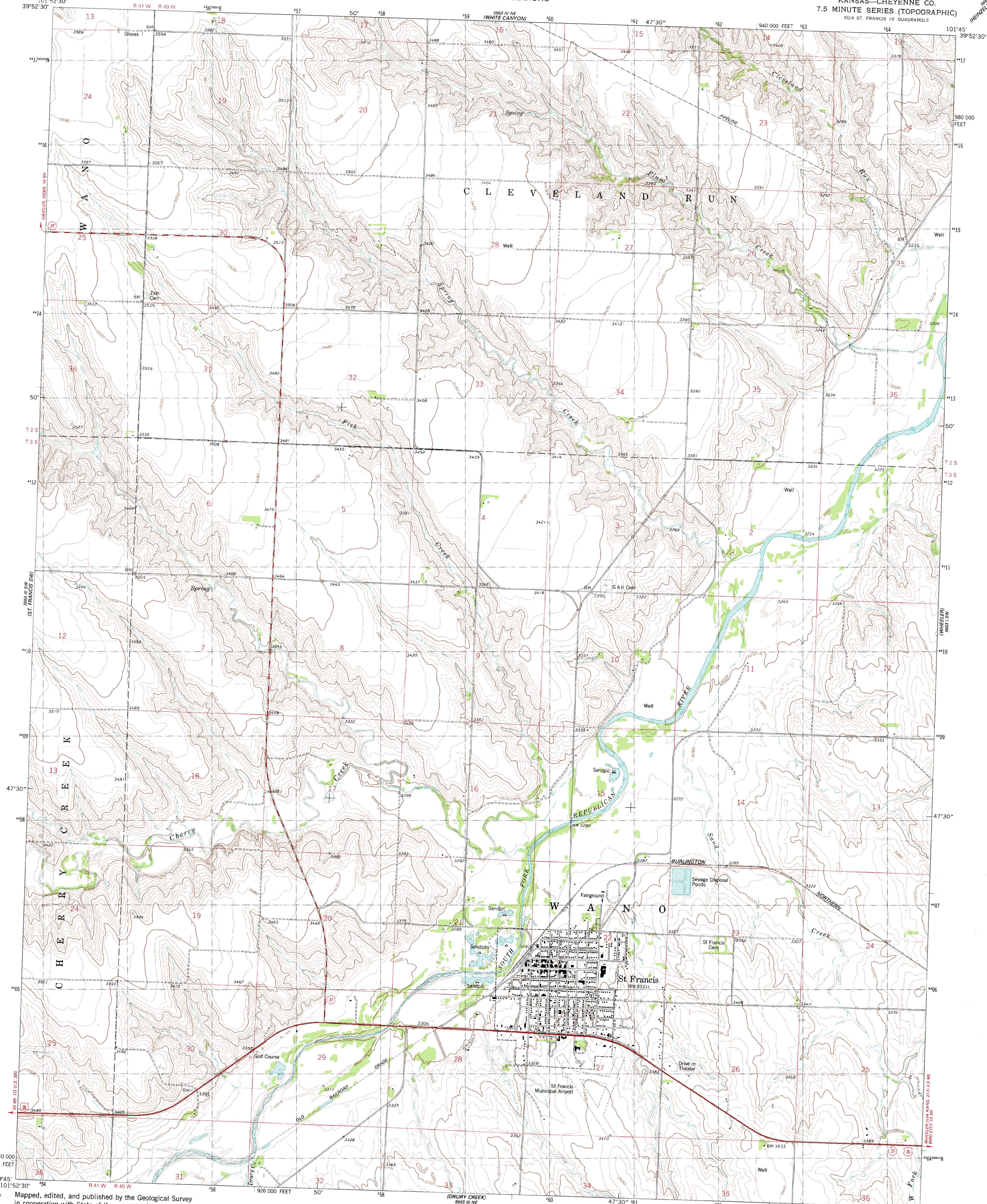


UNITED STATES
DEPARTMENT OF THE INTERIOR
GEOLOGICAL SURVEY

STATE OF KANSAS

ST. FRANCIS QUADRANGLE
KANSAS—CHEYENNE CO.
7.5 MINUTE SERIES (TOPOGRAPHIC)
SE/4 ST. FRANCIS 19 QUADRANGLE



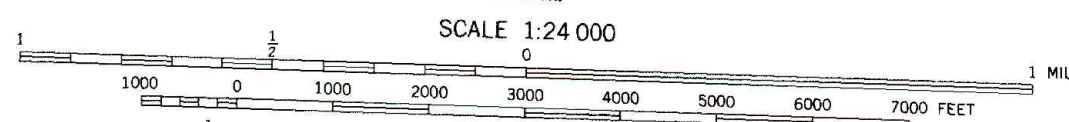
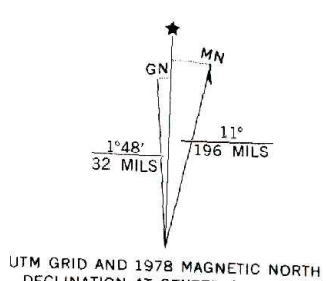
Mapped, edited, and published by the Geological Survey
in cooperation with State of Kansas agencies

Control by USGS and NOS/NOAA

Topography by photogrammetric methods from aerial photographs
taken 1974. Field checked 1976. Map edited 1978

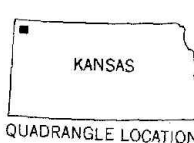
Projection and 10,000-foot grid ticks: Kansas coordinate
system, north zone (Lambert conformal conic)
1000-meter Universal Transverse Mercator grid, zone 14
1927 North American datum

Fine red dashed lines indicate selected fence and field lines where
generally visible on aerial photographs. This information is unchecked



CONTOUR INTERVAL 10 FEET
NATIONAL GEODETIC VERTICAL DATUM OF 1929

THIS MAP COMPLIES WITH NATIONAL MAP ACCURACY STANDARDS
FOR SALE BY U.S. GEOLOGICAL SURVEY, DENVER, COLORADO 80225, OR RESTON, VIRGINIA 22092
AND STATE GEOLOGICAL SURVEY, LAWRENCE, KANSAS 66044
A FOLDER DESCRIBING TOPOGRAPHIC MAPS AND SYMBOLS IS AVAILABLE ON REQUEST



ROAD CLASSIFICATION	
Primary highway, hard surface	Light-duty road, hard or improved surface
Secondary highway, hard surface	Unimproved road
Interstate Route	U.S. Route
	State Route

ST. FRANCIS, KANS.
SE/4 ST. FRANCIS 19 QUADRANGLE
N3945 — W10145/7.5

1978

AMS 5663 IV SE-SERIES V878