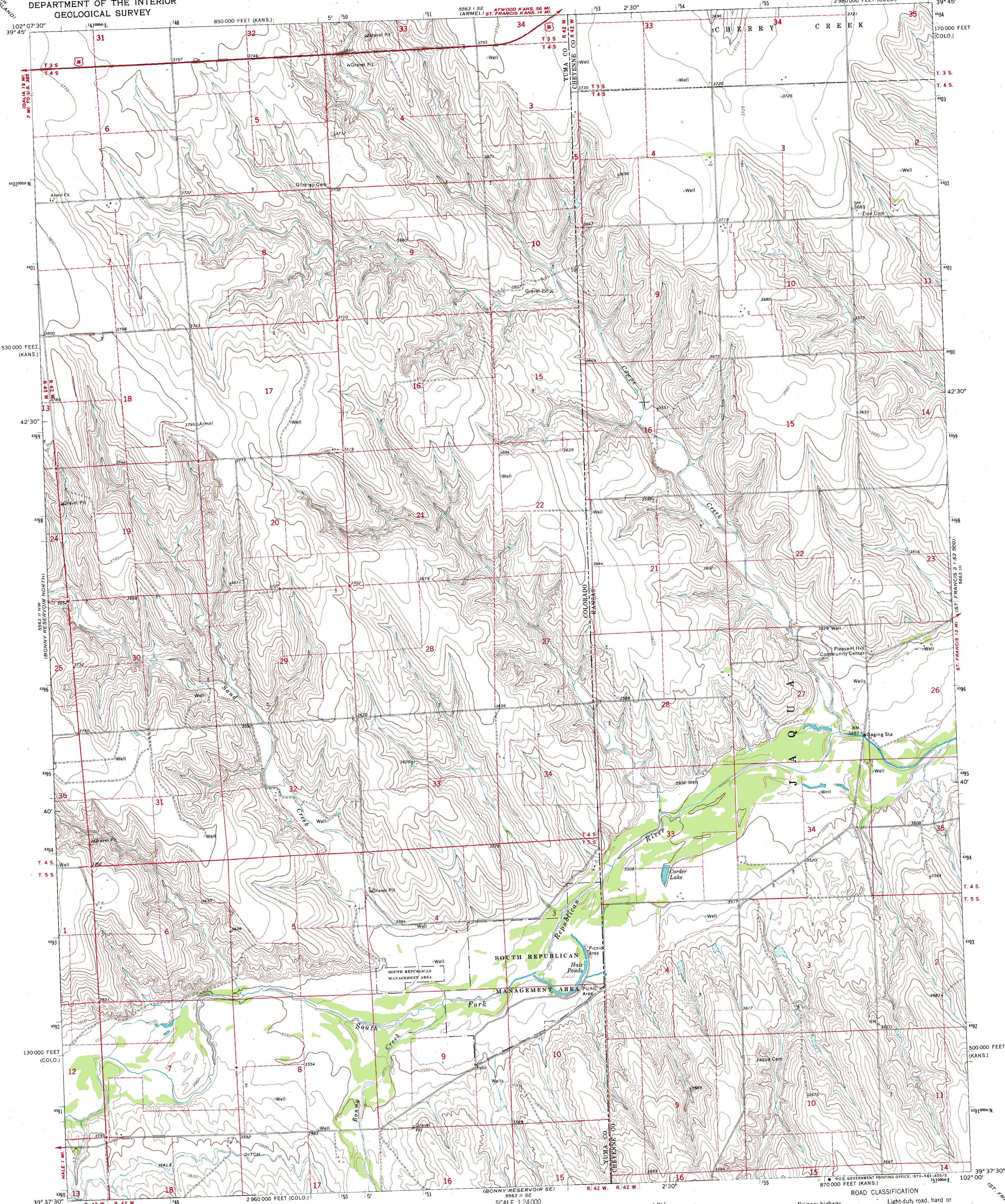


UNITED STATES  
DEPARTMENT OF THE INTERIOR  
GEOLOGICAL SURVEY

HALE PONDS QUADRANGLE  
COLORADO-KANSAS  
7.5 MINUTE SERIES (TOPOGRAPHIC)

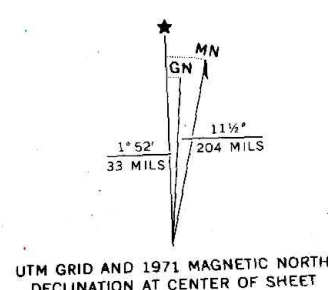
NE 1/4 BONNY RESERVOIR 15' QUADRANGLE  
2 980 000 FEET (COLO.)

5563 II SE  
(ST. FRANCIS 3 1:62 500)



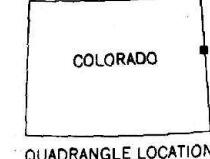
Mapped, edited, and published by the Geological Survey  
as part of the Department of the Interior program  
for the development of the Missouri River Basin  
Control by USGS and USC&GS

Topography by photogrammetric methods from aerial  
photographs taken 1970. Field checked 1971  
Polyconic projection. 1927 North American datum  
10,000-foot grids based on Colorado coordinate system,  
north zone and Kansas coordinate system, north zone.  
1:000-meter Universal Transverse Mercator grid ticks,  
zone 13, shown in blue  
Fine red dashed lines indicate selected fence lines  
R. 42 W., Sixth Principal Meridian  
is duplicated in Colorado and Kansas



SCALE 1:24 000  
CONTOUR INTERVAL 10 FEET  
DOTTED LINES REPRESENT 5-FOOT CONTOURS  
DATUM IS MEAN SEA LEVEL

THIS MAP COMPLIES WITH NATIONAL MAP ACCURACY STANDARDS  
FOR SALE BY U. S. GEOLOGICAL SURVEY, DENVER, COLORADO 80225, OR WASHINGTON, D. C. 20242  
A FOLDER DESCRIBING TOPOGRAPHIC MAPS AND SYMBOLS IS AVAILABLE ON REQUEST



ROAD CLASSIFICATION  
Primary highway, hard surface  
Secondary highway, hard surface  
Unimproved road  
Light-duty road, hard or improved surface  
Interstate Route  
U. S. Route  
State Route

HALE PONDS, COLO.-KANS.  
NE 1/4 BONNY RESERVOIR 15' QUADRANGLE  
N3937.5-W10200/7.5

1971

AMS 5563 II NE-SERIES V877