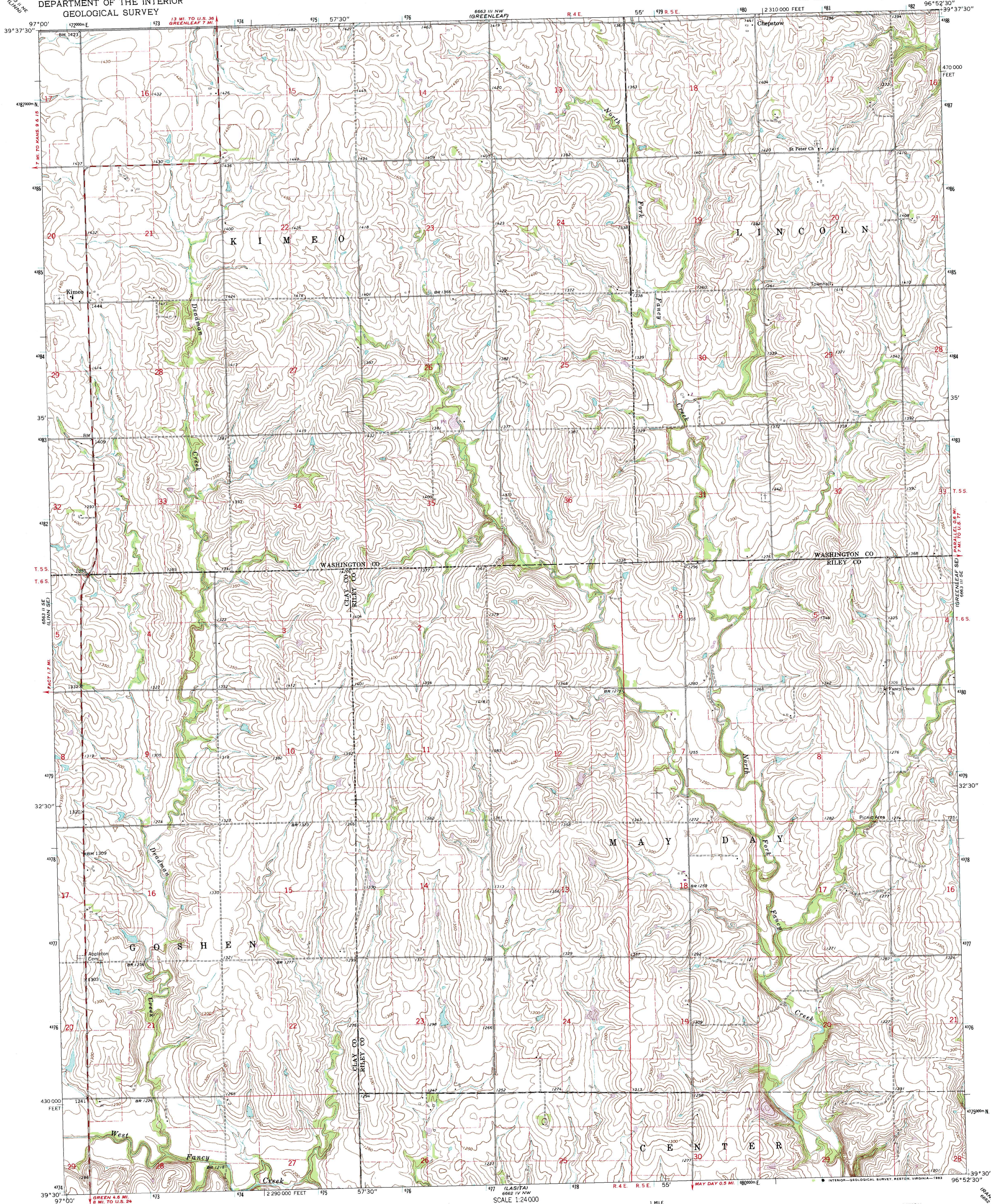


UNITED STATES
DEPARTMENT OF THE INTERIOR
GEOLOGICAL SURVEY

KIMEO QUADRANGLE
KANSAS
7.5 MINUTE SERIES (TOPOGRAPHIC)

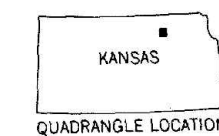


Maped, edited, and published by the Geological Survey
Control by USGS and USC&GS
Topography by photogrammetric methods from aerial
photographs taken 1965. Field checked 1968
Polyconic projection. 1927 North American datum
10,000-foot grid based on Kansas coordinate system, north zone
1000-meter Universal Transverse Mercator grid ticks,
zone 14, shown in blue
Fine red dashed lines indicate selected fence and field lines where
generally visible on aerial photographs. This information is unchecked
To place on the predicted North American Datum 1983,
move the projection lines 3 meters north and
26 meters east as shown by dashed corner ticks
Revisions shown in purple compiled from aerial photographs taken 1981 and
other sources. This information not field checked. Map edited 1983

UTM GRID AND 1983 MAGNETIC NORTH
DECLINATION AT CENTER OF SHEET
171° 23' 11" N
172° 24' 11" N

SCALE 1:24,000
CONTOUR INTERVAL 10 FEET
NATIONAL GEODETIC VERTICAL DATUM OF 1929
1 000 0 1000 2000 3000 4000 5000 6000 7000 FEET
1 KILOMETER

THIS MAP COMPLIES WITH NATIONAL MAP ACCURACY STANDARDS
FOR SALE BY U. S. GEOLOGICAL SURVEY, DENVER, COLORADO 80225, OR RESTON, VIRGINIA 22092
AND KANSAS GEOLOGICAL SURVEY, LAWRENCE, KANSAS 66044
A FOLDER DESCRIBING TOPOGRAPHIC MAPS AND SYMBOLS IS AVAILABLE ON REQUEST



ROAD CLASSIFICATION
Medium-duty ——— Light-duty ———
Unimproved dirt ———

KIMEO, KANS.
N3930—W9652.5/7.5
1968
PHOTOREVISED 1983
DMA 6663 III SW—SERIES V878