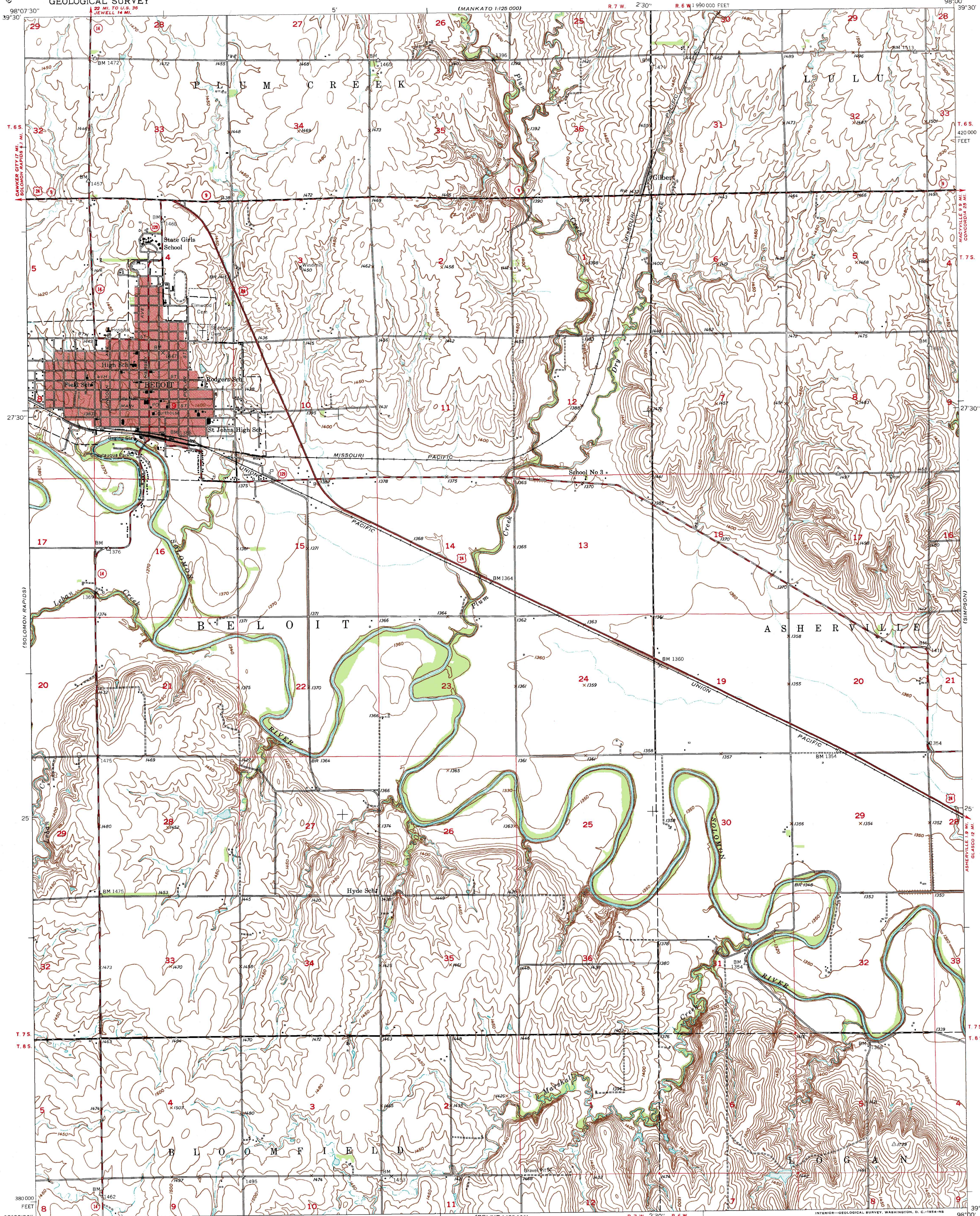


UNITED STATES
DEPARTMENT OF THE INTERIOR
GEOLOGICAL SURVEY

BELOIT QUADRANGLE
KANSAS—MITCHELL CO.
7.5 MINUTE SERIES (TOPOGRAPHIC)



Mapped, edited, and published by the Geological Survey
as part of the Department of the Interior program
for the development of the Missouri River Basin
Control by USGS and USC&GS

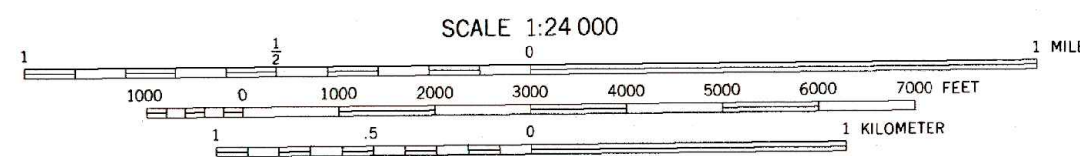
Topography from aerial photographs by Kelsh plotter
and by plane-table surveys 1952-1953. Aerial photographs taken 1951

Polyconic projection. 1927 North American datum
10,000-foot grid based on Kansas coordinate system,
north zone

Red tint indicates area in which only
landmark buildings are shown

Map photospected 1978
No major culture or drainage changes observed

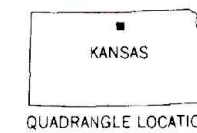
APPROXIMATE MEAN
DECLINATION, 1953



CONTOUR INTERVAL 10 FEET
DATUM IS MEAN SEA LEVEL

THIS MAP COMPLIES WITH NATIONAL MAP ACCURACY STANDARDS
FOR SALE BY U.S. GEOLOGICAL SURVEY, DENVER, COLORADO 80225, OR RESTON, VIRGINIA 22092
AND KANSAS GEOLOGICAL SURVEY, LAWRENCE, KANSAS 66044
A FOLDER DESCRIBING TOPOGRAPHIC MAPS AND SYMBOLS IS AVAILABLE ON REQUEST

ROAD CLASSIFICATION
Heavy-duty 4 LANE 16 LANE Light-duty
Medium-duty 4 LANE 16 LANE Unimproved dirt
U.S. Route State Route



BELOIT, KANS.
N 3922.5—W 9800/7.5
PHOTOINSPECTED 1978
1953