

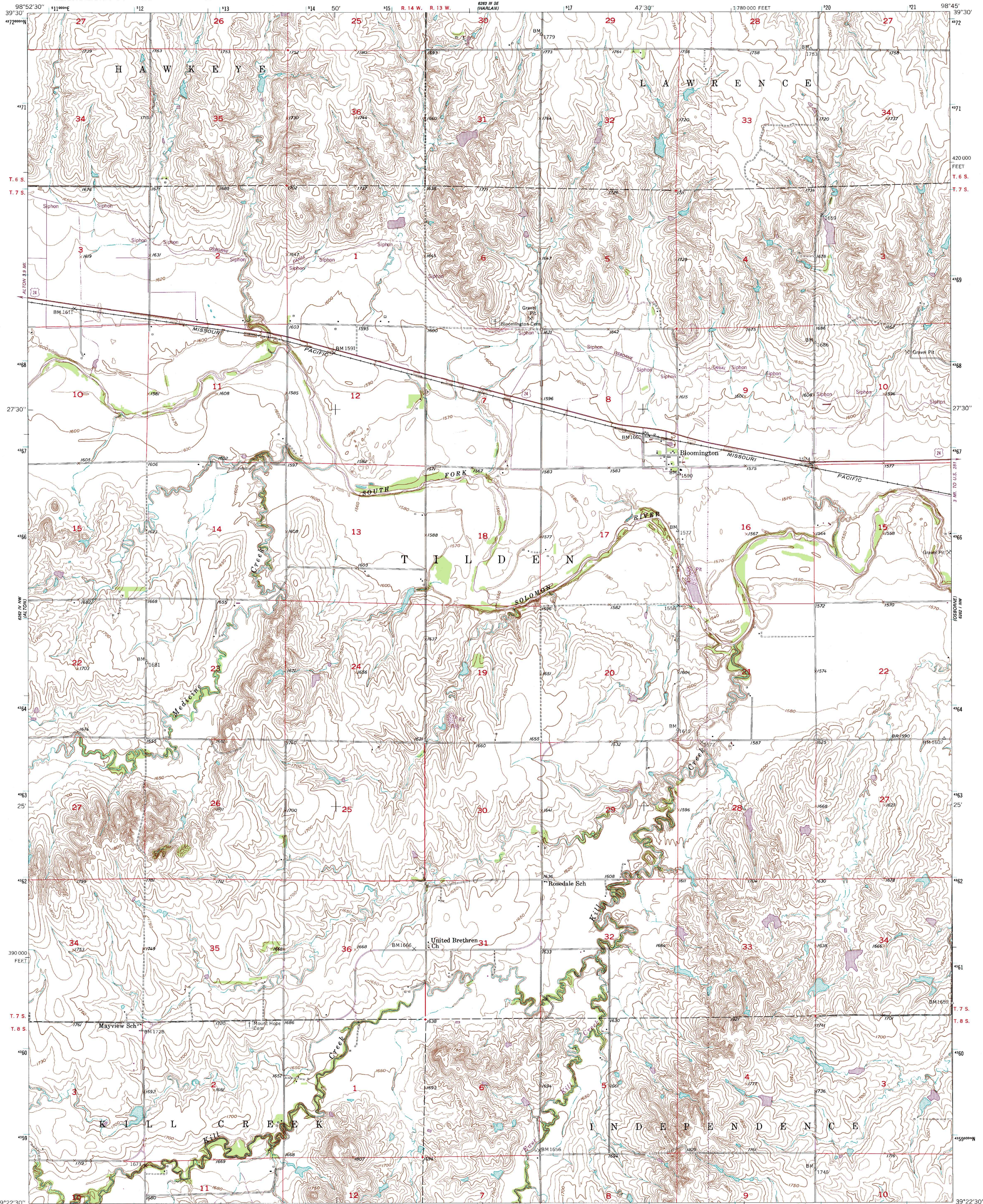
6262 IV NW
(OSBORNE SW)
6262 IV SE
(OSBORNE SW)

UNITED STATES
DEPARTMENT OF THE INTERIOR
GEOLOGICAL SURVEY



BLOOMINGTON QUADRANGLE
KANSAS-OSBORNE CO.
7.5 MINUTE SERIES (TOPOGRAPHIC)

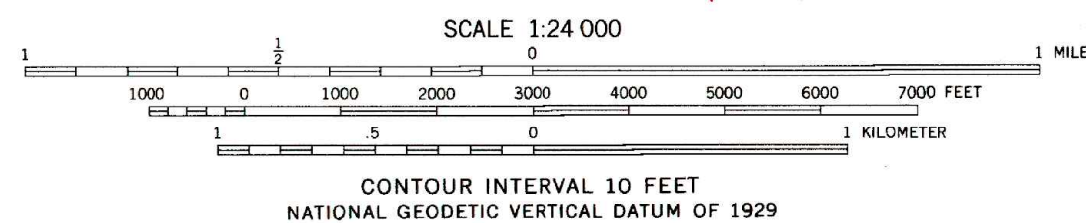
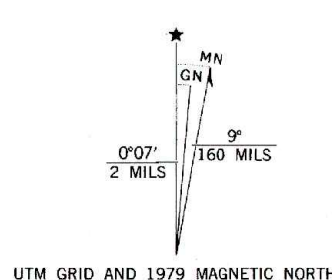
6262 IV SW
(OSBORNE SW)
6262 IV SE
(OSBORNE SW)



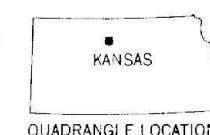
Mapped, edited, and published by the Geological Survey
as part of the Department of the Interior program
for the development of the Missouri River Basin
Control by USGS and USCGS

Topography from aerial photographs by Kelch plotter
Aerial photographs taken 1951. Field check 1953
Polyconic projection. 1927 North American datum
10,000 foot grid based on Kansas coordinate system,
north zone

1000-meter Universal Transverse Mercator grid ticks,
zone 14, shown in blue
Revisions shown in purple compiled in cooperation with
State of Kansas agencies from aerial photographs taken
1978. Map edited 1979. This information not field checked



THIS MAP COMPLIES WITH NATIONAL MAP ACCURACY STANDARDS
FOR SALE BY U. S. GEOLOGICAL SURVEY, DENVER, COLORADO 80225, OR RESTON, VIRGINIA 22092
AND STATE GEOLOGICAL SURVEY, LAWRENCE, KANSAS 66044
A FOLDER DESCRIBING TOPOGRAPHIC MAPS AND SYMBOLS IS AVAILABLE ON REQUEST



ROAD CLASSIFICATION	
Primary highway, hard surface	Light-duty road, hard or improved surface
Secondary highway, hard surface	Unimproved road
Interstate Route	U. S. Route
	State Route

BLOOMINGTON, KANS.
N3922.5-W9845/7.5

1953
PHOTOREVISED 1979
DMA 6262 IV NE-SERIES V878