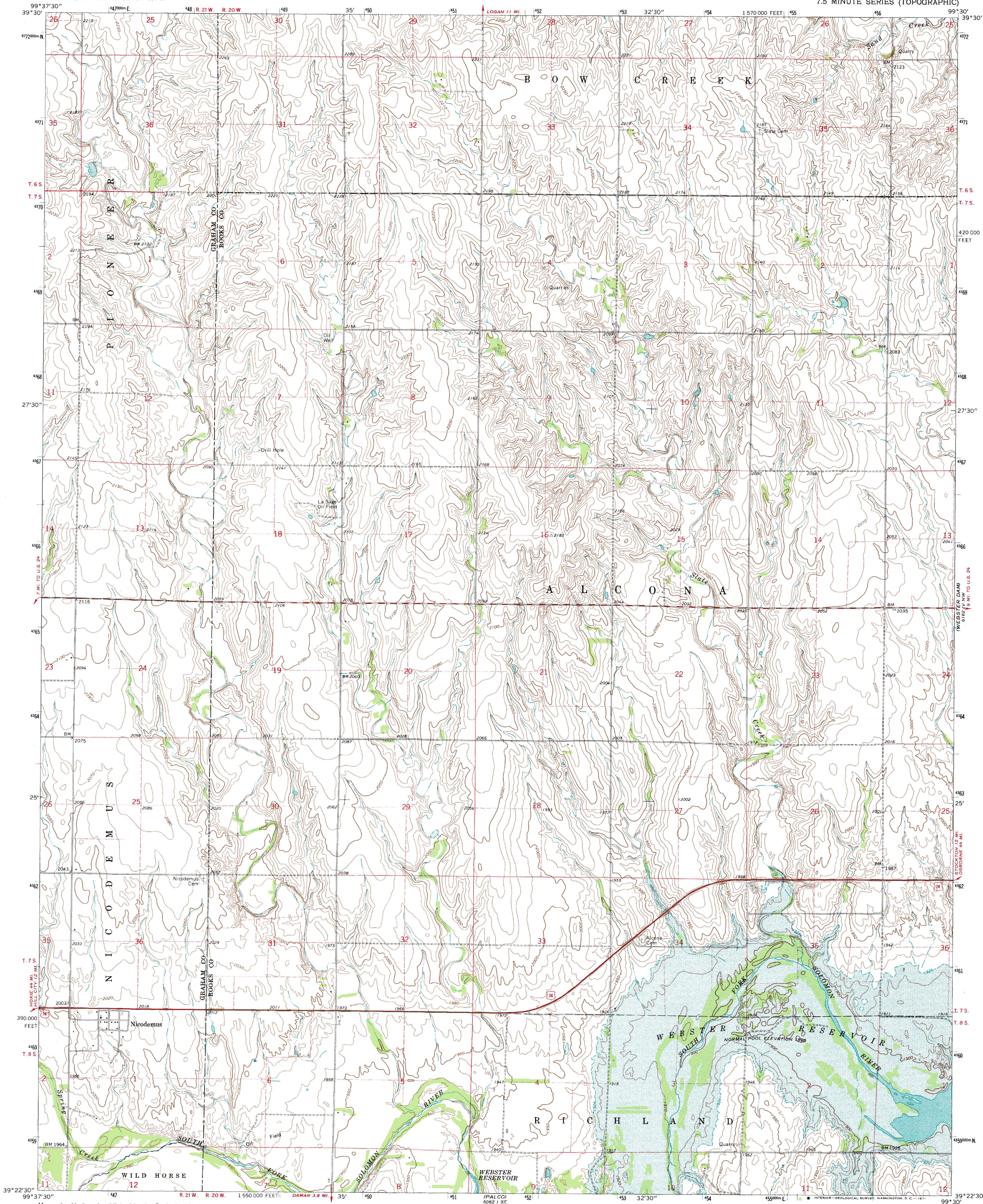


UNITED STATES  
DEPARTMENT OF THE INTERIOR  
GEOLOGICAL SURVEY

NICODEMUS QUADRANGLE  
KANSAS  
7.5 MINUTE SERIES (TOPOGRAPHIC)



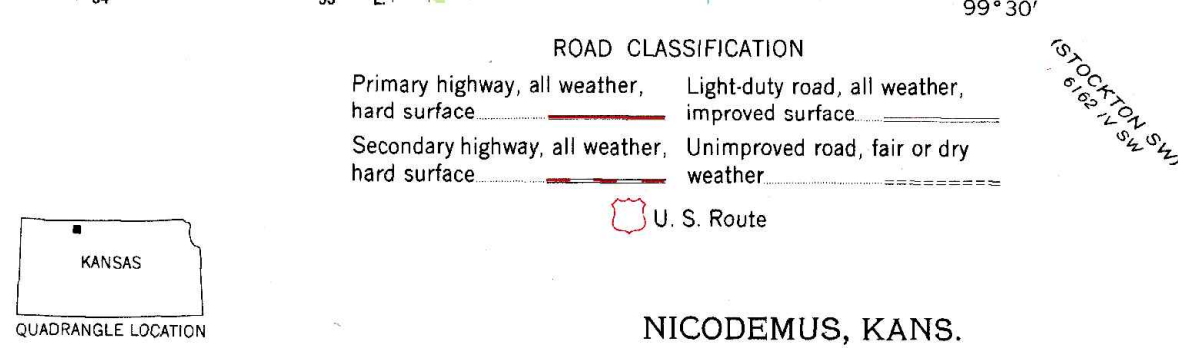
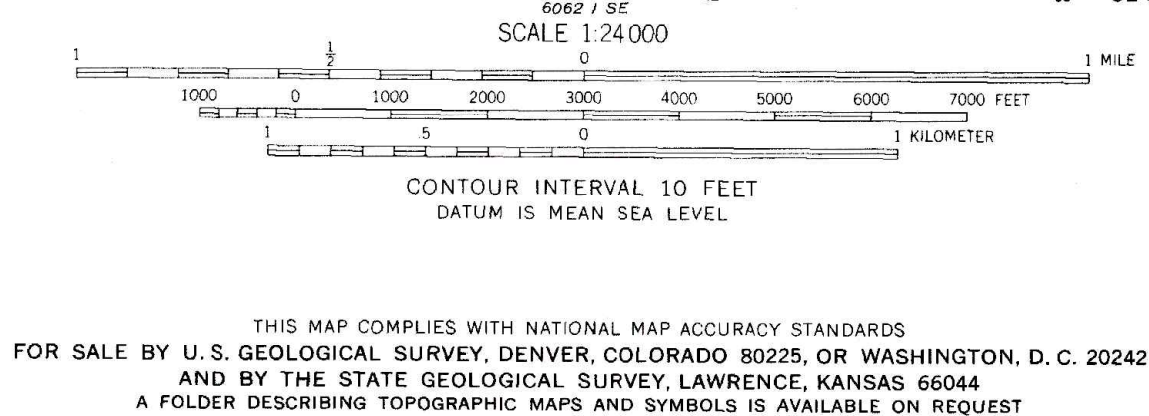
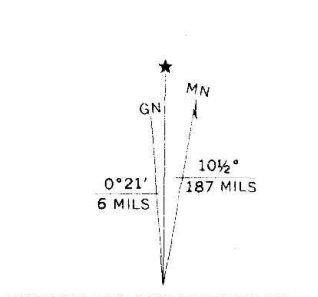
Mapped, edited, and published by the Geological Survey as part of the Department of the Interior program for the development of the Missouri River Basin Control by USGS and USC&GS.

Topography by photogrammetric methods from aerial photographs taken 1967. Field checked 1969.

Polyconic projection. 1927 North American datum 10,000-foot grid based on Kansas coordinate system, north zone 1000-meter Universal Transverse Mercator grid ticks, zone 14, shown in blue.

Areas covered by dashed light-blue pattern are subject to controlled inundation.

Fine red dashed lines indicate selected fence and field lines where generally visible on aerial photographs. This information is unchecked.



THIS MAP COMPLIES WITH NATIONAL MAP ACCURACY STANDARDS FOR SALE BY U.S. GEOLOGICAL SURVEY, DENVER, COLORADO 80225, OR WASHINGTON, D.C. 20242 AND BY THE STATE GEOLOGICAL SURVEY, LAWRENCE, KANSAS 66044 A FOLDER DESCRIBING TOPOGRAPHIC MAPS AND SYMBOLS IS AVAILABLE ON REQUEST

NICODEMUS, KANS.  
N3922.5-W9930/7.5

1969

AMS 6062 I NE-SERIES V878