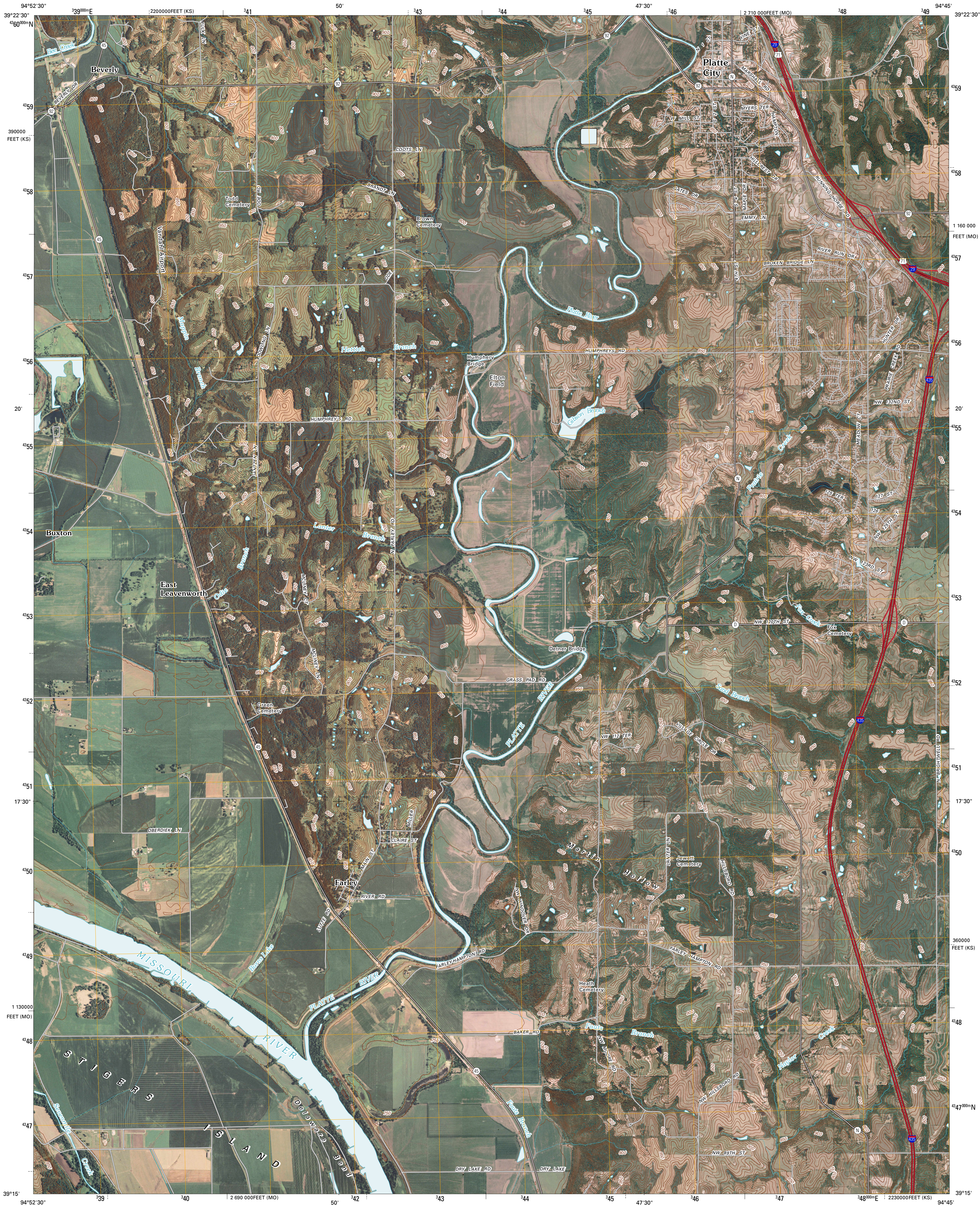




U.S. DEPARTMENT OF THE INTERIOR  
U. S. GEOLOGICAL SURVEY

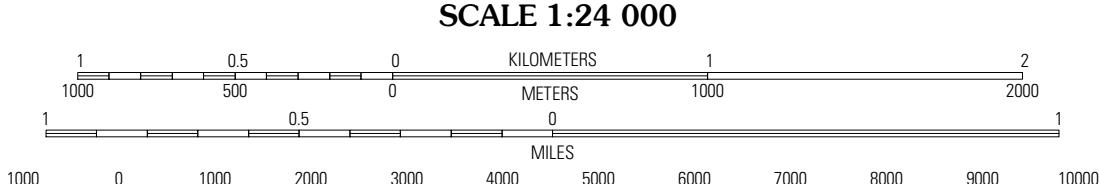
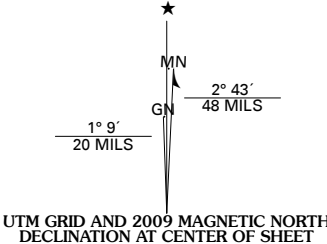


PLATTE CITY QUADRANGLE  
MISSOURI-KANSAS  
7.5-MINUTE SERIES



Produced by the United States Geological Survey  
North American Datum of 1983 (NAD83)  
World Geodetic System of 1984 (WGS84). Projection and  
1 000-meter grid: Universal Transverse Mercator, Zone 15S  
10 000-foot ticks: Missouri Coordinate System of 1983  
(west zone) and Kansas Coordinate System of 1983  
(north zone)

Imagery.....NAIP, July 2007 - June 2008  
Roads.....National Transportation Dataset, 2004  
Names.....GNIS, 2008  
Hydrography.....National Hydrography Dataset, 2007  
Contours.....National Elevation Dataset, 2008



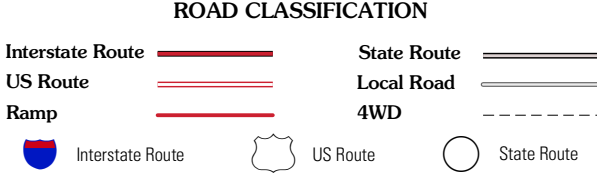
CONTOUR INTERVAL 10 FEET

This map was produced to conform with version 0.5.10 of the  
draft USGS Standards for 7.5-Minute Quadrangle Maps.  
A metadata file associated with this product is also draft version 0.5.10



QUADRANGLE LOCATION			
Weston	Tracy	Camden Point	
Leavenworth	Platte City	Ferretview	
Beachor	Wolcott	Parkville	

ADJOINING 7.5' QUADRANGLES



PLATTE CITY, MO-KS  
2009