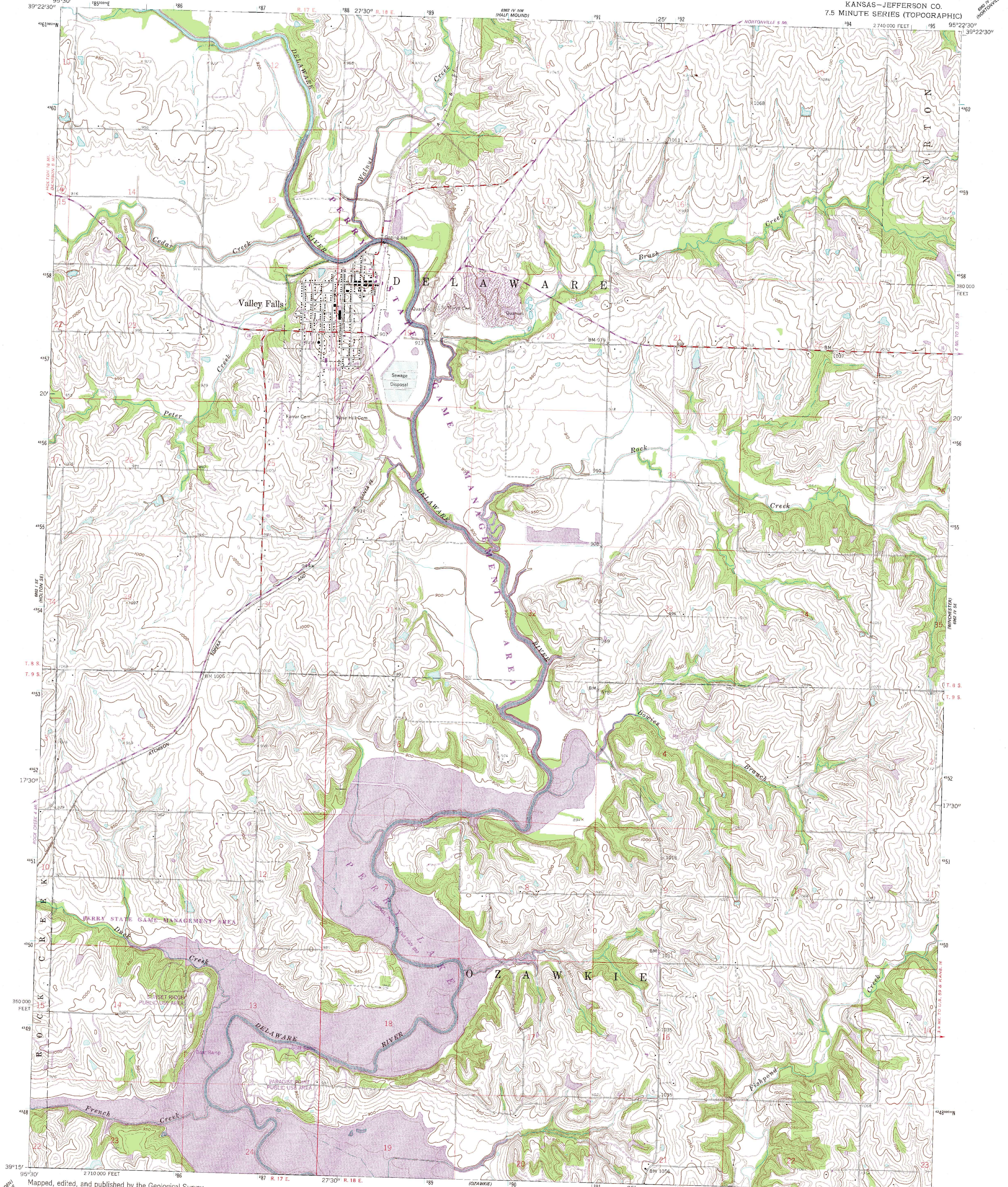
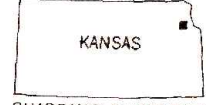
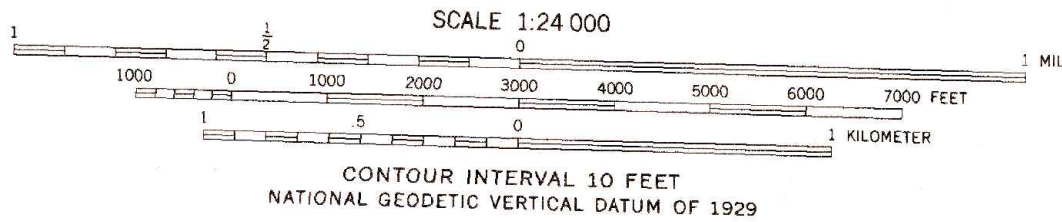
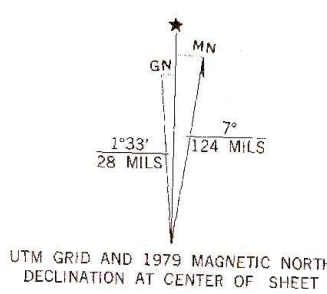


UNITED STATES
DEPARTMENT OF THE INTERIOR
GEOLOGICAL SURVEY

VALLEY FALLS QUADRANGLE
KANSAS-JEFFERSON CO.
7.5 MINUTE SERIES (TOPOGRAPHIC)



Mapped, edited, and published by the Geological Survey
Control by USGS and USC&GS
Topography from aerial photographs by photogrammetric methods
Aerial photographs taken 1957. Field check 1959
Polyconic projection. 1927 North American datum
10,000-foot grid based on Kansas coordinate system, north zone
To place on the predicted North American Datum 1983
move the projection lines 3 meters north and
22 meters east as shown by dashed corner ticks
1000-meter Universal Transverse Mercator grid ticks,
zone 15, shown in blue
Revisions shown in purple compiled in cooperation with
State of Kansas agencies from aerial photographs taken
1978. Map edited 1979. This information not field checked



ROAD CLASSIFICATION
Medium-duty ——— Light-duty ———
Unimproved dirt ———
State Route ———

VALLEY FALLS, KANS.
N 3915-W 9522.5/7.5

1959
PHOTO REVISSED 1979
DMA 6962 IV SW-SERIES Y878