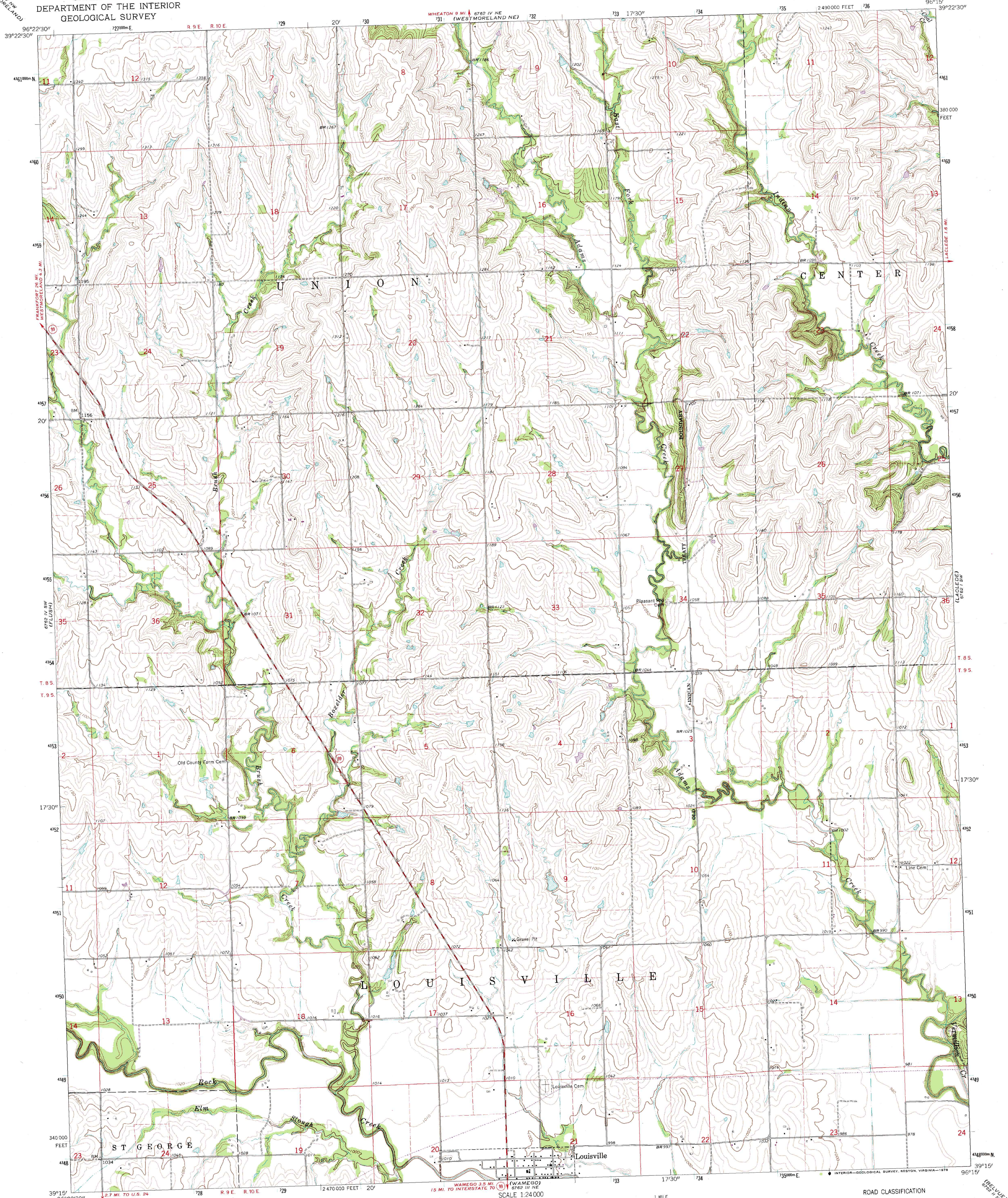


UNITED STATES
DEPARTMENT OF THE INTERIOR
GEOLOGICAL SURVEY

LOUISVILLE QUADRANGLE
KANSAS—POTTAWATOMIE CO.
7.5 MINUTE SERIES (TOPOGRAPHIC)



Mapped, edited, and published by the Geological Survey

Control by USGS and USC&GS

Topography by photogrammetric methods from aerial photographs taken 1959. Field checked 1964

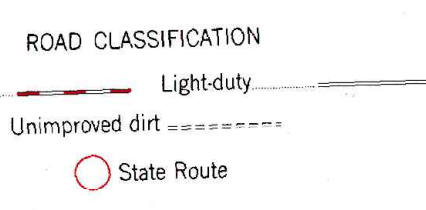
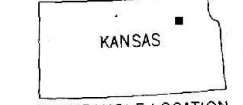
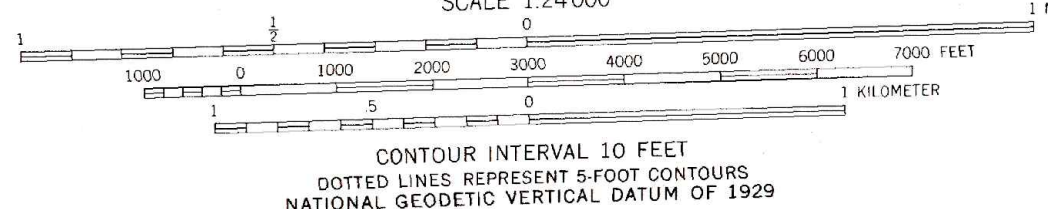
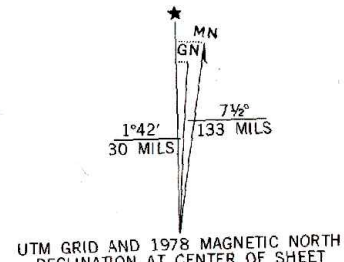
Polyconic projection. 1927 North American datum

10,000-foot grid based on Kansas coordinate system, north zone

1000-meter Universal Transverse Mercator grid ticks, zone 14, shown in blue

Fine red dashed lines indicate selected fence and field lines where generally visible on aerial photographs. This information is unchecked

Revisions shown in purple compiled in cooperation with State of Kansas agencies from aerial photographs taken 1977. Map edited 1978. This information not field checked



LOUISVILLE, KANS.
N3915—W9615/7.5

1964
PHOTOREVISED 1978
AMS 6762 IV SE—SERIES V878

THIS MAP COMPLIES WITH NATIONAL MAP ACCURACY STANDARDS
FOR SALE BY U. S. GEOLOGICAL SURVEY, DENVER, COLORADO 80225, OR RESTON, VIRGINIA 22092
AND STATE GEOLOGICAL SURVEY, LAWRENCE, KANSAS 66044
A FOLDER DESCRIBING TOPOGRAPHIC MAPS AND SYMBOLS IS AVAILABLE ON REQUEST