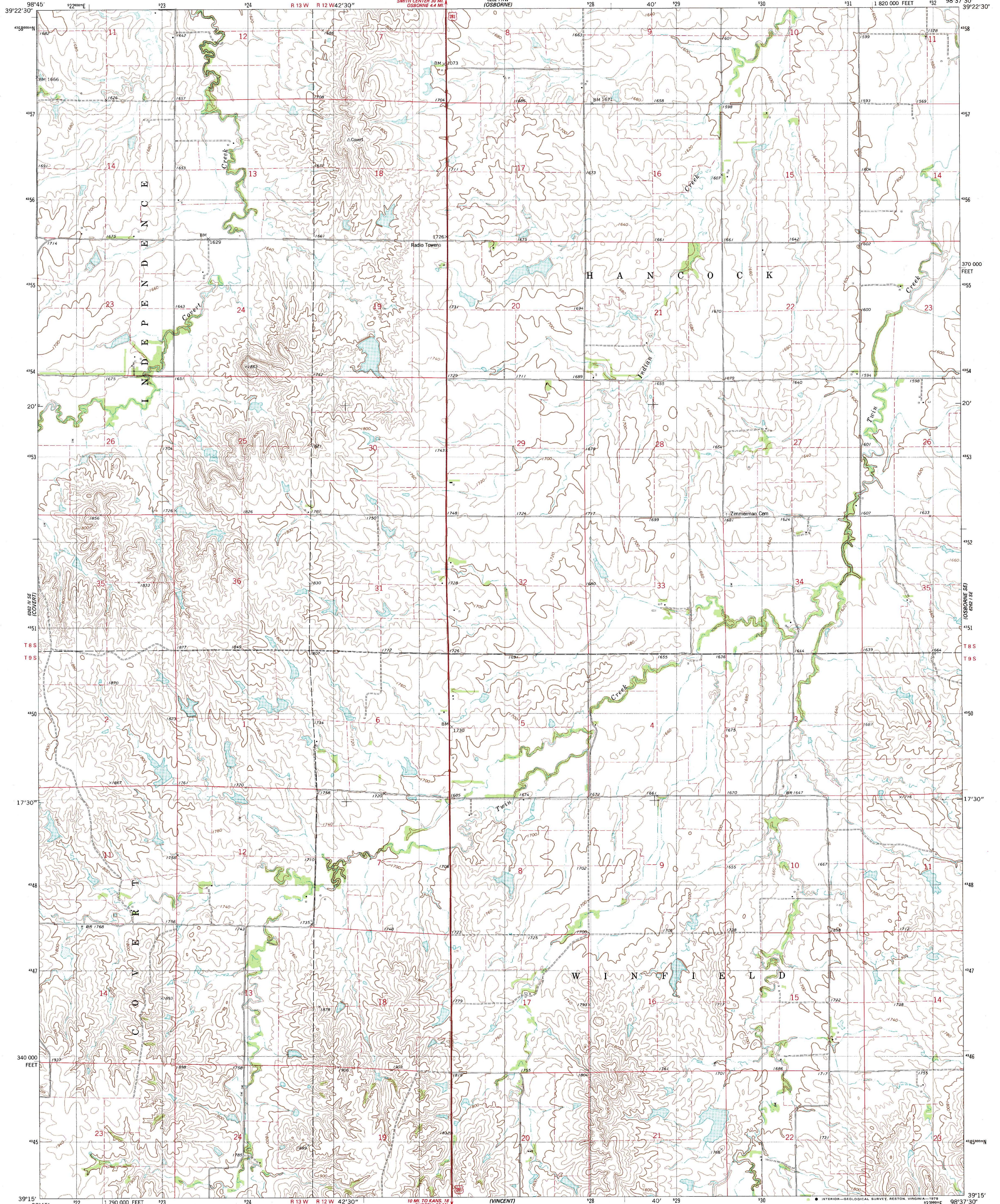


622 NE
(BLOOMINGTON)

UNITED STATES
DEPARTMENT OF THE INTERIOR
GEOLOGICAL SURVEY

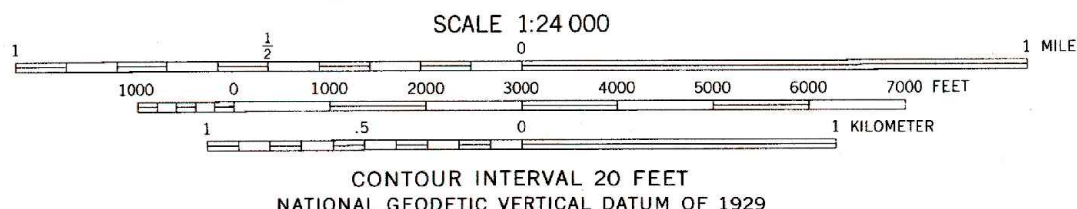
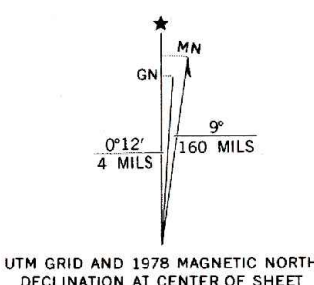
OSBORNE SW QUADRANGLE
KANSAS—OSBORNE CO.
7.5 MINUTE SERIES (TOPOGRAPHIC)

622 NE
(DOWNS SOUTH)

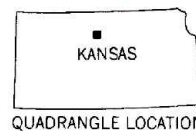


622 NE
(PARADISE RD)
622 NE

Mapped, edited, and published by the Geological Survey
Control by USGS and NOS/NOAA
Topography by photogrammetric methods from aerial photographs
taken 1974. Field checked 1975. Map edited 1978
Projection and 10,000-foot grid ticks: Kansas coordinate
system, north zone (Lambert conformal conic)
1000-meter Universal Transverse Mercator grid, zone 14
1927 North American datum
Fine red dashed lines indicate selected fence and field lines where
generally visible on aerial photographs. This information is unchecked



THIS MAP COMPLIES WITH NATIONAL MAP ACCURACY STANDARDS
FOR SALE BY U.S. GEOLOGICAL SURVEY, DENVER, COLORADO 80225, OR RESTON, VIRGINIA 22092
AND STATE GEOLOGICAL SURVEY, LAWRENCE, KANSAS 66044
A FOLDER DESCRIBING TOPOGRAPHIC MAPS AND SYMBOLS IS AVAILABLE ON REQUEST



ROAD CLASSIFICATION
Primary highway, hard surface ——— Light-duty road, hard or improved surface ———
Secondary highway, hard surface ——— Unimproved road ———
Interstate Route — U.S. Route — State Route —

OSBORNE SW, KANS.
N3915 — W9837.5/7.5

1978

AMS 6262 1 SW—SERIES V878

622 NE
(MEADES RANCH)
622 NE