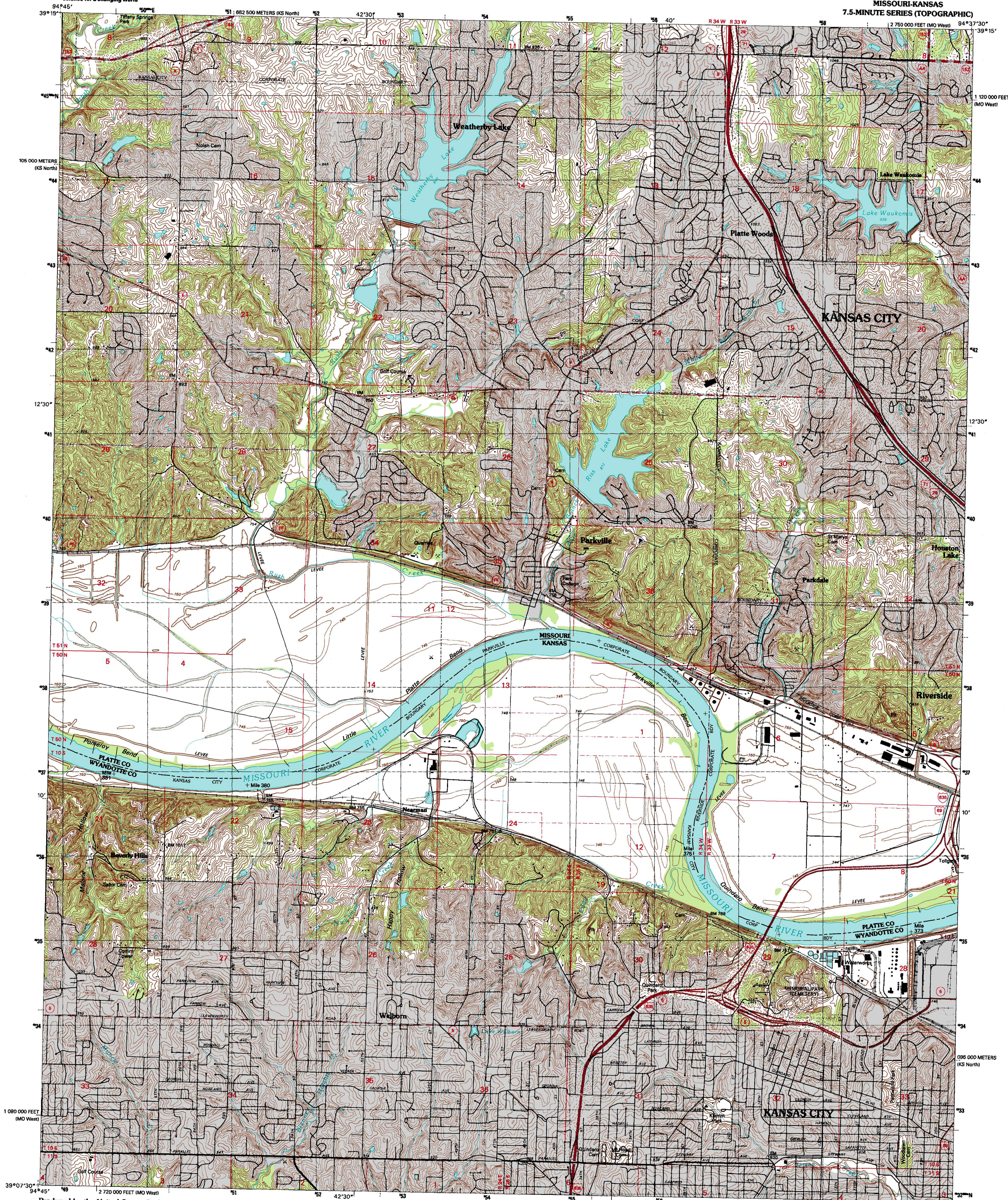


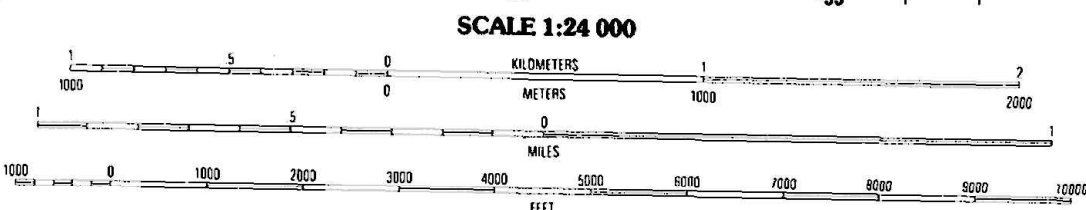
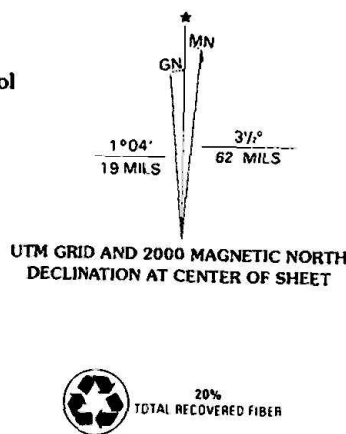


U.S. DEPARTMENT OF THE INTERIOR
U.S. GEOLOGICAL SURVEY

PARKVILLE QUADRANGLE
MISSOURI-KANSAS
7.5-MINUTE SERIES (TOPOGRAPHIC)



Produced by the United States Geological Survey
Topography compiled 1964. Planimetry derived from imagery taken 1990 and other sources. Photomapped using imagery dated 1996; no major culture or drainage changes observed. PLSS and survey control current as of 1964. Boundaries, other than corporate, verified 2000
North American Datum of 1983 (NAD 83). Projection and 1000-meter grid: Universal Transverse Mercator, zone 15 10 000-foot ticks: Missouri Coordinate System (west zone) 2 500-meter ticks: Kansas Coordinate System (north zone)
North American Datum of 1927 (NAD 27) is shown by dashed corner ticks. The values of the shift between NAD 83 and NAD 27 for 7.5-minute intersections are obtainable from National Geodetic Survey NADCON software



SCALE 1:24 000
CONTOUR INTERVAL 10 FEET
SUPPLEMENTARY CONTOUR INTERVAL 5 FEET
NATIONAL GEODETIC VERTICAL DATUM OF 1929
TO CONVERT FROM FEET TO METERS, MULTIPLY BY 0.3048
THIS MAP COMPLES WITH NATIONAL MAP ACCURACY STANDARDS
FOR SALE BY U.S. GEOLOGICAL SURVEY, P.O. BOX 25286, DENVER, COLORADO 80225
AND DIVISION OF GEOLOGY AND LAND SURVEY
MISSOURI DEPARTMENT OF NATURAL RESOURCES, ROLLA, MISSOURI 65401
AND KANSAS GEOLOGICAL SURVEY, LAWRENCE, KANSAS 66044
A FOLDER DESCRIBING TOPOGRAPHIC MAPS AND SYMBOLS IS AVAILABLE ON REQUEST



QUADRANGLE LOCATION

1	2	3	1 Platte City
2	3	4	2 Fairview
3	4	5	3 Neosho
4	5	6	4 Waukomis
5	6	7	5 North Kansas City
6	7	8	6 Edwardsville
7	8		7 Shawnee
8			8 Kansas City

ADJOINING 7.5' QUADRANGLE NAMES

ROAD CLASSIFICATION
Primary highway
hard surface
improved surface
Secondary highway
hard surface
unimproved road
Interstate Route
U.S. Route
State Route

PARKVILLE, MO-KS

1996

NIMA 7062 II NW-SERIES V879

