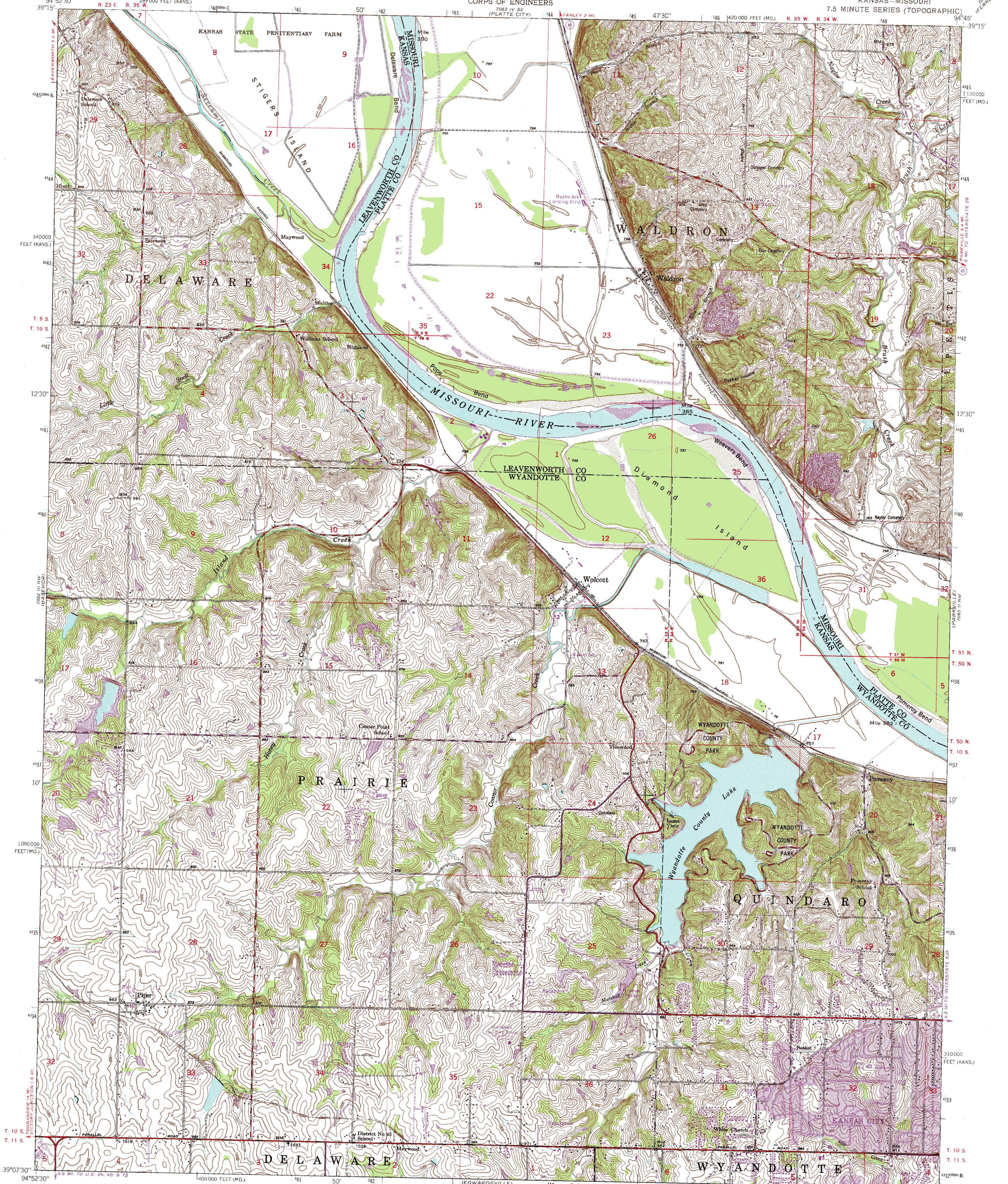


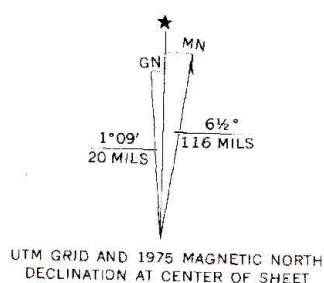
UNITED STATES
DEPARTMENT OF THE INTERIOR
GEOLOGICAL SURVEY

UNITED STATES
DEPARTMENT OF THE ARMY
CORPS OF ENGINEERS

WOLCOTT QUADRANGLE
KANSAS-MISSOURI
7.5 MINUTE SERIES (TOPOGRAPHIC)

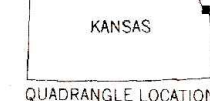


Mapped, edited, and published by the Geological Survey
Control by Missouri River Commission,
USC&GS, and USGS
Topography from aerial photographs by multiplex methods 1948
and by plane-table surveys 1934
Aerial photographs taken 1947. Field check 1948
Polyconic projection. 1927 North American datum
10,000-foot grids based on Kansas coordinate system,
north zone, and Missouri coordinate system, west zone
1000-metre Universal Transverse Mercator grid ticks,
zone 15, shown in blue. 1927 North American datum
Revisions shown in purple compiled from aerial photographs
taken 1970 and 1975. This information not field checked
Purple tint indicates extension of urban areas



SCALE 1:24,000
CONTOUR INTERVAL 10 FEET
NATIONAL GEODETIC VERTICAL DATUM OF 1929

THIS MAP COMPLIES WITH NATIONAL MAP ACCURACY STANDARDS
FOR SALE BY U.S. GEOLOGICAL SURVEY, DENVER, COLORADO 80225, OR RESTON, VIRGINIA 22092,
STATE GEOLOGICAL SURVEY, LAWRENCE, KANSAS 66044,
AND THE DIVISION OF RESEARCH AND TECHNICAL INFORMATION
MISSOURI DEPARTMENT OF NATURAL RESOURCES, ROLLA, MISSOURI 65401
A FOLDER DESCRIBING TOPOGRAPHIC MAPS AND SYMBOLS IS AVAILABLE ON REQUEST



To place on the predicted North American Datum 1983,
move the projection lines 3 meters north and
20 meters east as shown by dashed corner ticks

ROAD CLASSIFICATION
Heavy-duty ——— Light-duty ———
Medium-duty ——— Unimproved dirt ———
State Route

WOLCOTT, KANS.-MO.
39094-B7-TF-024
1948

PHOTOREVISED 1970 AND 1975
DMA 7062 III NE-SERIES V878