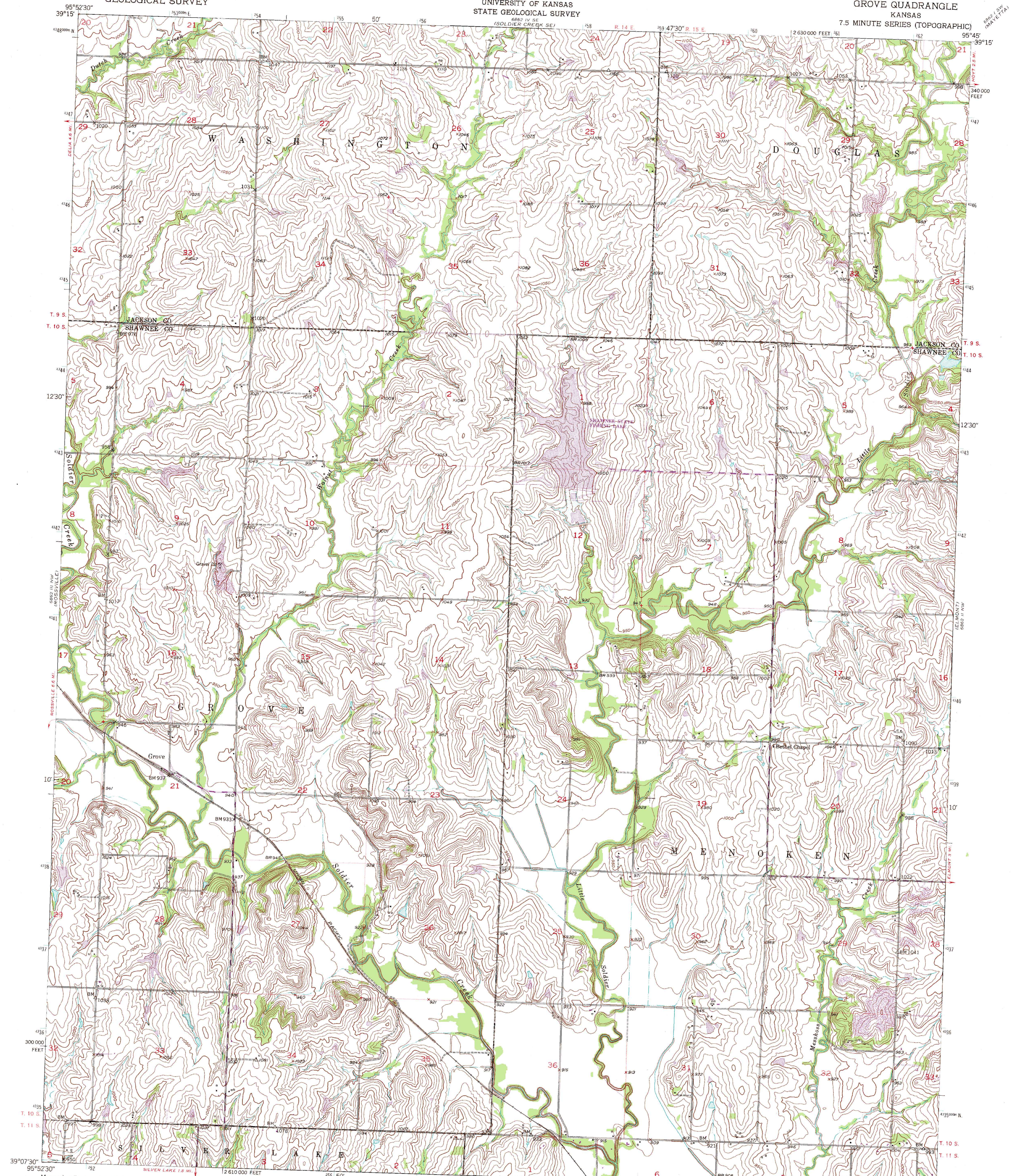


UNITED STATES  
DEPARTMENT OF THE INTERIOR  
GEOLOGICAL SURVEY

STATE OF KANSAS  
UNIVERSITY OF KANSAS  
STATE GEOLOGICAL SURVEY

GROVE QUADRANGLE  
KANSAS  
7.5 MINUTE SERIES (TOPOGRAPHIC)



Maped, edited, and published by the Geological Survey  
Control by USGS and USC&GS

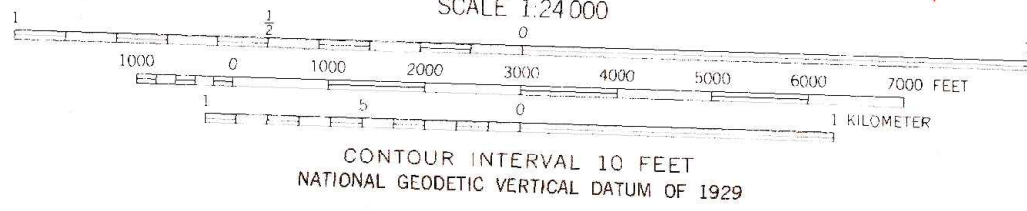
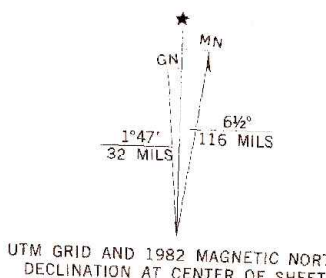
Topography from aerial photographs by Kelsh plotter  
Aerial photographs taken 1948. Field check 1952

Polyconic projection. 1927 North American datum  
10,000-foot grid based on Kansas coordinate system, north zone  
1000 meter Universal Transverse Mercator grid ticks,  
zone 15, shown in blue

To place on the predicted North American Datum 1983  
move the projection lines 3 meters north and  
23 meters east as shown by dashed corner ticks

There may be private inholdings within the boundaries of  
the National or State reservations shown on this map

Revisions shown in purple compiled from aerial photographs taken 1981  
and other sources. This information not field checked. Map edited 1982



ROAD CLASSIFICATION  
Heavy-duty... Light-duty...  
Medium-duty... Unimproved dirt...  
 U.S. Route State Route



GROVE, KANS.  
N3907.5-W9545/7.5

1952  
PHOTOREVISED 1982  
DMA 6862 III NE-SERIES V878

THIS MAP COMPLIES WITH NATIONAL MAP ACCURACY STANDARDS  
FOR SALE BY U.S. GEOLOGICAL SURVEY, DENVER, COLORADO 80225, OR RESTON, VIRGINIA 22082  
AND STATE GEOLOGICAL SURVEY, LAWRENCE, KANSAS 66044  
A FOLDER DESCRIBING TOPOGRAPHIC MAPS AND SYMBOLS IS AVAILABLE ON REQUEST