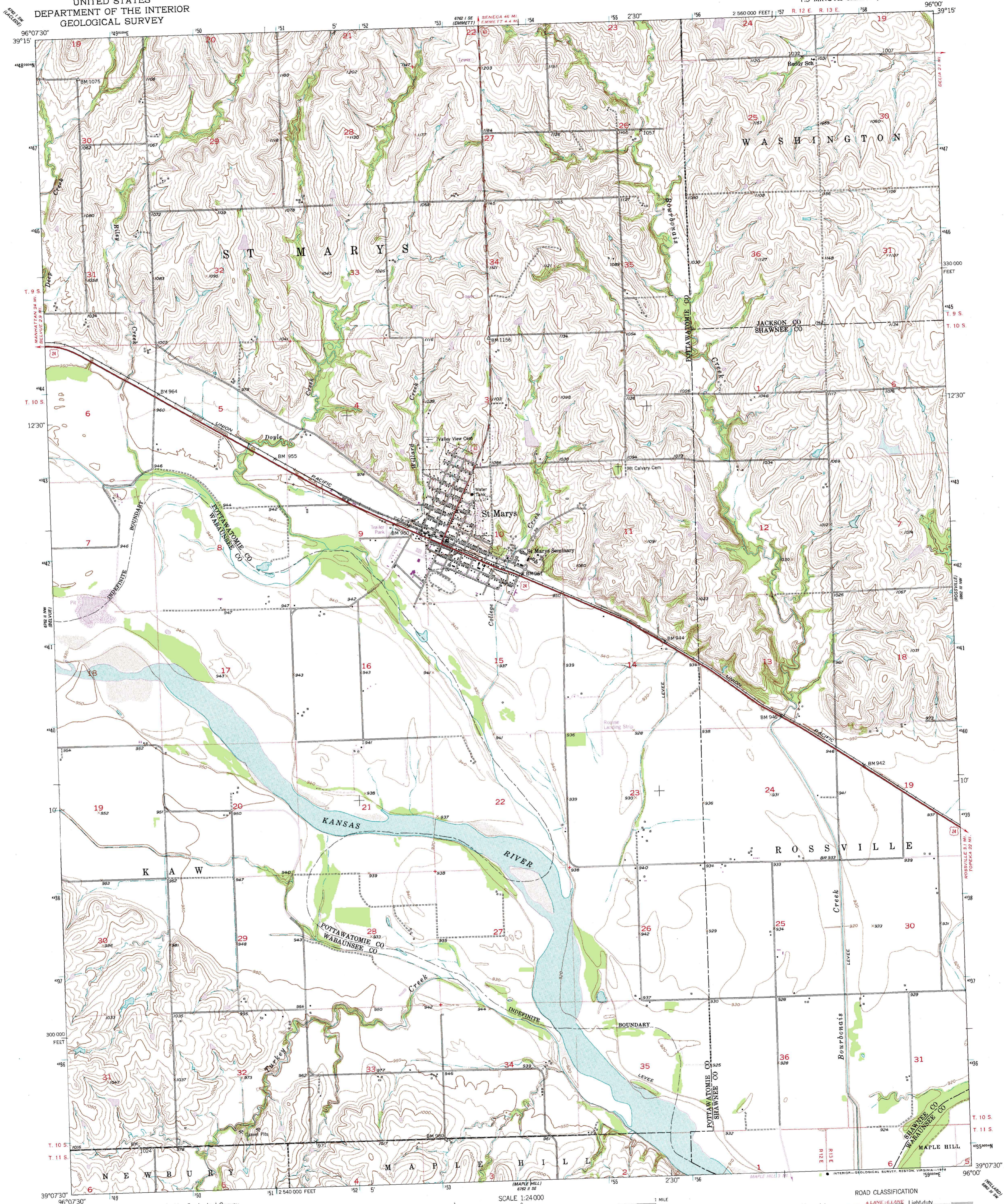


UNITED STATES  
DEPARTMENT OF THE INTERIOR  
GEOLOGICAL SURVEY

ST. MARYS QUADRANGLE  
KANSAS  
7.5 MINUTE SERIES (TOPOGRAPHIC)



Mapped, edited, and published by the Geological Survey as part of the Department of the Interior program for the development of the Missouri River Basin.

Control by USGS and USC&GS

Topography from aerial photographs by Ketch plotter and by plane-table surveys 1953. Aerial photographs taken 1951

Polyconic projection. 1927 North American datum 10,000-foot grid based on Kansas coordinate system, north zone

Dotted land lines by Bureau of Indian Affairs indicate approximate locations

1000-meter Universal Transverse Mercator grid ticks, zone 14, shown in blue

UTM GRID AND 1978 MAGNETIC NORTH DECLINATION AT CENTER OF SHEET

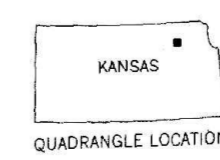
SCALE 1:24,000

1 2 3 4 5 6 7 8 9 10 11 12 13 14 15 16 17 18 19 20 21 22 23 24 25 26 27 28 29 30 31 32 33 34 35 36 37 38 39 40 41 42 43 44 45 46 47 48 49 50 51 52 53 54 55 56 57 58 59 60 61 62 63 64 65 66 67 68 69 70 71 72 73 74 75 76 77 78 79 80 81 82 83 84 85 86 87 88 89 90 91 92 93 94 95 96 97 98 99 100

CONTOUR INTERVAL 10 FEET  
NATIONAL GEODETIC VERTICAL DATUM OF 1929

THIS MAP COMPLIES WITH NATIONAL MAP ACCURACY STANDARDS FOR SALE BY U. S. GEOLOGICAL SURVEY, DENVER, COLORADO 80225, OR RESTON, VIRGINIA 22092 AND STATE GEOLOGICAL SURVEY, LAWRENCE, KANSAS 66044

A FOLDER DESCRIBING TOPOGRAPHIC MAPS AND SYMBOLS IS AVAILABLE ON REQUEST



ROAD CLASSIFICATION

Heavy-duty	4 LANE 6 LANE	Light-duty
Medium-duty	2 LANE 4 LANE	Unimproved dirt
U. S. Route		State Route

ST. MARYS, KANS. N3907.5-W9600/7.5

1953  
PHOTOREVISED 1978  
AMS 6762 II NE-SERIES V878