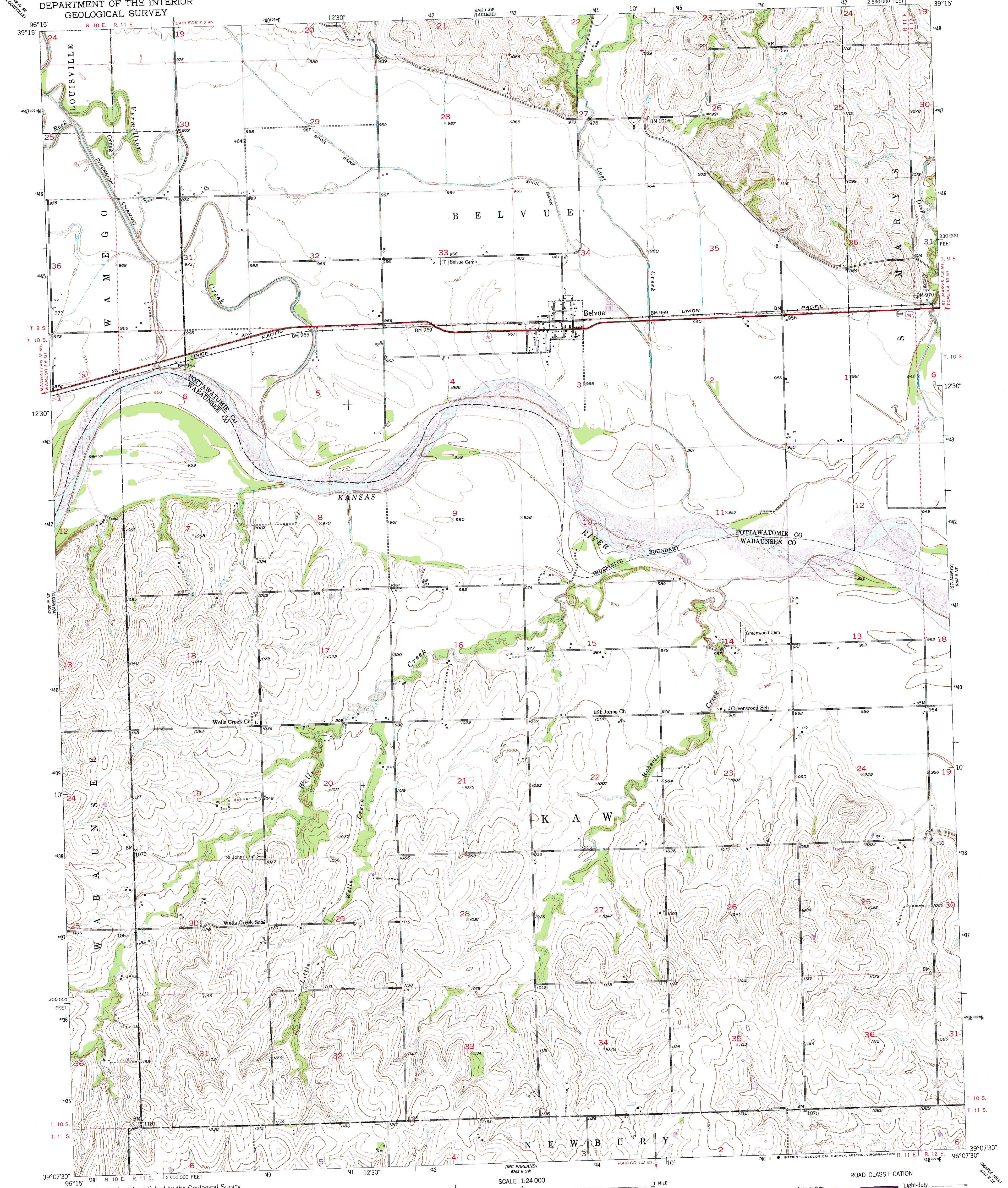
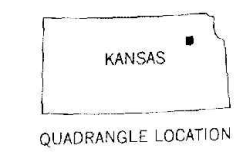
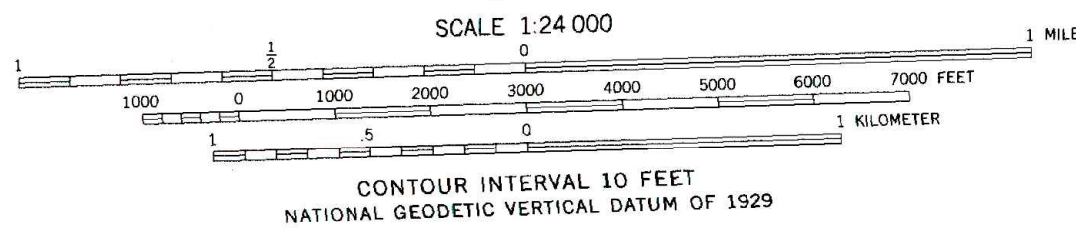
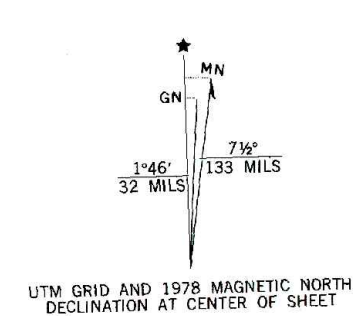


UNITED STATES  
DEPARTMENT OF THE INTERIOR  
GEOLOGICAL SURVEY

BELVUE QUADRANGLE  
KANSAS  
7.5 MINUTE SERIES (TOPOGRAPHIC)



Mapped, edited, and published by the Geological Survey  
as part of the Department of the Interior program  
for the development of the Missouri River Basin  
Control by USGS and USC&GS  
Topography from aerial photographs by photogrammetric methods  
and by plane-table surveys 1953. Aerial photographs taken 1951  
Polyconic projection. 1927 North American datum  
10,000-foot grid based on Kansas coordinate system,  
north zone  
Dotted land lines by Bureau of Indian Affairs  
indicate approximate locations  
1000-meter Universal Transverse Mercator grid ticks,  
zone 14, shown in blue



ROAD CLASSIFICATION

Heavy-duty	Light-duty
Medium-duty	Unimproved dirt
U. S. Route	State Route

THIS MAP COMPLIES WITH NATIONAL MAP ACCURACY STANDARDS  
FOR SALE BY U. S. GEOLOGICAL SURVEY, DENVER, COLORADO 80225, OR RESTON, VIRGINIA 22092  
AND STATE GEOLOGICAL SURVEY, LAWRENCE, KANSAS 66044  
A FOLDER DESCRIBING TOPOGRAPHIC MAPS AND SYMBOLS IS AVAILABLE ON REQUEST

Revisions shown in purple compiled in cooperation with  
State of Kansas agencies from aerial photographs taken  
1977. Map edited 1978. This information not field checked

BELVUE, KANS.  
N 39° 07' 30" - W 96° 07' 30" 7.5  
1953  
PHOTOREVISED 1978  
AMS 6762 II NW-SERIES V878