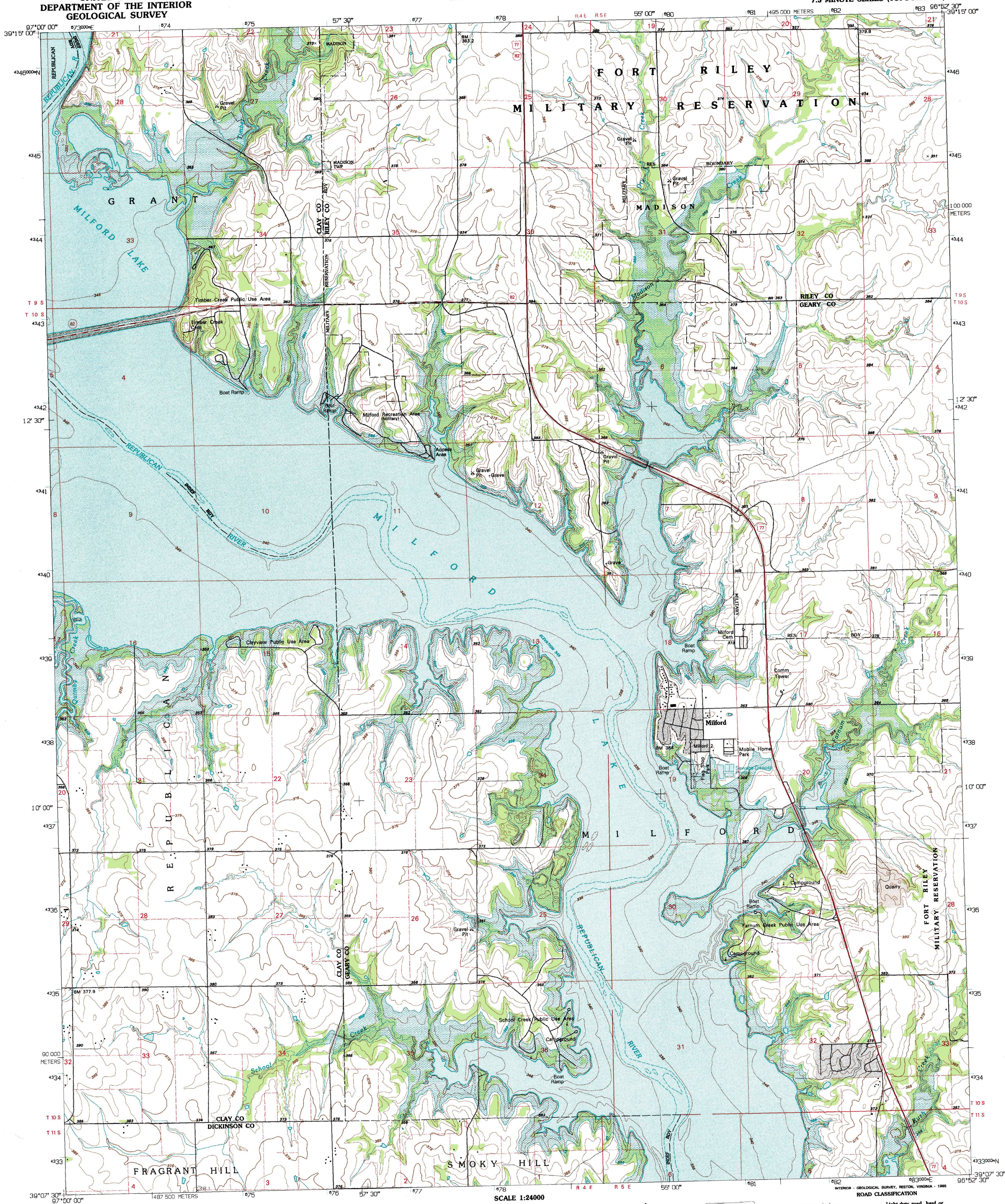


UNITED STATES
DEPARTMENT OF THE INTERIOR
GEOLOGICAL SURVEY

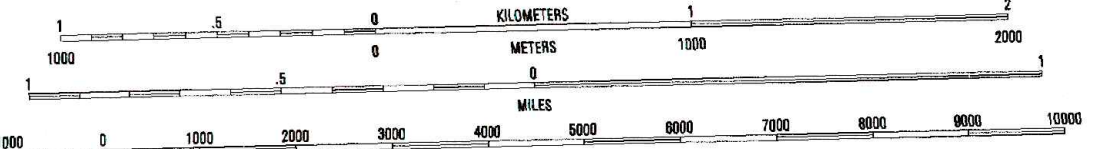
STATE OF KANSAS

MILFORD QUADRANGLE
KANSAS
7.5 MINUTE SERIES (TOPOGRAPHIC)



Produced by the United States Geological Survey
Compiled by photogrammetric methods from imagery dated 1978
Field checked 1980. Revised from imagery dated 1991
PLSS and survey control current as of 1980. Map edited 1995
Contours not revised
North American Datum of 1983 (NAD 83). Projection and
blue 1000-meter ticks: Universal Transverse Mercator, zone 14
2 500-meter ticks: Kansas Coordinate System of 1983 (north zone)
North American Datum of 1927 (NAD 27) is shown by dashed
corner ticks. The values of the shift between NAD 83 and NAD 27
for 7.5-minute intersections are obtainable from National Geodetic
Survey NADCON software
There may be private inholdings within the boundaries of
the National or State reservations shown on this map
Areas covered by dashed light-blue pattern
are subject to controlled inundation

UTM GRID AND 1983 MAGNETIC NORTH
DECLINATION AT CENTER OF SHEET



CONTOUR INTERVAL 5 METERS
NATIONAL GEODETIC VERTICAL DATUM OF 1929
CONTROL ELEVATIONS SHOWN TO THE NEAREST 0.1 METER
OTHER ELEVATIONS SHOWN TO THE NEAREST METER
TO CONVERT METERS TO FEET MULTIPLY BY 3.28084
TO CONVERT FEET TO METERS MULTIPLY BY 0.3048
THIS MAP COMPLEYS WITH NATIONAL MAP ACCURACY STANDARDS
FOR SALE BY U.S. GEOLOGICAL SURVEY, DENVER, COLORADO 80225, OR RESTON, VIRGINIA 22092
AND KANSAS GEOLOGICAL SURVEY, LAWRENCE, KANSAS 66044
A FOLDER DESCRIBING TOPOGRAPHIC MAPS AND SYMBOLS IS AVAILABLE ON REQUEST



QUADRANGLE LOCATION

1	2	3
4	5	6
7	8	

1 Clay Center SE
2 Bala
3 Riley
4 Wakarusa
5 Fort Riley NE
6 Upland
7 Milford Dam
8 Junction City

ADJOINING 7.5' QUADRANGLE NAMES

ROAD CLASSIFICATION
Primary highway
hard surface
Secondary highway
hard surface
Light-duty road, hard or
improved surface
Unimproved road

Interstate Route
U.S. Route
State Route

MILFORD, KS
39096-B8-TM-024

1991

DMA 6662 III NW-SERIES V878