

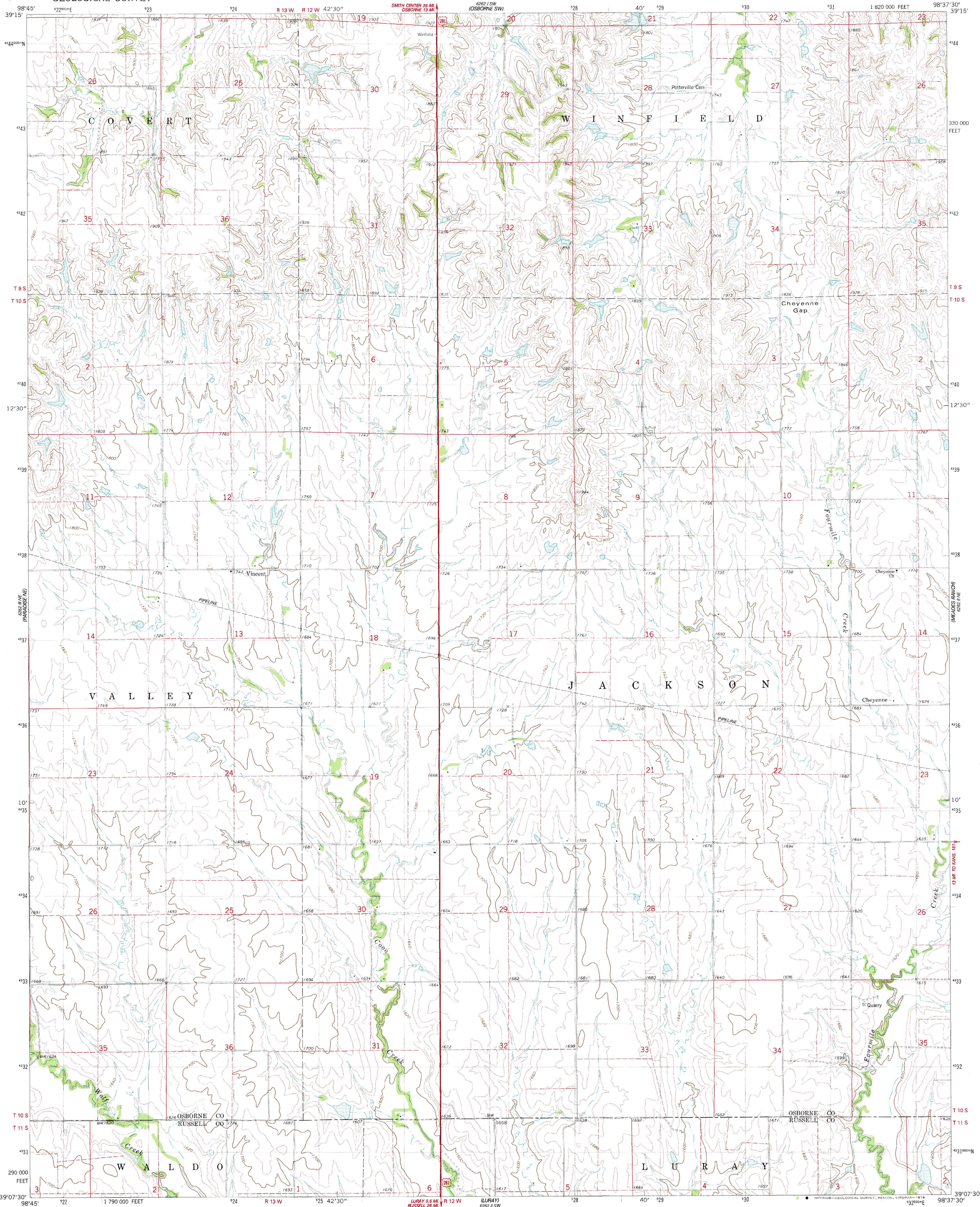
65° 34' E  
(OSBORNE)

UNITED STATES  
DEPARTMENT OF THE INTERIOR  
GEOLOGICAL SURVEY

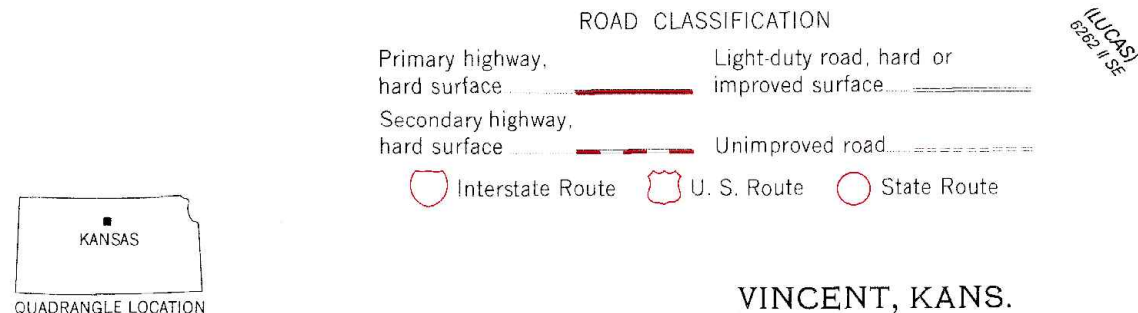
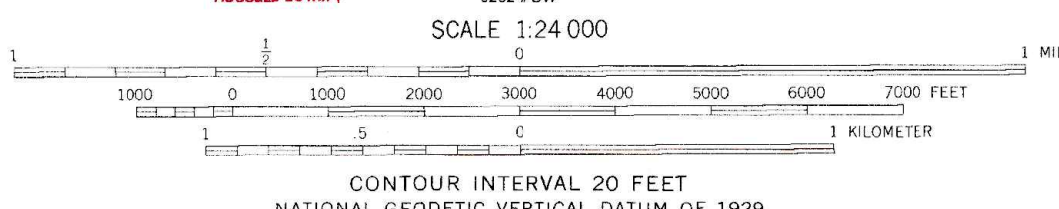
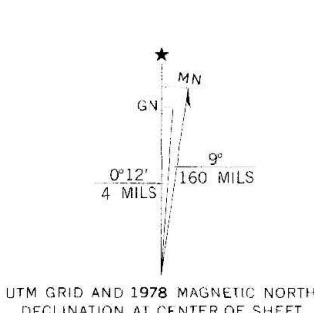


VINCENT QUADRANGLE  
KANSAS  
7.5 MINUTE SERIES (TOPOGRAPHIC)

65° 34' E  
(OSBORNE)



Maped, edited, and published by the Geological Survey  
Control by USGS and NOS/NOAA  
Topography by photogrammetric methods from aerial photographs  
taken 1974. Field checked 1975. Map edited 1978  
Projection and 10,000-foot grid ticks: Kansas coordinate  
system, north zone (Lambert conformal conic)  
1000-meter Universal Transverse Mercator grid, zone 14  
1927 North American datum  
Fine red dashed lines indicate selected fence and field lines where  
generally visible on aerial photographs. This information is unchecked



THIS MAP COMPLIES WITH NATIONAL MAP ACCURACY STANDARDS  
FOR SALE BY U.S. GEOLOGICAL SURVEY, DENVER, COLORADO 80225, OR RESTON, VIRGINIA 22092  
AND BY THE STATE GEOLOGICAL SURVEY, LAWRENCE, KANSAS 66044  
A FOLDER DESCRIBING TOPOGRAPHIC MAPS AND SYMBOLS IS AVAILABLE ON REQUEST

VINCENT, KANS.  
N3907.5 - W9837.5/7.5  
1978

AMS 6262 II NW—SERIES V678