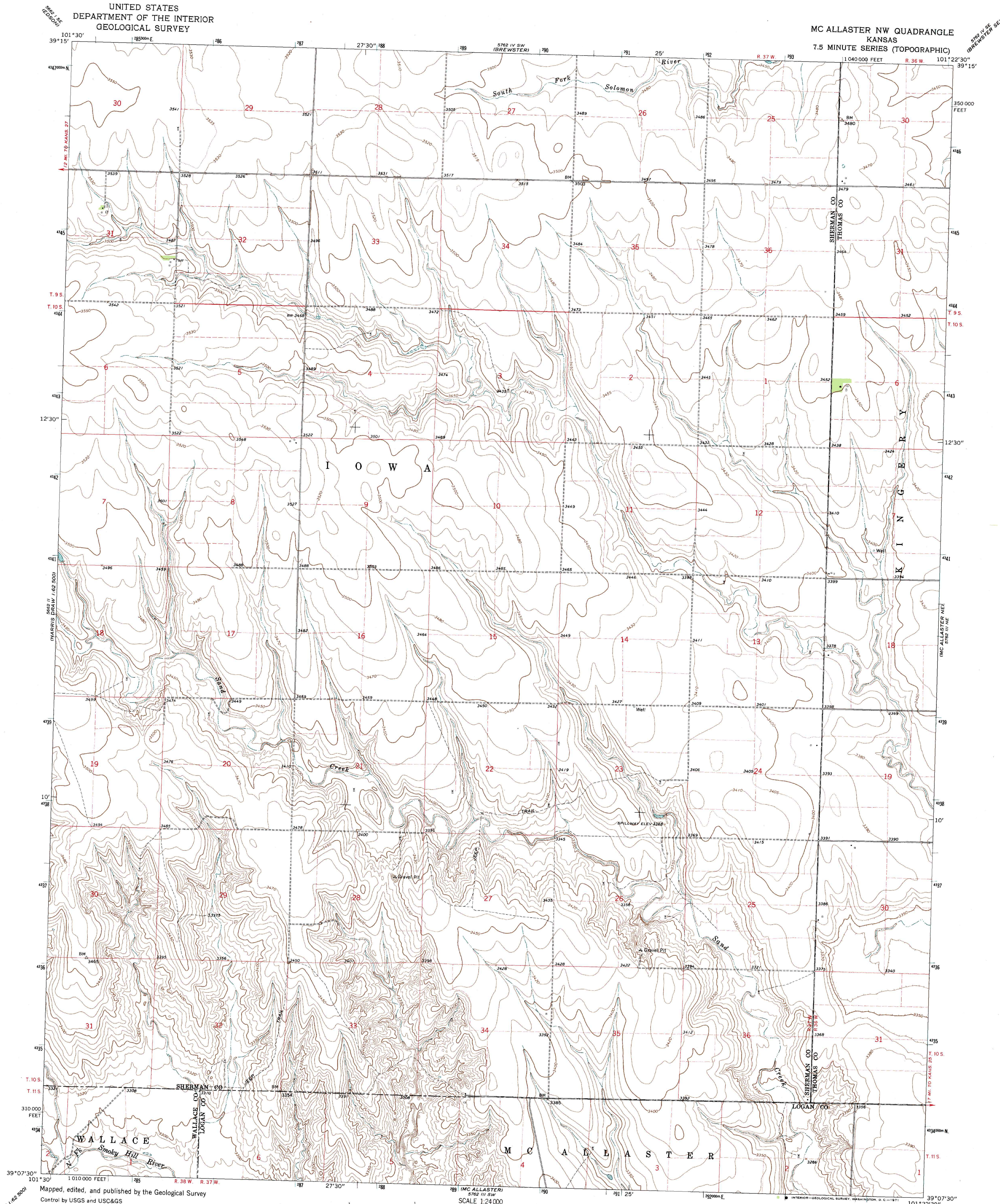
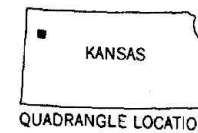
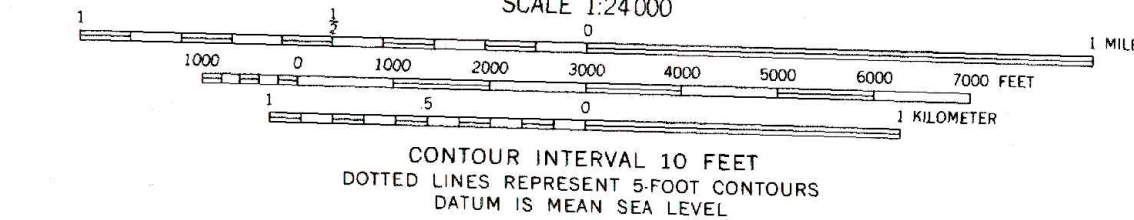
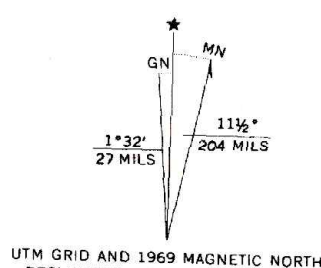


UNITED STATES
DEPARTMENT OF THE INTERIOR
GEOLOGICAL SURVEY

MC ALLASTER NW QUADRANGLE
KANSAS
7.5 MINUTE SERIES (TOPOGRAPHIC)



Mapped, edited, and published by the Geological Survey
Control by USGS and USC&GS
Topography by photogrammetric methods from aerial
photographs taken 1966. Field checked 1969.
Polyconic projection. 1927 North American datum.
10,000-foot grid based on Kansas coordinate system, north zone
1000-meter Universal Transverse Mercator grid ticks,
zone 14, shown in blue.
Fine red dashed lines indicate selected fence and field lines where
generally visible on aerial photographs. This information is unchecked.



ROAD CLASSIFICATION
Light-duty road, all weather, Unimproved road, fair or dry
improved surface weather

THIS MAP COMPLIES WITH NATIONAL MAP ACCURACY STANDARDS
FOR SALE BY U.S. GEOLOGICAL SURVEY, DENVER, COLORADO 80225, OR WASHINGTON, D.C. 20242
AND BY THE STATE GEOLOGICAL SURVEY, LAWRENCE, KANSAS 66044
A FOLDER DESCRIBING TOPOGRAPHIC MAPS AND SYMBOLS IS AVAILABLE ON REQUEST

MC ALLASTER NW, KANS.
N3907.5-W10122.5/7.5

1969
AMS 5762 III NW-SERIES V878