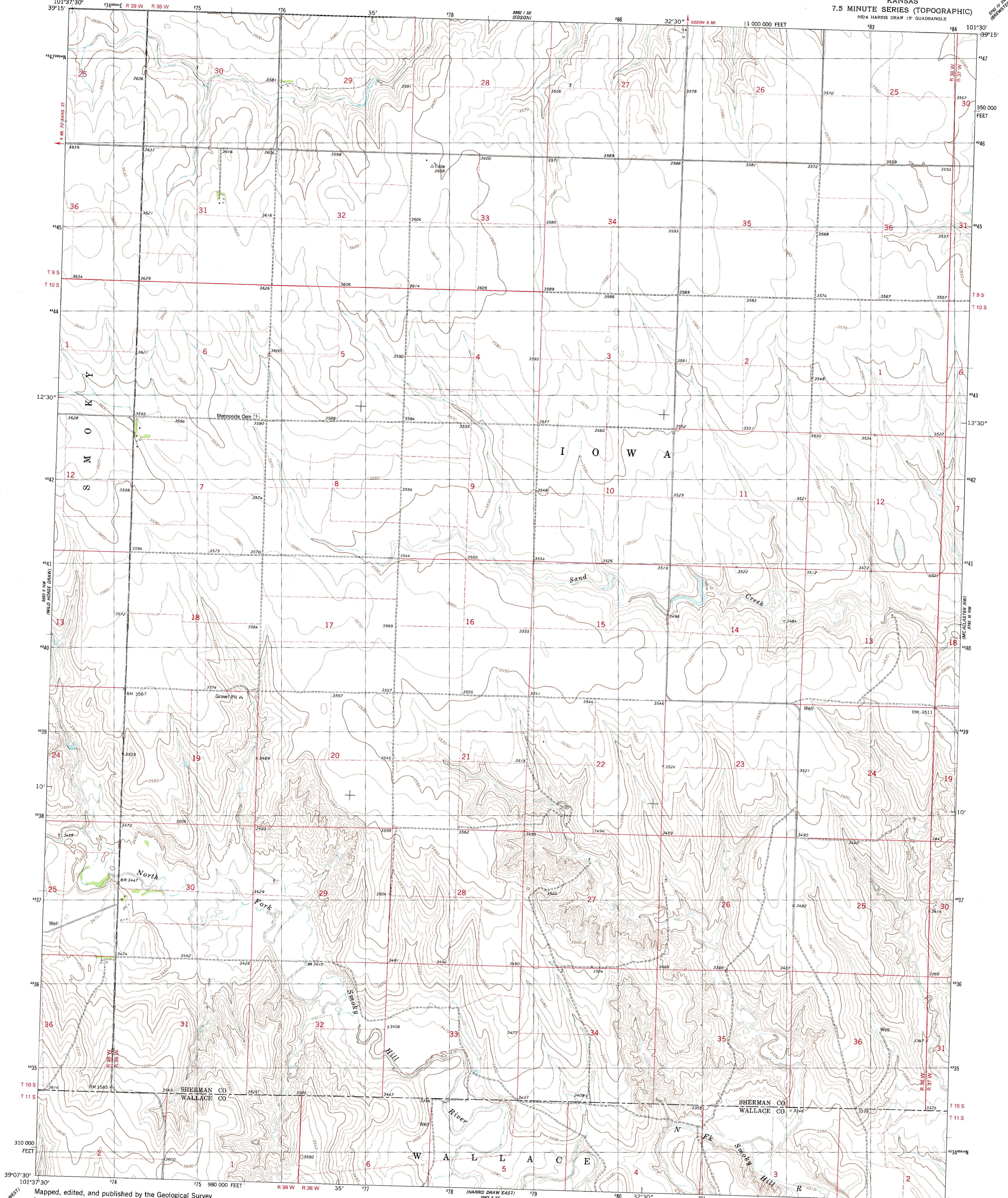


UNITED STATES
DEPARTMENT OF THE INTERIOR
GEOLOGICAL SURVEY

HARRIS DRAW NE QUADRANGLE
KANSAS
7.5 MINUTE SERIES (TOPOGRAPHIC)
NE/4 HARRIS DRAW 15' QUADRANGLE



Mapped, edited, and published by the Geological Survey
in cooperation with State of Kansas agencies
Control by USGS and NOS/NOAA

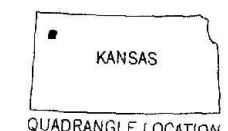
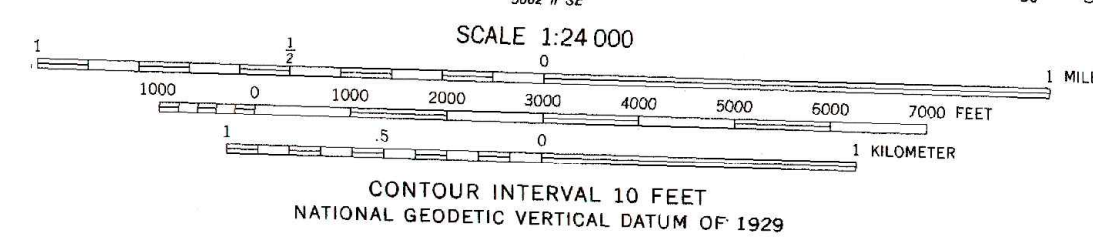
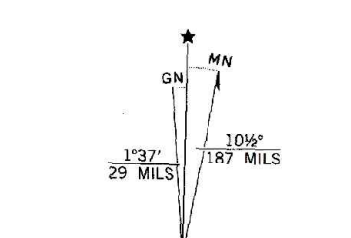
Topography by photogrammetric methods from aerial photographs
taken 1957. Revised from aerial photographs taken 1977
Field checked 1978. Map edited 1979

Projection and 10,000-foot grid ticks: Kansas coordinate
system, north zone (Lambert conformal conic)

1000-meter Universal Transverse Mercator grid, zone 14
1927 North American datum

To place on the predicted North American Datum 1983
move the projection lines 3 meters north and
39 meters east as shown by dashed corner ticks

Fine red dashed lines indicate selected fence and field lines where
generally visible on aerial photographs. This information is unchecked



ROAD CLASSIFICATION
Primary highway, hard surface
Secondary highway, hard surface
Interstate Route
U. S. Route
State Route
Light-duty road, hard or improved surface
Unimproved road

HARRIS DRAW NE, KANS.
NE/4 HARRIS DRAW 15' QUADRANGLE
N3907.5-W10130/7.5

1979

DMA 5662 II NE-SERIES V878