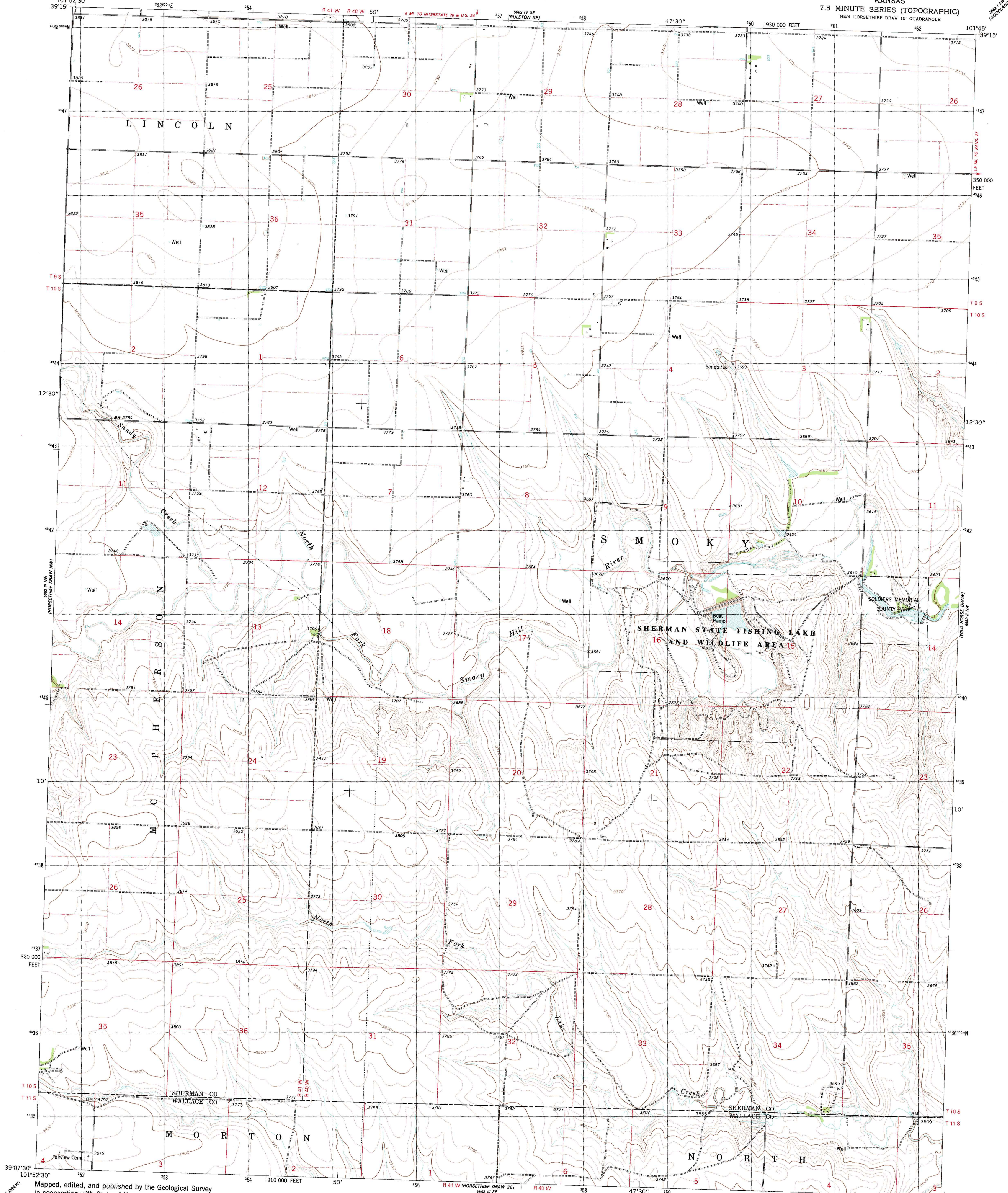
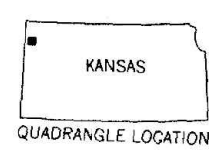
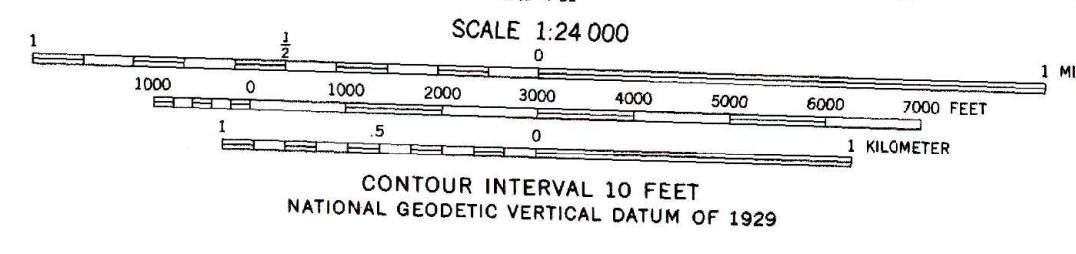
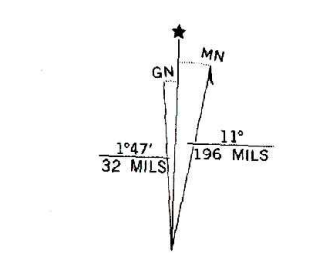


UNITED STATES
DEPARTMENT OF THE INTERIOR
GEOLOGICAL SURVEY

HORSETHIEF DRAW NE QUADRANGLE
KANSAS
7.5 MINUTE SERIES (TOPOGRAPHIC)
NE/4 HORSETHIEF DRAW 15' QUADRANGLE



Mapped, edited, and published by the Geological Survey
in cooperation with State of Kansas agencies
Control by USGS and NOS/NOAA
Topography by photogrammetric methods from aerial photographs
taken 1957. Revised from aerial photographs taken 1977
Field checked 1978. Map edited 1979
Projection and 10,000-foot grid ticks: Kansas coordinate
system, north zone (Lambert conformal conic)
1000-meter Universal Transverse Mercator grid, zone 14
1927 North American datum
To place on the predicted North American Datum 1983
move the projection lines 3 meters north and
39 meters east as shown by dashed corner ticks
There may be private inholdings within the boundaries of
the National or State reservations shown on this map



ROAD CLASSIFICATION
Primary highway, hard surface
Secondary highway, hard surface
Unimproved road
Interstate Route
U. S. Route
State Route
Light-duty road, hard or improved surface
Unimproved road
Interstate Route
U. S. Route
State Route

HORSETHIEF DRAW NE, KANS.
NE/4 HORSETHIEF DRAW 15' QUADRANGLE
N3907.5-W10145/7.5