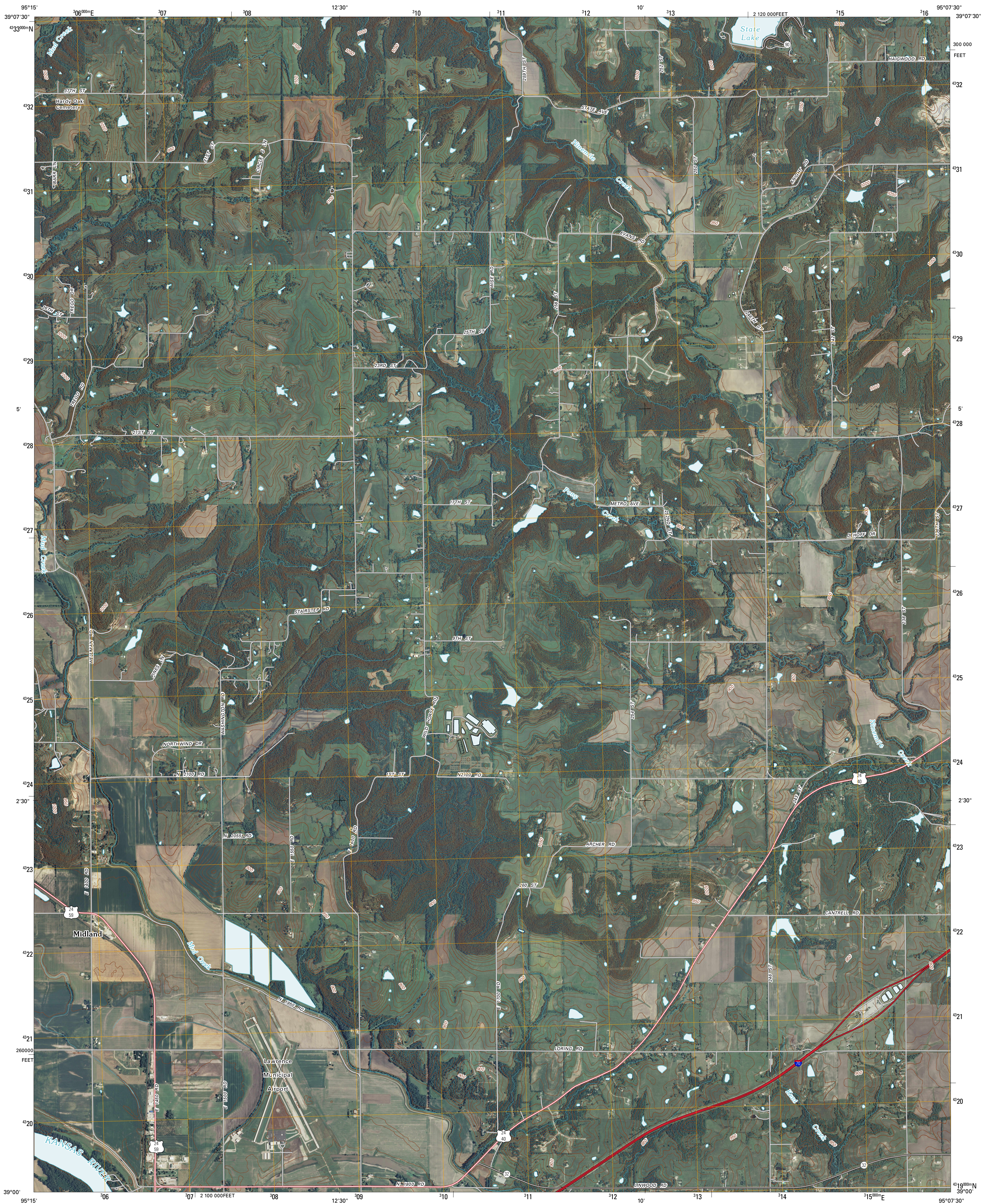




U.S. DEPARTMENT OF THE INTERIOR
U. S. GEOLOGICAL SURVEY

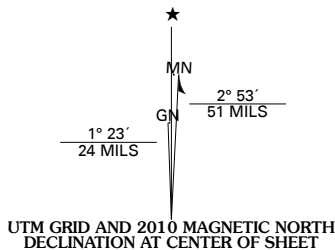


MIDLAND QUADRANGLE
KANSAS
7.5-MINUTE SERIES



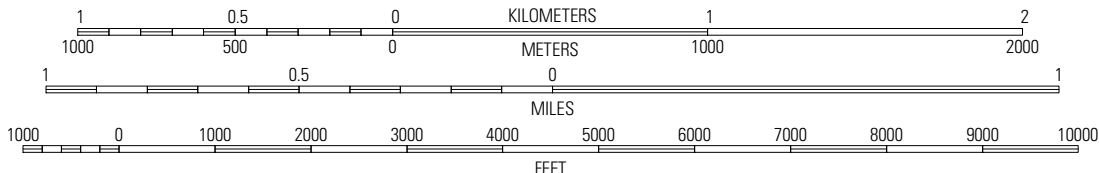
Produced by the United States Geological Survey
North American Datum of 1983 (NAD83)
World Geodetic System of 1984 (WGS84). Projection and
1 000-meter grid: Universal Transverse Mercator, Zone 15S
10 000-foot ticks: Kansas Coordinate System of 1983
(north zone)

Imagery.....NAIP, June 2008
Roads.....National Transportation Dataset, 2004 - 2006
Names.....GNIS, 2008
Hydrography.....National Hydrography Dataset, 2008
Contours.....National Elevation Dataset, 2008



U.S. National Grid
100,000-m Square ID
UD
Grid Zone Designation
15S

SCALE 1:24 000



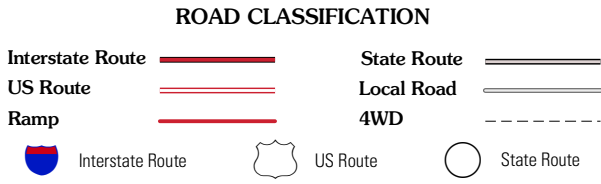
CONTOUR INTERVAL 10 FEET

This map was produced to conform with version 0.5.10 of the
draft USGS Standards for 7.5-Minute Quadrangle Maps.
A metadata file associated with this product is also draft version 0.5.10



Oskaloosa	McLouth	Jarbalo
Williamstown	Midland	Tonganoxie
Lawrence West	Lawrence East	Endora

ADJOINING 7.5' QUADRANGLES



MIDLAND, KS
2010