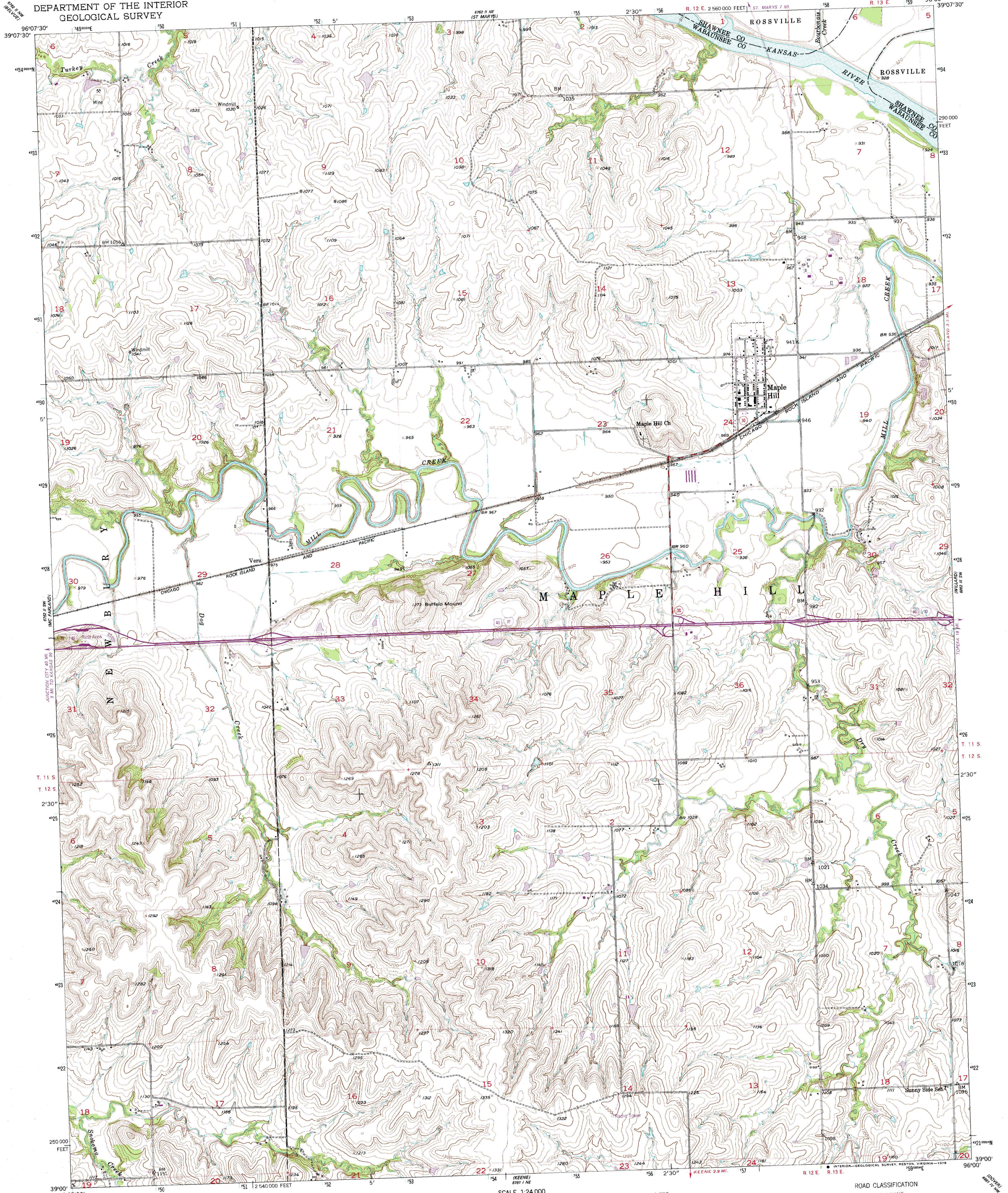


UNITED STATES
DEPARTMENT OF THE INTERIOR
GEOLOGICAL SURVEY

MAPLE HILL QUADRANGLE
KANSAS
7.5 MINUTE SERIES (TOPOGRAPHIC)



Mapped, edited, and published by the Geological Survey as part of the Department of the Interior program for the development of the Missouri River Basin.

Control by USGS and USC&GS

Topography from aerial photographs by Ketch plotter

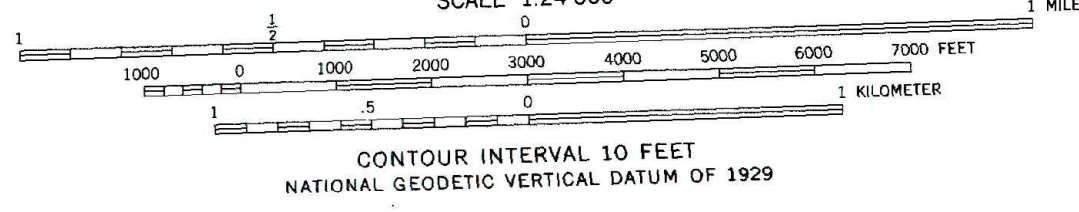
Aerial photographs taken 1951. Field check 1952-1953

Polyconic projection. 1927 North American datum

10,000-foot grid based on Kansas coordinate system, north zone

Dotted land lines by Bureau of Indian Affairs indicate approximate locations

1000-meter Universal Transverse Mercator grid ticks, zone 14, shown in blue

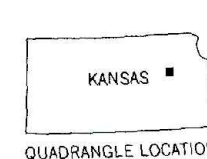


ROAD CLASSIFICATION

Heavy-duty 4 LANE 16 LANE Light-duty 4 LANE 16 LANE

Medium-duty 4 LANE 16 LANE Unimproved dirt

U. S. Route Interstate Route



THIS MAP COMPLIES WITH NATIONAL MAP ACCURACY STANDARDS FOR SALE BY U. S. GEOLOGICAL SURVEY, DENVER, COLORADO 80225 OR RESTON, VIRGINIA 22092 AND STATE GEOLOGICAL SURVEY, LAWRENCE, KANSAS 66044

A FOLDER DESCRIBING TOPOGRAPHIC MAPS AND SYMBOLS IS AVAILABLE ON REQUEST

Revisions shown in purple compiled in cooperation with State of Kansas agencies from aerial photographs taken 1977. Map edited 1978. This information not field checked

MAPLE HILL, KANS.
N 3900-W 9600/7.5

1953
PHOTOREVISED 1978
AMS 6762 II SE-SERIES V878