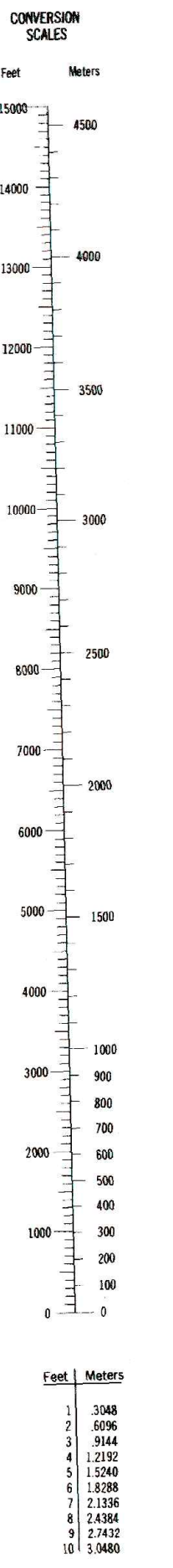
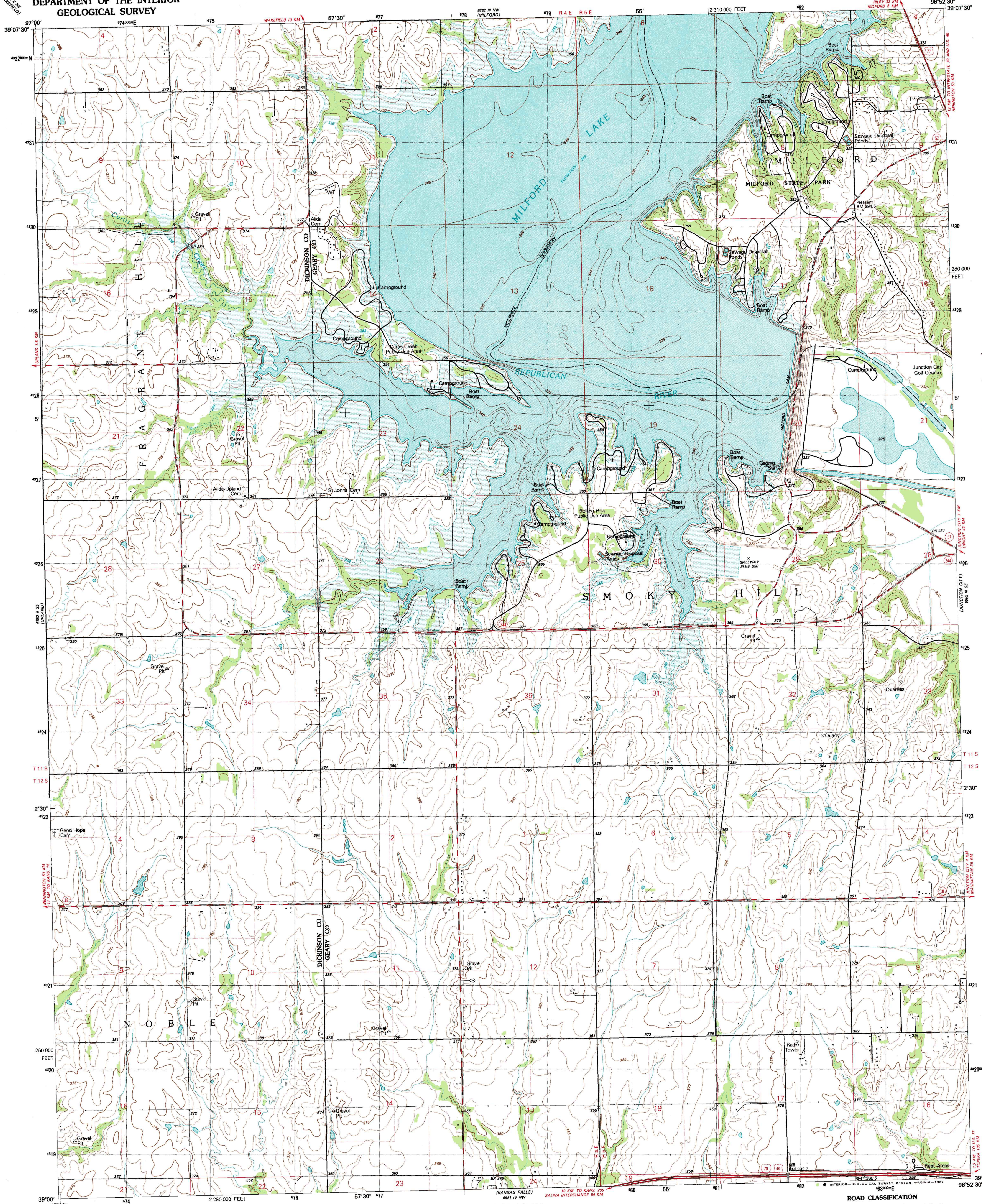


UNITED STATES
DEPARTMENT OF THE INTERIOR
GEOLOGICAL SURVEY

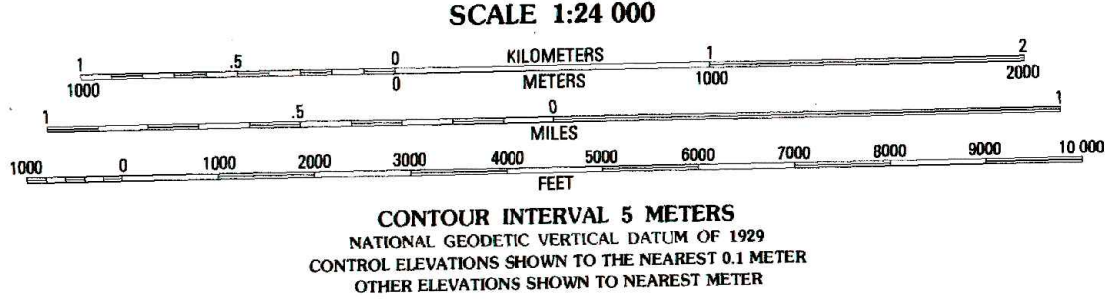
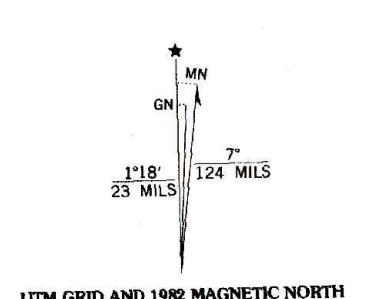
STATE OF KANSAS

MILFORD DAM QUADRANGLE
KANSAS
7.5 MINUTE SERIES (TOPOGRAPHIC)

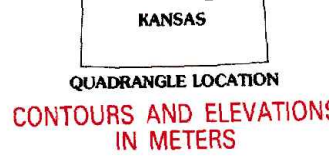
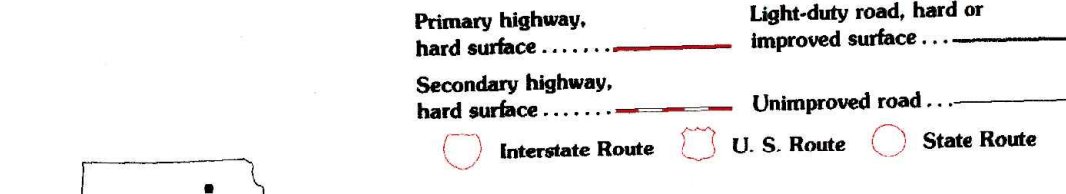


To convert feet to meters
multiply by .3048
To convert meters to feet
multiply by 3.2808

Produced by the United States Geological Survey
in cooperation with State of Kansas agencies
Control by USGS and NOS/NOAA
Topography by photogrammetric methods from aerial photographs
taken 1978. Field checked 1980. Map edited 1982
Superimposed Aids map dated 1955
Underwater contours in Milford Lake interpolated from
contour information taken from the Aids 1955 map
Projection and 10,000-foot grid ticks: Kansas coordinate
system, north zone (Lambert conformal conic)
1927 North American Datum
To place on the predicted North American Datum 1983
move the projection lines 2 meters north and
26 meters east as shown by dashed corner ticks
There may be private inholdings within the boundaries of
the National or State reservations shown on this map
Areas covered by dashed light-blue pattern
are subject to controlled inundation
Fine red dashed lines indicate selected fence and field lines where
generally visible on aerial photographs. This information is unchecked



CONTOUR INTERVAL 5 METERS
NATIONAL GEODETIC VERTICAL DATUM OF 1929
CONTROL ELEVATIONS SHOWN TO THE NEAREST 0.1 METER
OTHER ELEVATIONS SHOWN TO NEAREST METER
THIS MAP COMPLIES WITH NATIONAL MAP ACCURACY STANDARDS
FOR SALE BY U.S. GEOLOGICAL SURVEY, DENVER, COLORADO 80225 OR RESTON, VIRGINIA 22092
AND BY STATE GEOLOGICAL SURVEY LAWRENCE, KANSAS 66044
A FOLDER DESCRIBING TOPOGRAPHIC MAPS AND SYMBOLS IS AVAILABLE ON REQUEST



MILFORD DAM, KANS.
N3900-W9652.5/7.5
1982
DMA 6662 III SW-SERIES V878