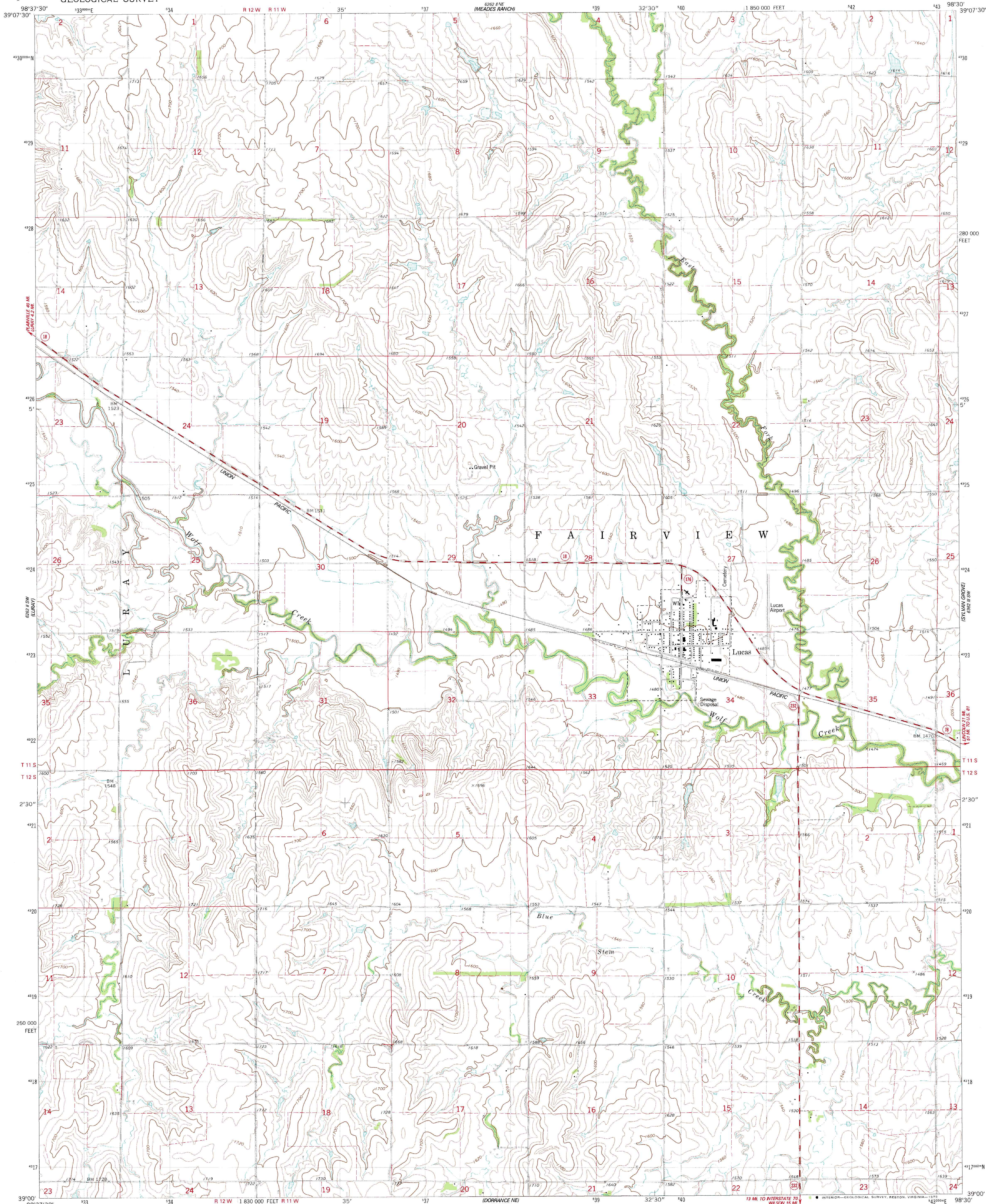


6262 II NE
1:24,000
(7.5 MIN)

UNITED STATES
DEPARTMENT OF THE INTERIOR
GEOLOGICAL SURVEY

LUCAS QUADRANGLE
KANSAS—RUSSELL CO.
7.5 MINUTE SERIES (TOPOGRAPHIC)

6262 II NW
1:24,000
(7.5 MIN)



Mapped, edited, and published by the Geological Survey

Control by USGS and NOS/NOAA

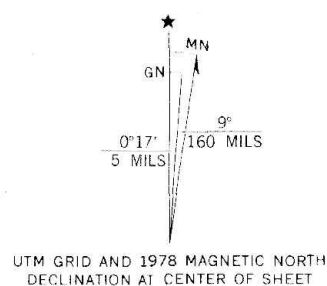
Topography by photogrammetric methods from aerial photographs
taken 1974. Field checked 1975. Map edited 1978

Projection and 10,000-foot grid ticks: Kansas coordinate
system, north zone (Lambert conformal conic)

1000-meter Universal Transverse Mercator grid, zone 14

1927 North American datum

Fine red dashed lines indicate selected fence and field lines where
generally visible on aerial photographs. This information is unchecked



SCALE 1:24,000

1 1000 0 1000 2000 3000 4000 5000 6000 7000 FEET

1 1 0.5 0.25 KILOMETER

CONTOUR INTERVAL 20 FEET

DOTTED LINES REPRESENT 10-FOOT CONTOURS

NATIONAL GEODETIC VERTICAL DATUM OF 1929

THIS MAP COMPLIES WITH NATIONAL MAP ACCURACY STANDARDS
FOR SALE BY U.S. GEOLOGICAL SURVEY, DENVER, COLORADO 80225, OR RESTON, VIRGINIA 22092

AND STATE GEOLOGICAL SURVEY, LAWRENCE, KANSAS 66044

A FOLDER DESCRIBING TOPOGRAPHIC MAPS AND SYMBOLS IS AVAILABLE ON REQUEST



ROAD CLASSIFICATION

Primary highway, hard surface

Secondary highway, hard surface

Light-duty road, hard or improved surface

Unimproved road

Interstate Route U. S. Route State Route

LUCAS, KANS.

N3900—W9830/7.5

1978

AMS 6262 II SE—SERIES V878