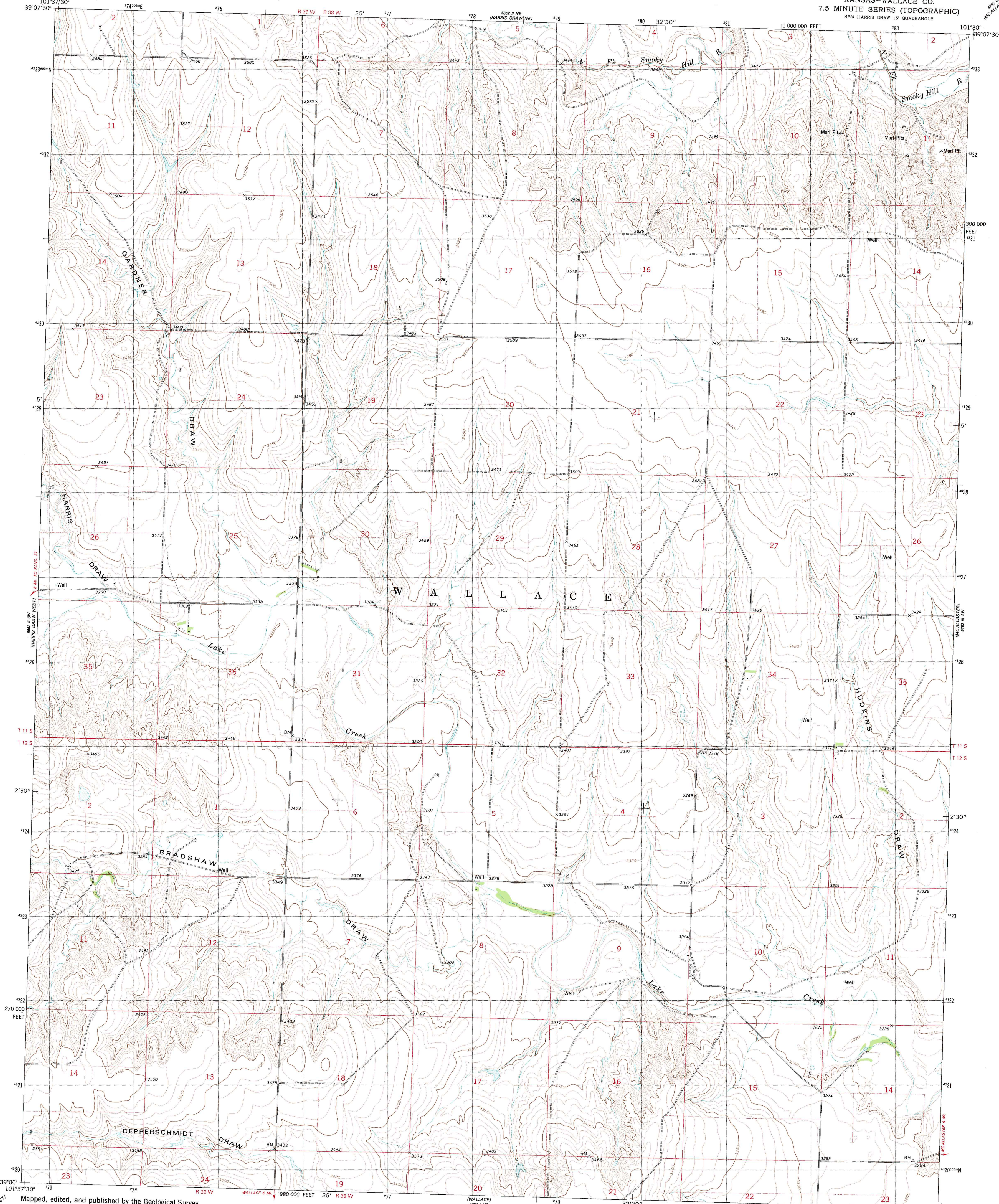


UNITED STATES
DEPARTMENT OF THE INTERIOR
GEOLOGICAL SURVEY

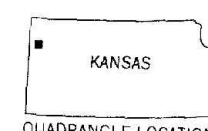
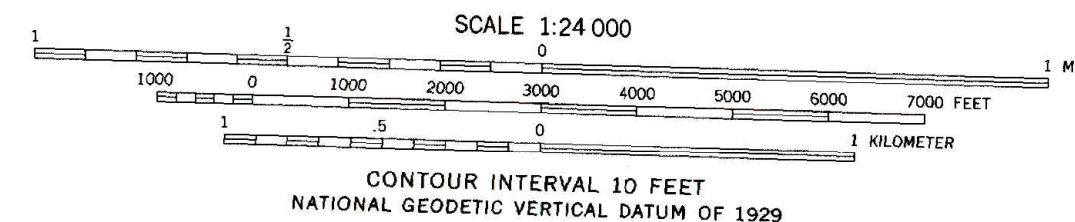
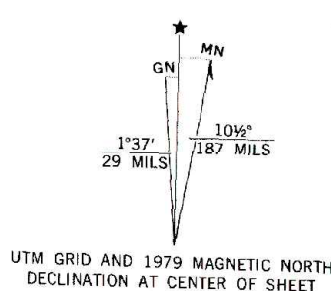
HARRIS DRAW EAST QUADRANGLE
KANSAS-WALLACE CO.
7.5 MINUTE SERIES (TOPOGRAPHIC)
SE 1/4 HARRIS DRAW 15' QUADRANGLE



Mapped, edited, and published by the Geological Survey
in cooperation with the State of Kansas agencies
Control by USGS and NOS/NOAA

Topography by photogrammetric methods from aerial photographs
taken 1957. Revised from aerial photographs taken 1977
Field checked 1978. Map edited 1979

Projection and 10,000-foot grid ticks: Kansas coordinate
system, north zone (Lambert conformal conic)
1927 North American datum
To place on the predicted North American Datum 1983
move the projection lines 3 meters north and
39 meters east as shown by dashed corner ticks
Fine red dashed lines indicate selected fence and field lines where
generally visible on aerial photographs. This information is unchecked



ROAD CLASSIFICATION	
Primary highway, hard surface	Light-duty road, hard or improved surface
Secondary highway, hard surface	Unimproved road
Interstate Route	U. S. Route
	State Route

HARRIS DRAW EAST, KANS.
SE 1/4 HARRIS DRAW 15' QUADRANGLE
N3900-W10130/7.5

1979

DMA 5662 II SE-SERIES V878