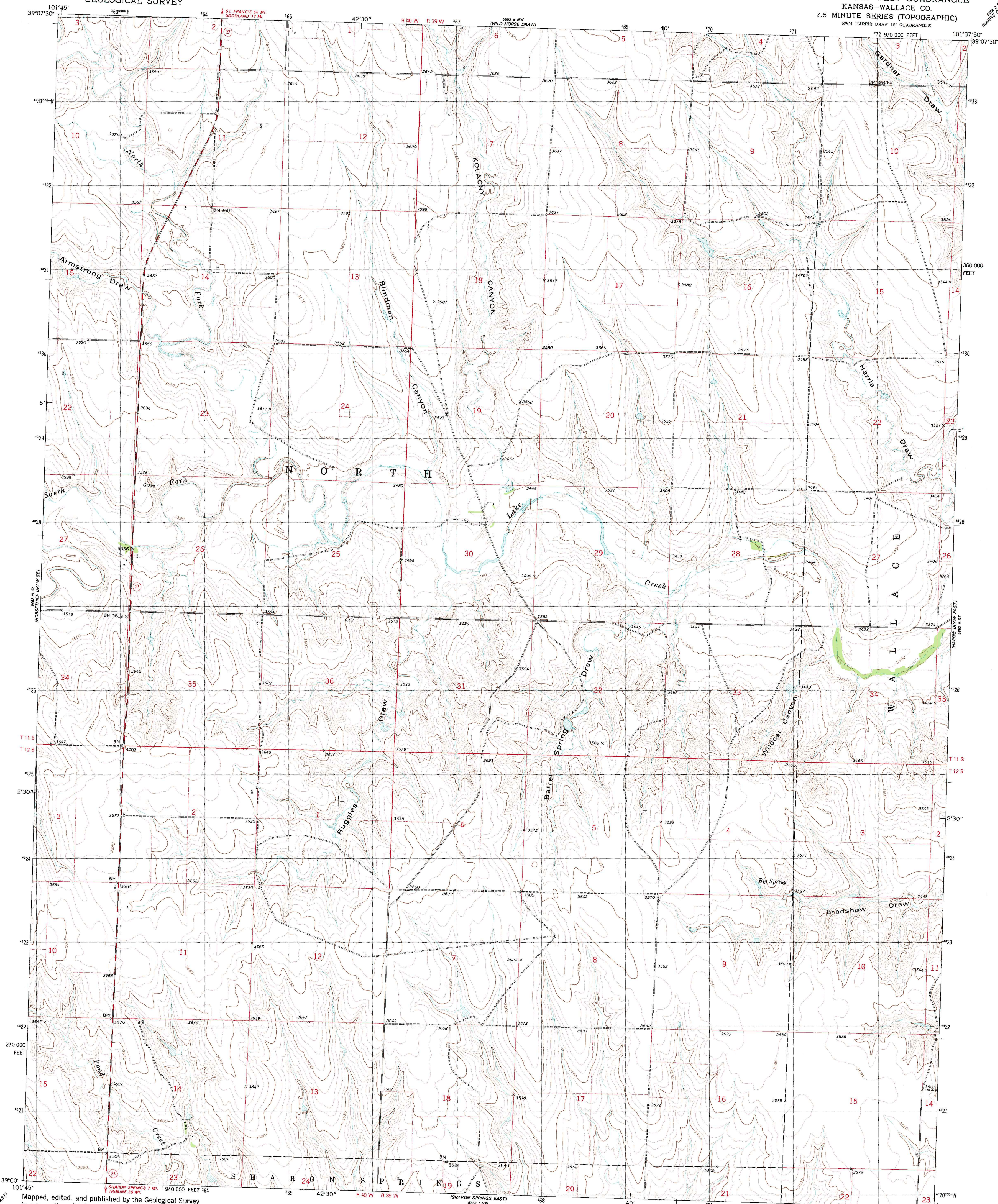
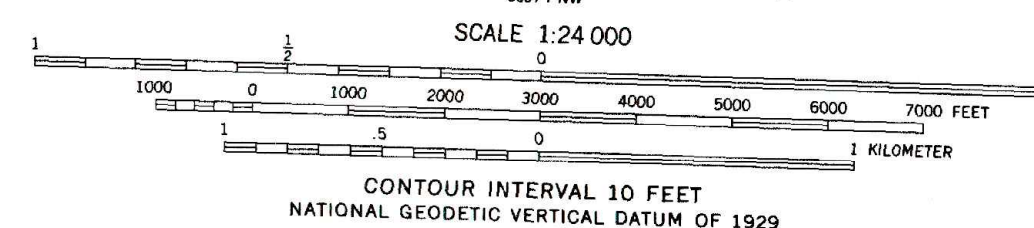
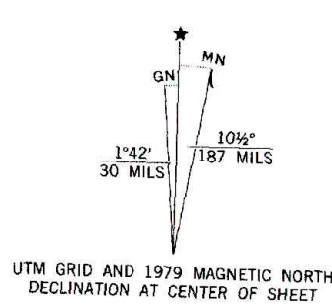


UNITED STATES
DEPARTMENT OF THE INTERIOR
GEOLOGICAL SURVEY

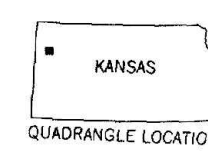
HARRIS DRAW WEST QUADRANGLE
KANSAS—WALLACE CO.
7.5 MINUTE SERIES (TOPOGRAPHIC)
SW/4 HARRIS DRAW 15' QUADRANGLE



Maped, edited, and published by the Geological Survey
in cooperation with State of Kansas agencies
Control by USGS and NOS/NOAA
Topography by photogrammetric methods from aerial photographs
taken 1957. Revised from aerial photographs taken 1977
Field checked 1978. Map edited 1979
Projection and 10,000-foot grid ticks: Kansas coordinate
system, north zone (Lambert conformal conic)
1000-meter Universal Transverse Mercator grid, zone 14
1927 North American datum
To place on the predicted North American Datum 1983
move the projection lines 3 meters north and
39 meters east as shown by dashed corner ticks
Fine red dashed lines indicate selected fence and field lines where
generally visible on aerial photographs. This information is unchecked



THIS MAP COMPLIES WITH NATIONAL MAP ACCURACY STANDARDS
FOR SALE BY U. S. GEOLOGICAL SURVEY, DENVER, COLORADO 80225, OR RESTON, VIRGINIA 22092
AND STATE GEOLOGICAL SURVEY, LAWRENCE, KANSAS 66044
A FOLDER DESCRIBING TOPOGRAPHIC MAPS AND SYMBOLS IS AVAILABLE ON REQUEST



ROAD CLASSIFICATION
Primary highway,
hard surface
Secondary highway,
hard surface
Unimproved road
Interstate Route
U. S. Route
State Route

HARRIS DRAW WEST, KANS.
SW/4 HARRIS DRAW 15' QUADRANGLE
N3900-W10137.5/7.5

1979
DMA 5662 II SW-SERIES V878