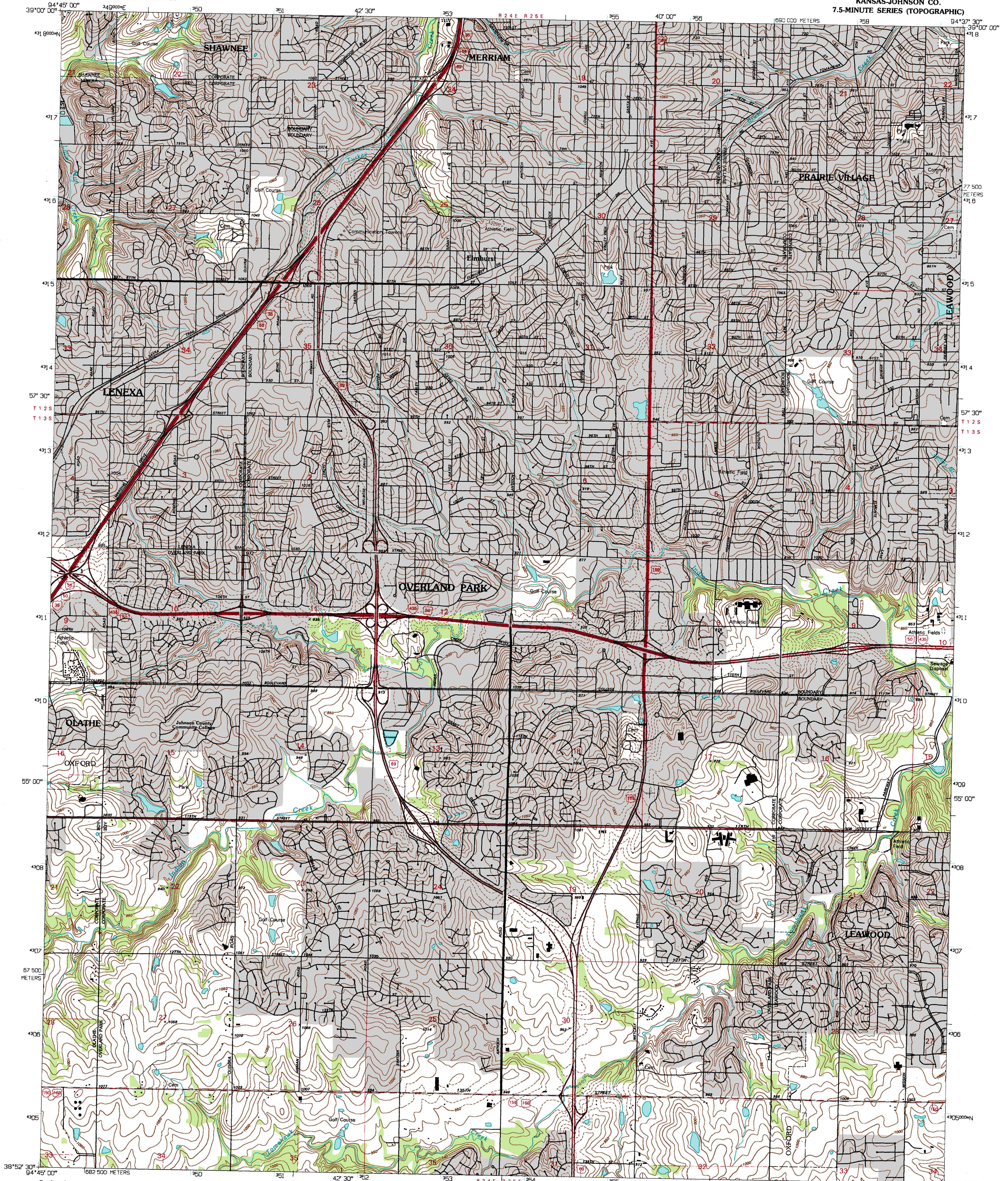
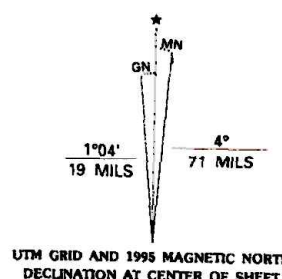


UNITED STATES
DEPARTMENT OF THE INTERIOR
GEOLOGICAL SURVEY

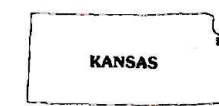
LENEXA QUADRANGLE
KANSAS-JOHNSON CO.
7.5-MINUTE SERIES (TOPOGRAPHIC)



Produced by the United States Geological Survey
Planimetry by photogrammetric methods from imagery dated 1955
Topography by planimetric surveys 1955. Revised from imagery dated 1963. Field checked 1963. Revised from imagery dated 1991. PLS and survey control current as of 1963 (north zone)
Map edited 1995. Contours not revised. Contours that conflict with revised planimetry are dashed
North American Datum of 1983 (NAD 83). Projection and blue 1000-meter ticks: Universal Transverse Mercator, zone 15
2 500-meter ticks: Kansas Coordinate System of 1983 (north zone)
North American Datum of 1927 (NAD 27) is shown by dashed corner ticks. The values of the shift between NAD 83 and NAD 27 for 7.5-minute intersections are obtainable from National Geodetic Survey NADCON software



CONTOUR INTERVAL 10 FEET
NATIONAL GEODETIC VERTICAL DATUM OF 1929



QUADRANGLE LOCATION

1	2	3	1 Edwardsville
4	5	6	2 Shawnee
7	8	9	3 Kansas City
			4 Olathe
			5 Grandview
			6 Olathe
			7 Shawnee
			8 Belton

ADJOINING 7.5' QUADRANGLE NAMES

ROAD CLASSIFICATION
Primary highway
hard surface
Secondary highway
hard surface
Light-duty road, hard or
improved surface
Unimproved road
Interstate Route U.S. Route State Route

LENEXA, KS
38094-H6-TF-024
1991

DMA 7061 1 NW-SERIES V878

FOR SALE BY U.S. GEOLOGICAL SURVEY, DENVER, COLORADO 80225, OR RESTON, VIRGINIA 22092
AND KANSAS GEOLOGICAL SURVEY, LAWRENCE, KANSAS 66044
A FOLDER DESCRIBING TOPOGRAPHIC MAPS AND SYMBOLS IS AVAILABLE ON REQUEST

