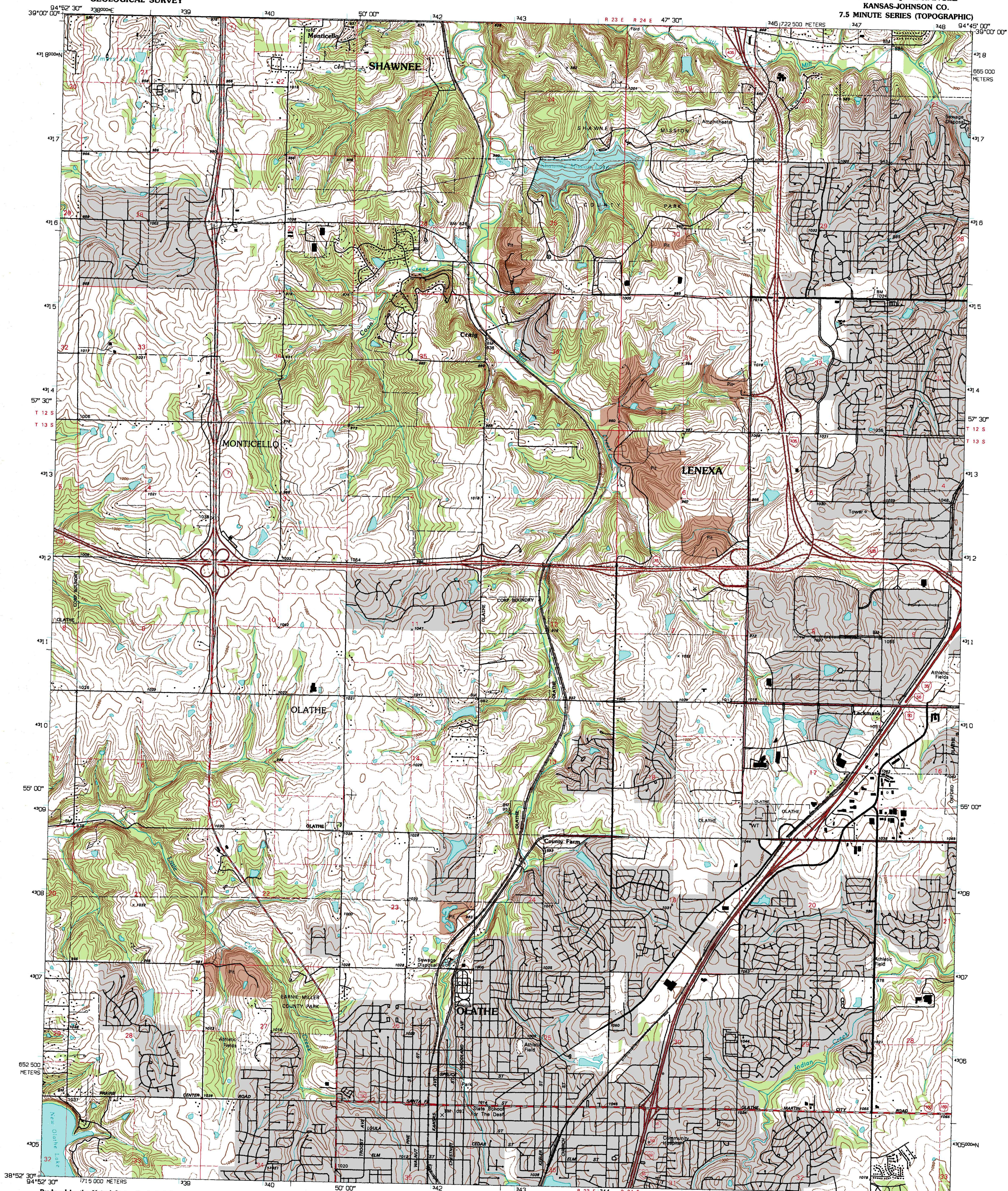


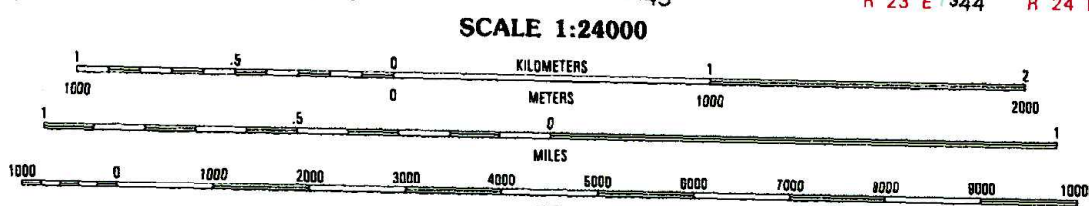
UNITED STATES
DEPARTMENT OF THE INTERIOR
GEOLOGICAL SURVEY

OLATHE QUADRANGLE
KANSAS-JOHNSON CO.
7.5 MINUTE SERIES (TOPOGRAPHIC)

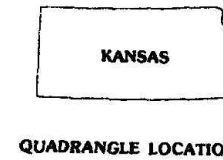


Produced by the United States Geological Survey
Compiled by planimetric surveys 1955. Revised from imagery
dated 1955. Field checked 1956. Revised from imagery dated
1991. PLSS and survey control current as of 1956.
Map edited 1995. Contours not revised. Contours that
conflict with revised planimetry are dashed.
North American Datum of 1983 (NAD 83). Projection and
blue 1000-meter ticks: Universal Transverse Mercator, zone 15
2 500-meter ticks: Kansas Coordinate System of 1985 (north zone)
North American Datum of 1927 (NAD 27) is shown by dashed
corner ticks. The values of the shift between NAD 83 and NAD 27
for 7.5-minute intersections are obtainable from National Geodetic
Survey NADCON software

UTM GRID AND 1985 MAGNETIC NORTH
DECLINATION AT CENTER OF SHEET



CONTOUR INTERVAL 10 FEET
NATIONAL GEODETIC VERTICAL DATUM OF 1929



QUADRANGLE LOCATION

ROAD CLASSIFICATION
Primary highway
hard surface
Secondary highway
hard surface
Light-duty road, hard or
improved surface
Unimproved road
Interstate Route
U.S. Route
State Route

1	2	3
4	5	6
7	8	9

ADJOINING 7.5 QUADRANGLE NAMES

OLATHE, KS
38094-H7-TF-024
1991

DMA 7601 IV N2-SERIES V878



FOR SALE BY U.S. GEOLOGICAL SURVEY, DENVER, COLORADO 80225, OR RESTON, VIRGINIA 22092
AND KANSAS GEOLOGICAL SURVEY, LAWRENCE, KANSAS 66044
A FOLDER DESCRIBING TOPOGRAPHIC MAPS AND SYMBOLS IS AVAILABLE ON REQUEST