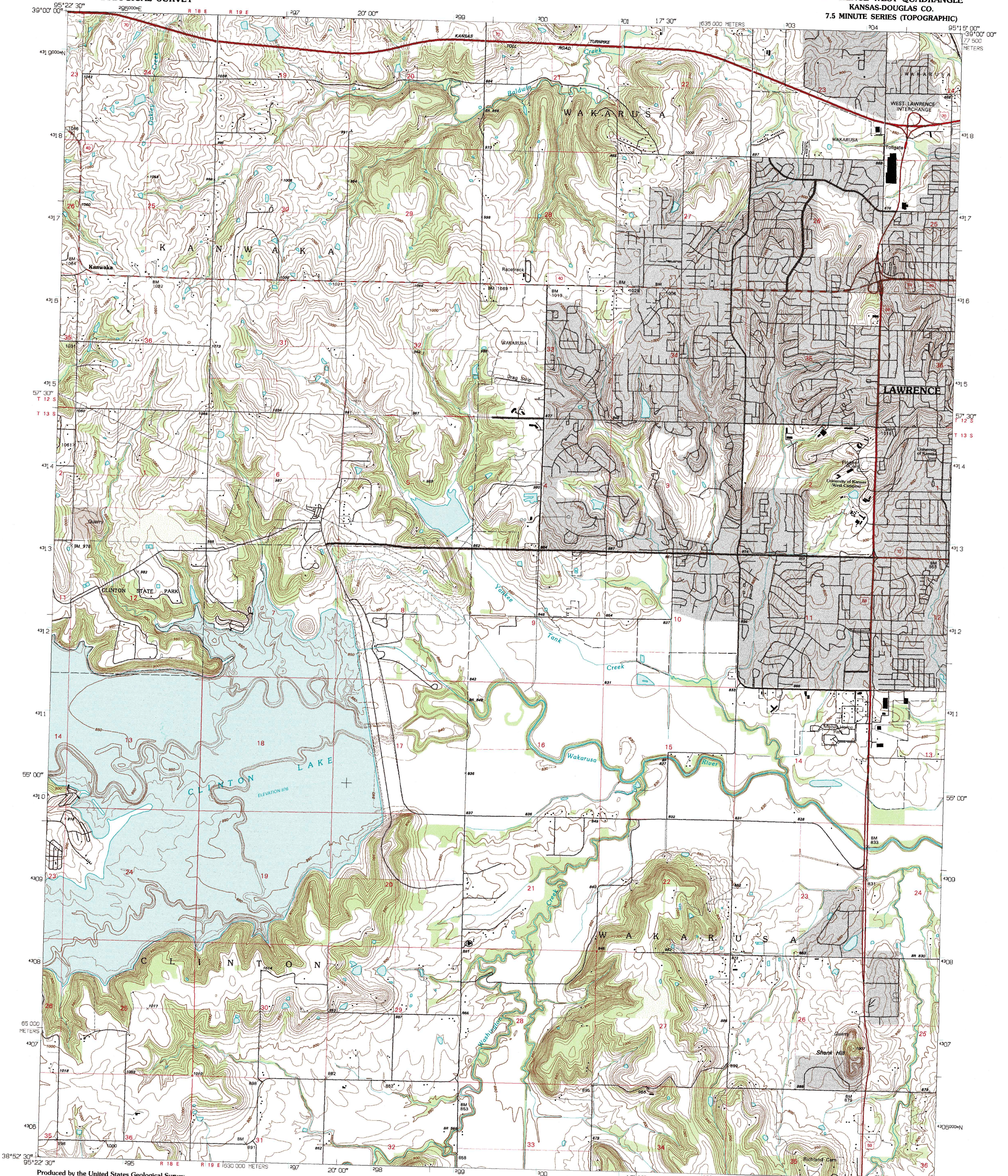


UNITED STATES  
DEPARTMENT OF THE INTERIOR  
GEOLOGICAL SURVEY

LAWRENCE WEST QUADRANGLE  
KANSAS-DOUGLAS CO.  
7.5 MINUTE SERIES (TOPOGRAPHIC)



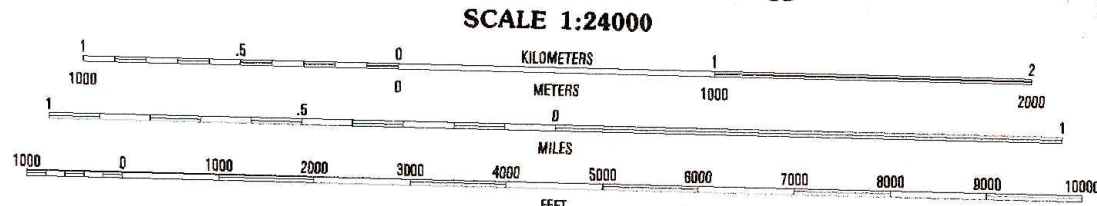
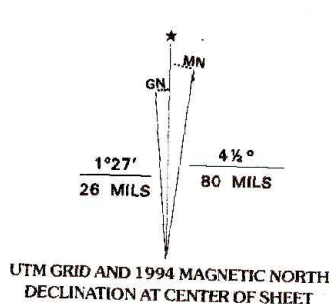
Produced by the United States Geological Survey

Compiled by photogrammetric methods from imagery dated 1948  
Field checked 1950. Revised from imagery dated 1991  
PLSS and survey control current as of 1950. Map edited 1994  
Contours not revised. Contours that conflict with  
revised planimetry are dashed.

North American Datum of 1983 (NAD 83). Projection and  
blue 1000-meter ticks: Universal Transverse Mercator, zone 15  
2 500-meter ticks: Kansas Coordinate System of 1983 (north zone)

North American Datum of 1927 (NAD 27) is shown by dashed  
corner ticks. The values of the shift between NAD 83 and NAD 27  
for 7.5-minute intersections are obtainable from National Geodetic  
Survey NADCON software

There may be private inholdings within the boundaries of  
the National or State reservations shown on this map



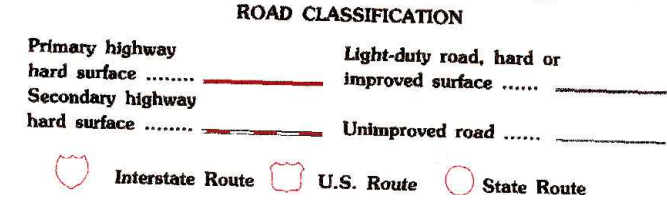
CONTOUR INTERVAL 10 FEET  
NATIONAL GEODETIC VERTICAL DATUM OF 1929



QUADRANGLE LOCATION

1	2	3	1 Perry
			2 Williamstown
			3 Midland
4		5	4 Clinton
			5 Lawrence East
			6 Globe
			7 Lone Star
6	7	8	8 Baldwin City

ADJOINING 7.5' QUADRANGLE NAMES



LAWRENCE WEST, KS  
38095-413-1F-024

1991

DMA 6961 IV NE-SERIES V878