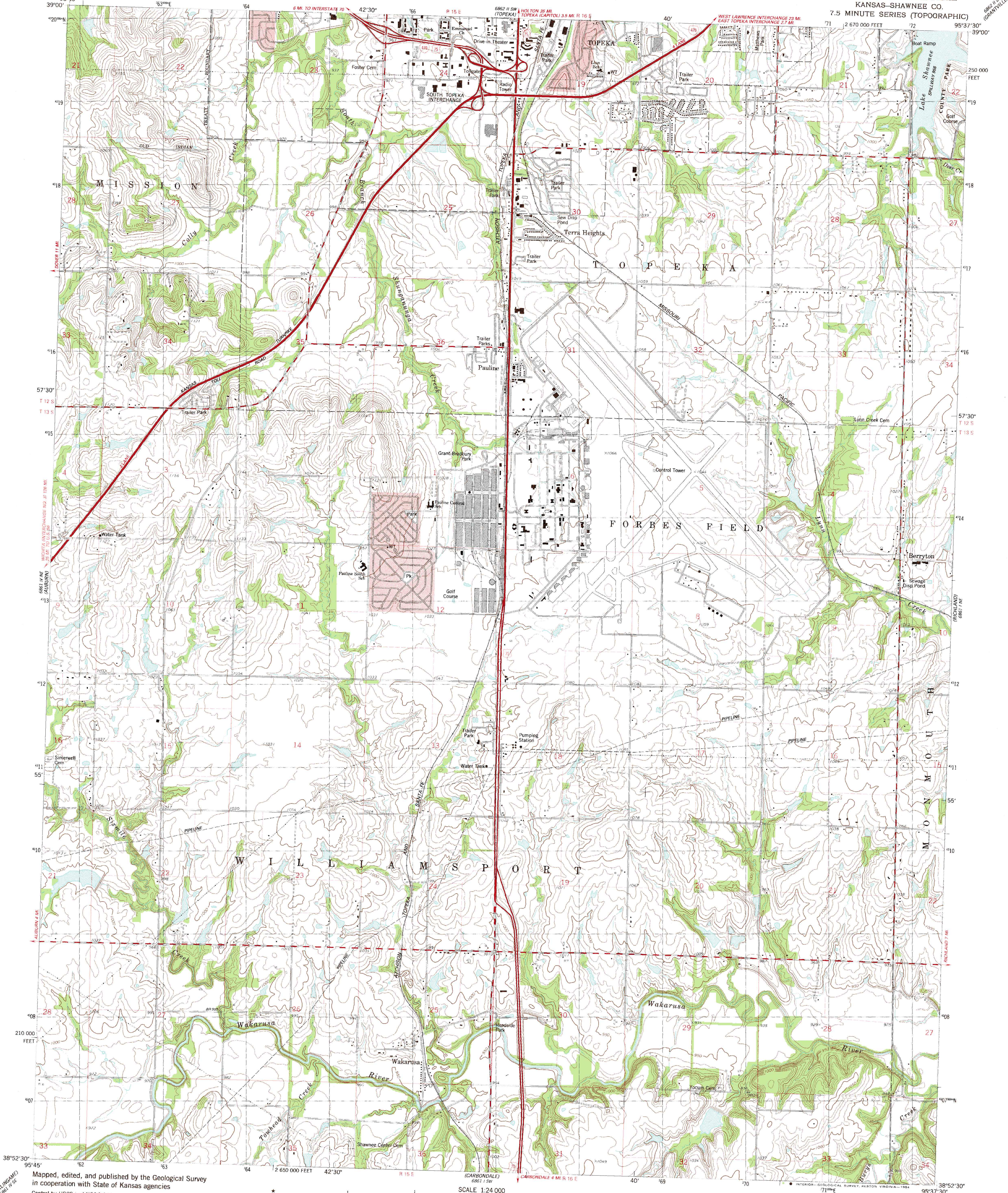


UNITED STATES
DEPARTMENT OF THE INTERIOR
GEOLOGICAL SURVEY

WAKARUSA QUADRANGLE
KANSAS-SHAWNEE CO.
7.5 MINUTE SERIES (TOPOGRAPHIC)

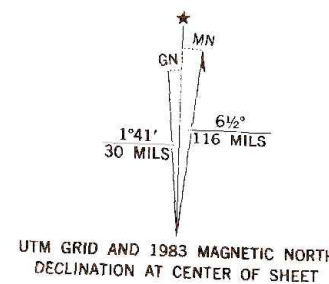


Mapped, edited, and published by the Geological Survey
in cooperation with State of Kansas agencies

Control by USGS and NOS/NOAA
Topography by photogrammetric methods from aerial photographs
taken 1948. Field checked 1954-55. Revised from aerial
photographs taken 1982. Field checked 1983. Map edited 1983

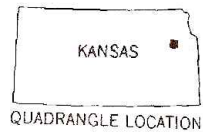
Polyconic projection. 1927 North American Datum
10,000-foot grid based on Kansas coordinate system, north zone
1000-meter Universal Transverse Mercator grid, zone 15
To place on the predicted North American Datum 1983,
move the projection on lines 2 meters north and
23 meters east as shown by dashed corner ticks

Red tint indicates areas in which only landmark buildings are shown
Dotted land lines established by private survey
Fine red dashed lines indicate selected fence and field lines where
generally visible on aerial photographs. This information is unchecked



SCALE 1:24 000
CONTOUR INTERVAL 10 FEET
NATIONAL GEODETIC VERTICAL DATUM OF 1929

THIS MAP COMPLIES WITH NATIONAL MAP ACCURACY STANDARDS
FOR SALE BY U.S. GEOLOGICAL SURVEY, DENVER, COLORADO 80225, OR RESTON, VIRGINIA 22092
AND KANSAS GEOLOGICAL SURVEY, LAWRENCE, KANSAS 66044
A FOLDER DESCRIBING TOPOGRAPHIC MAPS AND SYMBOLS IS AVAILABLE ON REQUEST



ROAD CLASSIFICATION
Primary highway, hard surface
Secondary highway, hard surface
Unimproved road
Interstate Route
U.S. Route
State Route

WAKARUSA, KANS.
38095-H6-TF-024

1983
DMA 6861 / 1 NW-SERIES V875